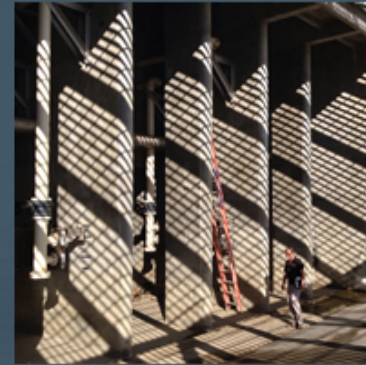
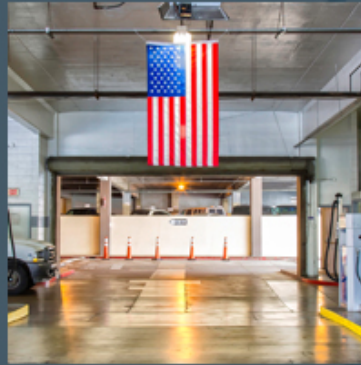


Housing Element Community Workshop



February 16, 2021

Introductions

- Richard Vuong, Planning Division Manager
- Joanna Chang, Land Use Manager
- Steven Giang, Associate Planner
- Dave Barquist, Principal at Kimley-Horn
- Nick Chen, Community Planner at Kimley-Horn
- Molly Mendoza, Planning Analyst at Kimley-Horn



Kimley»Horn



Guide for a Productive Workshop

Thank you for joining us!

- There will be time for verbal questions at the end of each agenda item. Please use the “raise hand” function and your name will be called during these times.
- After the presentation, there will be time for discussion. For written comments, please use the “Question and Answer” function.
- Please participate – your input is important!



Today's Agenda

- County of Orange Profile
- Overview of the Housing Element
- Regional Housing Needs Assessment (RHNA)
- Policies and Strategies
- Community Participation
- Next Steps





County of Orange Profile



Unincorporated Orange County Areas (Sample)



Canyons



North Tustin



Midway City

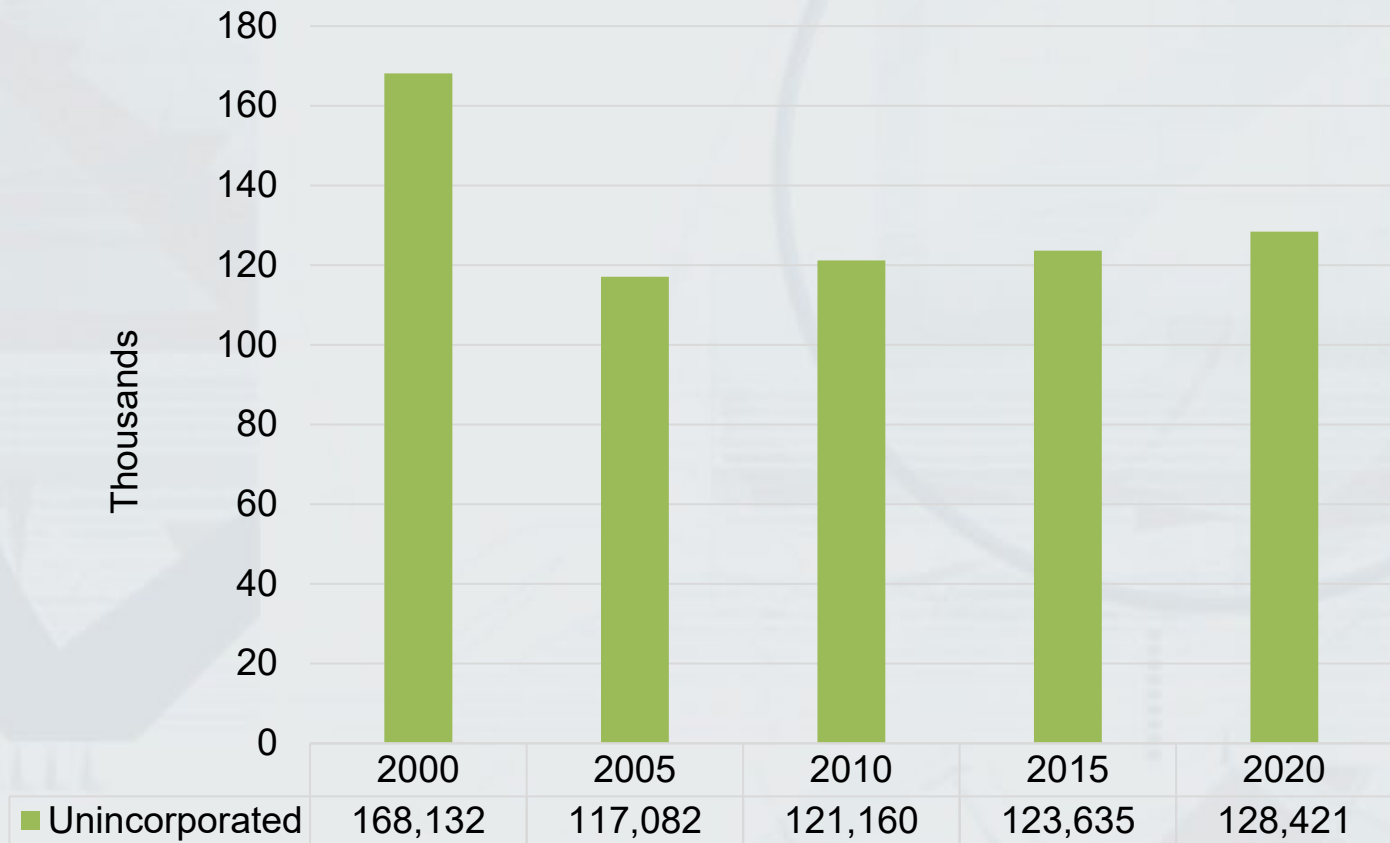


Rancho Mission Viejo



Population

→ 2000-2020 Population – Unincorporated Orange County



Housing Type

→ Housing by Type – Unincorporated OC

Single-Family Detached

75.2%

Single-Family Attached

11.0%

Multi-Family

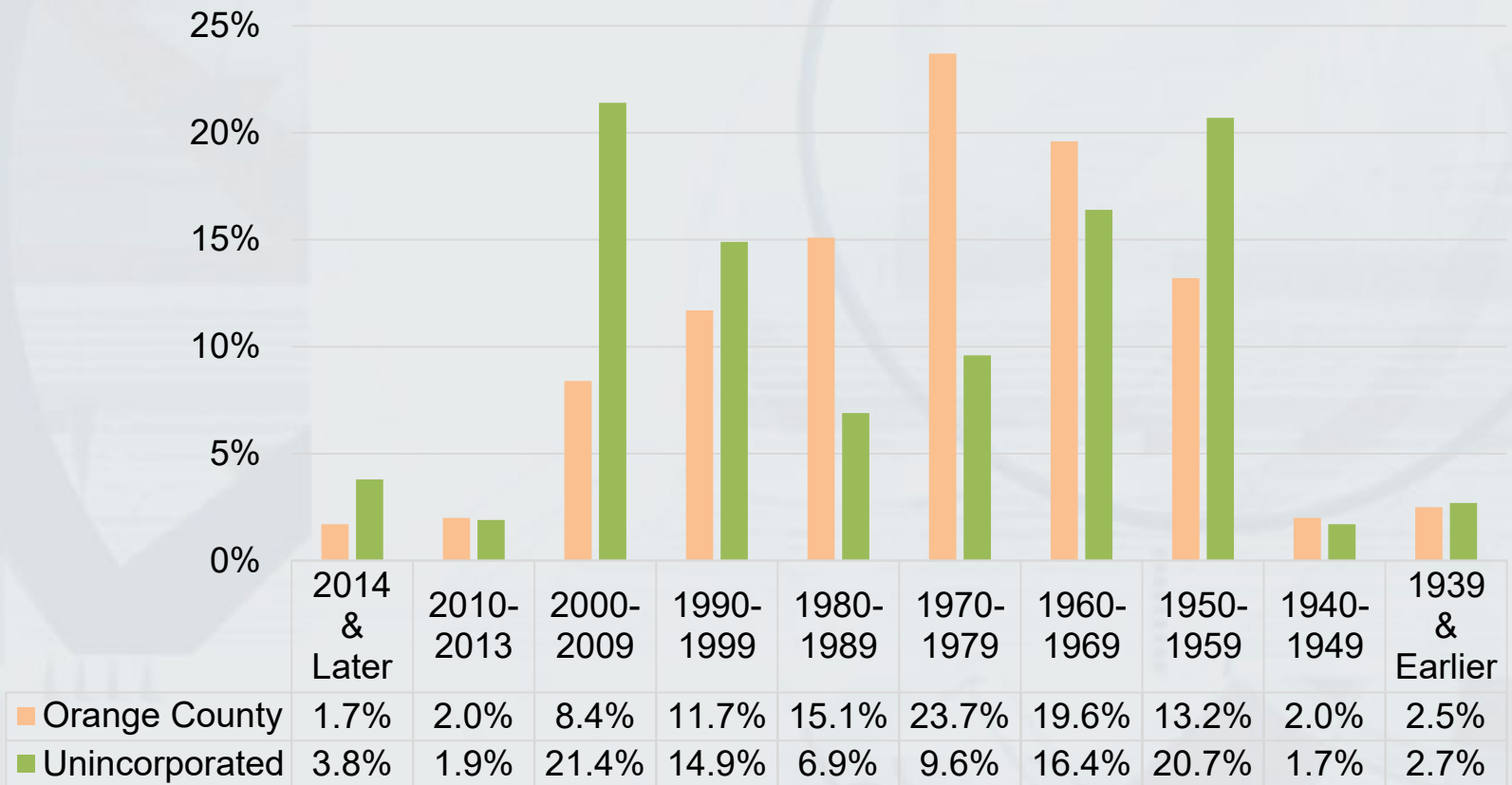
12.3%

Mobile Homes



Housing Stock

→ Breakdown of Housing Stock – Year Built





Overview of a Housing Element

What is a Housing Element?



Required Chapter of the County's General Plan



Identifies projected housing needs by income category



Provides goals, policies, programs, and quantified objectives to guide current need and future housing growth for all income levels



Requires certification by the Department of Housing and Community Development (HCD) for compliance with state laws

Why are Housing Elements Updated?

- Engages the community in the planning process
- Demonstrates the County's ability to meet current and future housing growth need
- Establishes a plan for meeting the housing needs of all income levels
- Ensures the Housing Element is compliant with state housing laws



Housing Element Certification

What is a
“Certified”
Housing
Element?

- Reviewed and certified by the Department of Housing and Community Development (HCD)
- Demonstrates compliance with state law

Benefits of
Certification

- Access to state grants and alternative funding sources
- Prevents County from penalties



Housing Element Features

- Population and housing profile
- Evaluation of constraints to housing
- Analysis and identification of sites to accommodate the County's RHNA allocation
- Evaluation of current programs and policies
- Policies, programs, and quantified objectives to achieve the County's identified housing goals





Regional Housing Needs Assessment

What is RHNA?



Statewide determination of units is split into regional allocations



Initiates the Housing Element Update process



Quantifies housing needs, by income category, within each County and City in California



Based on future growth in population, employment and households



6th Cycle (2021-2029) RHNA

**Department of
Housing and
Community
Development**

*HCD
determines and
distributes the
State's housing
need to all the
regional
councils of
government*



**Southern
California
Association of
Governments**

*SCAG develops
methodology to
determine
“fair share”
distribution of
the region's
housing need to
local
jurisdictions*



**Orange
County
Final RHNA
Allocation,
2021-2029**

10,406 units



6th Cycle (2021-2029) RHNA



RHNA Income Categories

Income Category	% of Area Median Income (AMI)	Income Range*		Draft RHNA Allocation (Housing Units)
		Minimum	Maximum	
Very Low Income	0 – 50%	--	\$51,500	3,139 units
Low Income	51 – 80%	\$52,530	\$82,400	1,866 units
Moderate Income	81 – 120%	\$83,430	\$133,900	2,040 units
Above Moderate Income	>120%	\$133,900	--	3,361 units
TOTAL:				10,406 units

* 2020 County of Orange Area Median Income (AMI) for a 4-person household is \$103,000





Policies and Strategies

Current Policies and Strategies



Affordable Housing



Accessory Dwelling Units



Housing Opportunities Overlay



Mixed Use Overlay



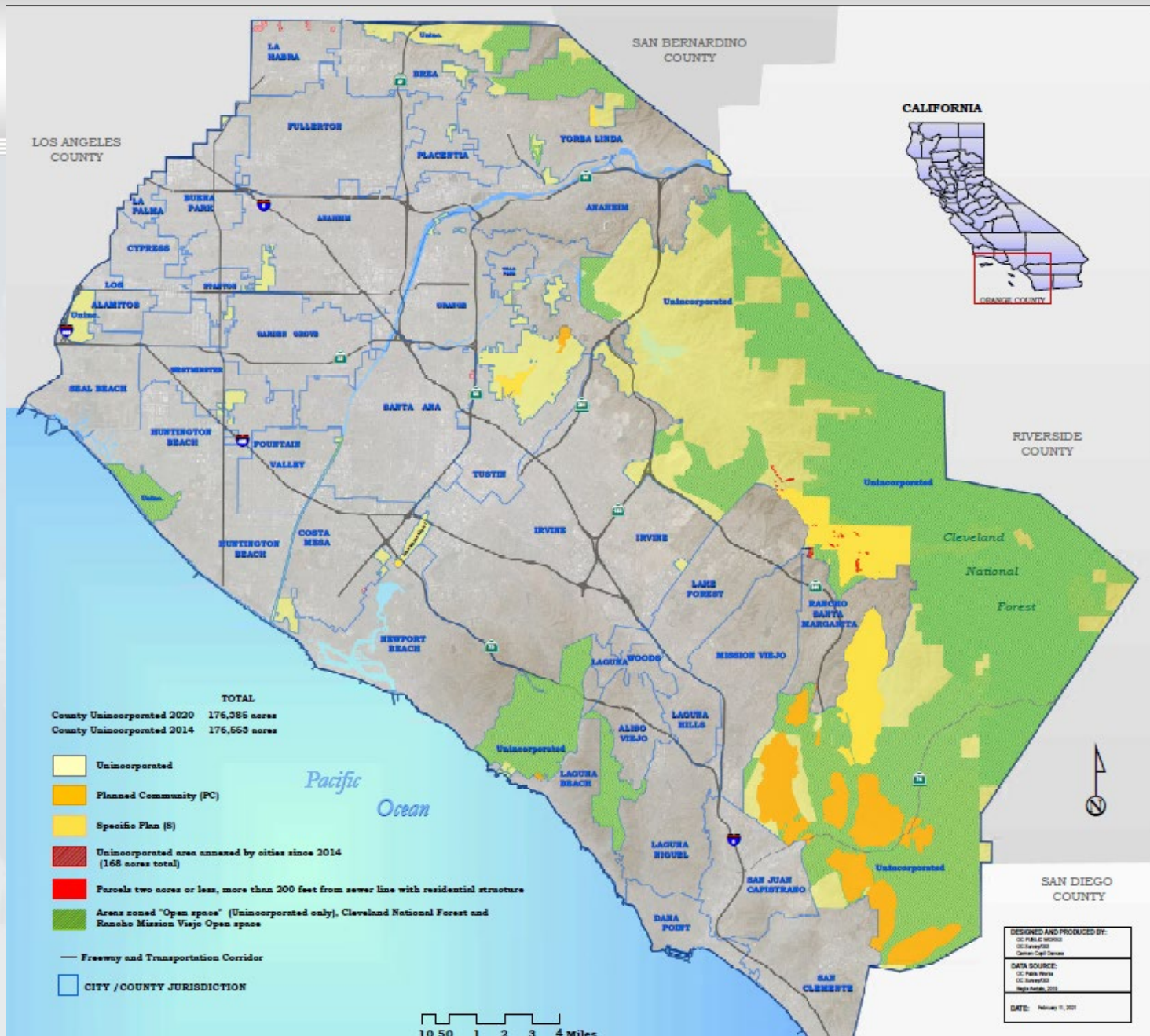


We Want Your Input!

Opportunity Areas for Housing

- The next slide provides a map of the County
- The following areas can accommodate growth
 - Orange
 - Dark Yellow
 - Light Yellow
- Of these areas, where are you interested in seeing housing?





Polling Exercise



Please take out your cell
phone and go to:
www.Menti.com



Enter the code:
94 39 28 3

Discussion

**Do you have any comments
or questions about the
Housing Element Update?**





Next Steps

Housing Element Community Survey

- We want your input!
- The County developed a housing survey to gather additional feedback.
- Visit the Housing Element Update Webpage:
- bit.ly/ocheupdate



The screenshot shows the OC Public Works website. At the top is the OCgov.com logo and a navigation bar with links for OCPW, SERVICE AREAS, HOW DO I?, NEWS, MYOCESERVICES, and CONTACT. Below the navigation bar is a breadcrumb trail: Home / Development / + Current Projects / All Districts Projects / Housing Element Update 2021-2029. The main header features an aerial view of a residential development with the text "OC DEVELOPMENT SERVICES" overlaid. The page title is "OC HOUSING ELEMENT COUNTY OF ORANGE HOUSING ELEMENT UPDATE 2021-2029". A sidebar on the left contains the following text: "Housing Element Update 2021-2029", "Orange County Affordable Housing Implementation Program - Ranch Plan", and "Archived All Districts Projects". The main content area begins with a paragraph stating: "State law requires jurisdictions to adopt and periodically update a General Plan. The Housing Element is one of the required elements of the County of Orange General Plan and is statutorily required to be updated every 8 years." This is followed by another paragraph: "The County of Orange is currently updating the Housing Element for the 6th cycle, which covers the planning period from 2021-2029. The Housing Element serves as a policy guide to address the comprehensive housing needs of unincorporated areas within Orange County. The primary focus of the Housing Element is to ensure decent, safe, and sanitary housing for current and future residents of the unincorporated areas."



Housing Element Community Survey

- ➔ Scroll to “Online Community Survey”
- ➔ Click on the link with the language you would like to take the survey in. (Shown below)

6th Cycle Housing Element Survey Form




Welcome! The County of Orange is currently updating the Housing Element for the 6th cycle, which covers the planning period from 2021-2029. The Housing Element serves as a policy guide to address the comprehensive housing needs of the unincorporated areas within Orange County. The primary focus of the Housing Element is to ensure that the County has planned to meet the housing needs of current and future residents of all income levels within the unincorporated areas.

If you live and/or work in unincorporated Orange County, please complete the following survey to provide us with a better understanding of the community's housing needs and priorities.

Please limit one survey per person. This online survey will close on Monday, March 1, 2021 at 5:00 p.m.

Please remember to visit the following link for more details on the County of Orange Housing Element Update: <https://ocds.ocpublicworks.com/service-areas/oc-development-services/planning-development/current-projects/all-districts-2>.

Online Community Survey

- Please also consider taking our survey so that we may better understand your housing needs and concerns by clicking this  [Link \(English\)](#),  [Link \(Spanish\)](#),  [Link \(Vietnamese\)](#). This online survey will close on Monday, March 1, 2021, at 5:00 p.m.



Thank you!

Thank you for participating!

→ Remember to take the survey online:

- bit.ly/OCHESurvey

→ Visit the County's Housing Element Update page for any additional details:

- <http://bit.ly/ocheupdate>

→ For any follow up questions please email:

- OChousing@ocpw.ocgov.com

