

UNIT 3

UNIT 2R

UNIT 1R

UNIT 1

UNIT 2

UNIT 3X-ACCESSIBLE

UNIT 1

3 BEDROOMS / 3.5 BATHS / DECK
2 - CAR GARAGE

FLOOR AREA TABLE

1ST FLOOR	320 SQ. FT.
2ND FLOOR	728 SQ. FT.
3RD FLOOR	623 SQ. FT.
TOTAL	1,671 SQ. FT.
2 - CAR GARAGE	454 SQ. FT.
PORCH	69 SQ. FT.
DECK	72 SQ. FT.

NOTE: SQUARE FOOTAGE MAY VARY DUE TO METHOD OF CALCULATION

UNIT 2

3 BEDROOMS / 3.5 BATHS + BONUS ROOM / DECK
2 - CAR GARAGE

FLOOR AREA TABLE

1ST FLOOR	337 SQ. FT.
2ND FLOOR	741 SQ. FT.
3RD FLOOR	767 SQ. FT.
TOTAL	1,845 SQ. FT.
2 - CAR GARAGE	454 SQ. FT.
PORCH	53 SQ. FT.
DECK	75 SQ. FT.

NOTE: SQUARE FOOTAGE MAY VARY DUE TO METHOD OF CALCULATION

UNIT 3

3 BEDROOMS / 3.5 BATHS / DECK
2 - CAR GARAGE

FLOOR AREA TABLE

1ST FLOOR	342 SQ. FT.
2ND FLOOR	788 SQ. FT.
3RD FLOOR	815 SQ. FT.
TOTAL	1,945 SQ. FT.
2 - CAR GARAGE	455 SQ. FT.
PORCH	84 SQ. FT.
DECK	83 SQ. FT.

NOTE: SQUARE FOOTAGE MAY VARY DUE TO METHOD OF CALCULATION

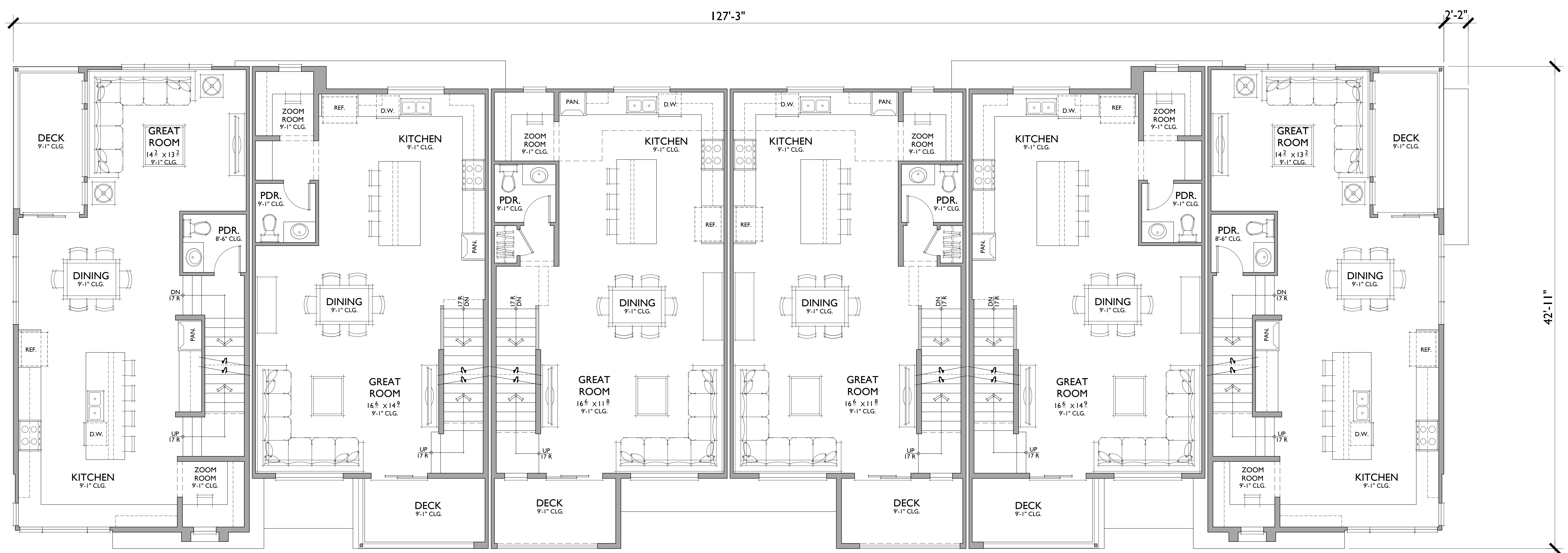
UNIT 3X - ACC.

3 BEDROOMS / 2 BATHS / 2 PDR. / DECK
2 - CAR GARAGE

FLOOR AREA TABLE

1ST FLOOR	356 SQ. FT.
2ND FLOOR	788 SQ. FT.
3RD FLOOR	815 SQ. FT.
TOTAL	1,959 SQ. FT.
2 - CAR GARAGE	455 SQ. FT.
PORCH	69 SQ. FT.
DECK	83 SQ. FT.

NOTE: SQUARE FOOTAGE MAY VARY DUE TO METHOD OF CALCULATION



UNIT 3

UNIT 2R

UNIT 1R

UNIT 1

UNIT 2

UNIT 3X-ACCESSIBLE

UNIT 1

3 BEDROOMS / 3.5 BATHS / DECK
2 - CAR GARAGE

FLOOR AREA TABLE	
1ST FLOOR	320 SQ. FT.
2ND FLOOR	728 SQ. FT.
3RD FLOOR	623 SQ. FT.
TOTAL	1,671 SQ. FT.
2 - CAR GARAGE	454 SQ. FT.
PORCH	69 SQ. FT.
DECK	72 SQ. FT.

NOTE: SQUARE FOOTAGE MAY VARY DUE TO METHOD OF CALCULATION

UNIT 2

3 BEDROOMS / 3.5 BATHS + BONUS ROOM / DECK
2 - CAR GARAGE

FLOOR AREA TABLE	
1ST FLOOR	337 SQ. FT.
2ND FLOOR	741 SQ. FT.
3RD FLOOR	767 SQ. FT.
TOTAL	1,845 SQ. FT.
2 - CAR GARAGE	454 SQ. FT.
PORCH	53 SQ. FT.
DECK	75 SQ. FT.

NOTE: SQUARE FOOTAGE MAY VARY DUE TO METHOD OF CALCULATION

UNIT 3

3 BEDROOMS / 3.5 BATHS / DECK
2 - CAR GARAGE

FLOOR AREA TABLE	
1ST FLOOR	342 SQ. FT.
2ND FLOOR	788 SQ. FT.
3RD FLOOR	815 SQ. FT.
TOTAL	1,945 SQ. FT.
2 - CAR GARAGE	455 SQ. FT.
PORCH	84 SQ. FT.
DECK	83 SQ. FT.

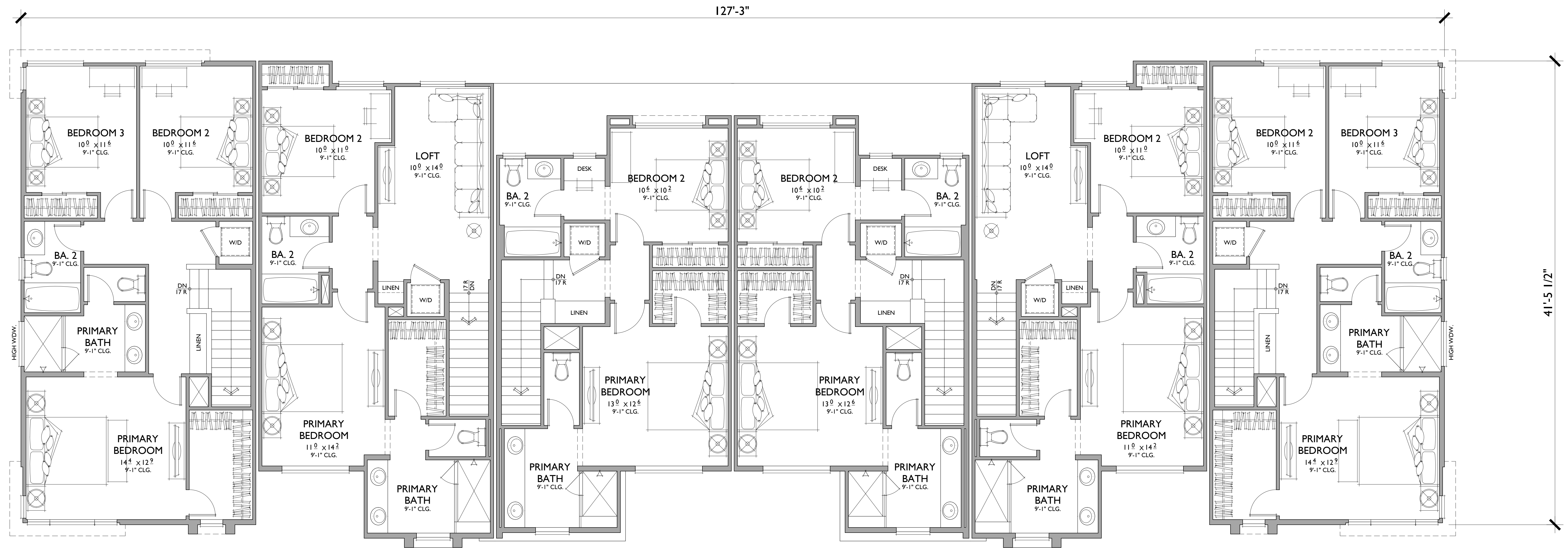
NOTE: SQUARE FOOTAGE MAY VARY DUE TO METHOD OF CALCULATION

UNIT 3X - ACC.

3 BEDROOMS / 2 BATHS / 2 PDR. / DECK
2 - CAR GARAGE

FLOOR AREA TABLE	
1ST FLOOR	356 SQ. FT.
2ND FLOOR	788 SQ. FT.
3RD FLOOR	815 SQ. FT.
TOTAL	1,959 SQ. FT.
2 - CAR GARAGE	455 SQ. FT.
PORCH	69 SQ. FT.
DECK	83 SQ. FT.

NOTE: SQUARE FOOTAGE MAY VARY DUE TO METHOD OF CALCULATION



UNIT 3

UNIT 2R

UNIT 1R

UNIT 1

UNIT 2

UNIT 3X-ACCESSIBLE

UNIT 1

3 BEDROOMS / 3.5 BATHS / DECK
2 - CAR GARAGE

FLOOR AREA TABLE	
1ST FLOOR	320 SQ. FT.
2ND FLOOR	728 SQ. FT.
3RD FLOOR	623 SQ. FT.
TOTAL	1,671 SQ. FT.
2 - CAR GARAGE	454 SQ. FT.
PORCH	69 SQ. FT.
DECK	72 SQ. FT.

NOTE: SQUARE FOOTAGE MAY VARY DUE TO METHOD OF CALCULATION

UNIT 2

3 BEDROOMS / 3.5 BATHS + BONUS ROOM / DECK
2 - CAR GARAGE

FLOOR AREA TABLE	
1ST FLOOR	337 SQ. FT.
2ND FLOOR	741 SQ. FT.
3RD FLOOR	767 SQ. FT.
TOTAL	1,845 SQ. FT.
2 - CAR GARAGE	454 SQ. FT.
PORCH	53 SQ. FT.
DECK	75 SQ. FT.

NOTE: SQUARE FOOTAGE MAY VARY DUE TO METHOD OF CALCULATION

UNIT 3

3 BEDROOMS / 3.5 BATHS / DECK
2 - CAR GARAGE

FLOOR AREA TABLE	
1ST FLOOR	342 SQ. FT.
2ND FLOOR	788 SQ. FT.
3RD FLOOR	815 SQ. FT.
TOTAL	1,945 SQ. FT.
2 - CAR GARAGE	455 SQ. FT.
PORCH	84 SQ. FT.
DECK	83 SQ. FT.

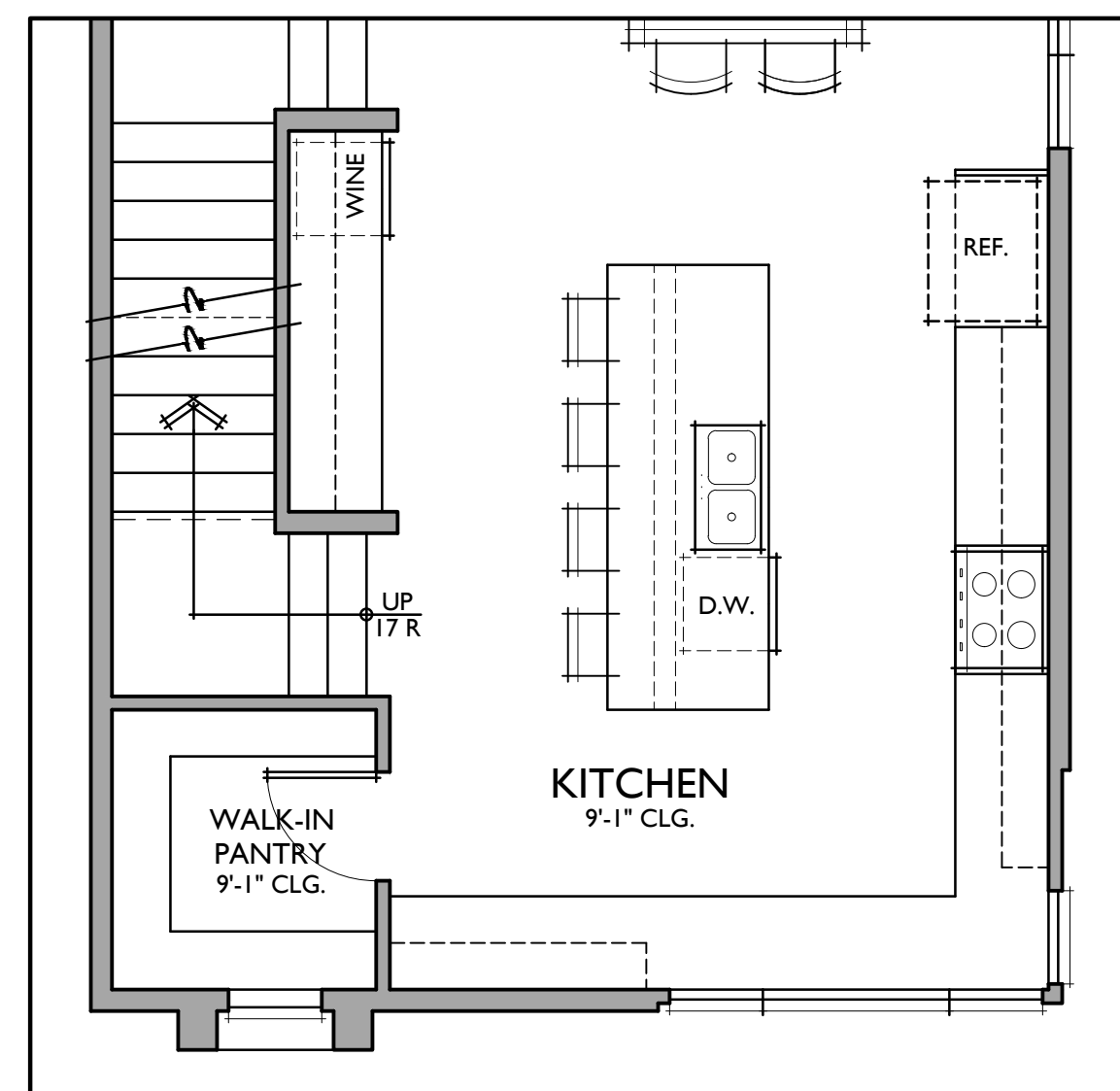
NOTE: SQUARE FOOTAGE MAY VARY DUE TO METHOD OF CALCULATION

UNIT 3X - ACC.

3 BEDROOMS / 2 BATHS / 2 PDR. / DECK
2 - CAR GARAGE

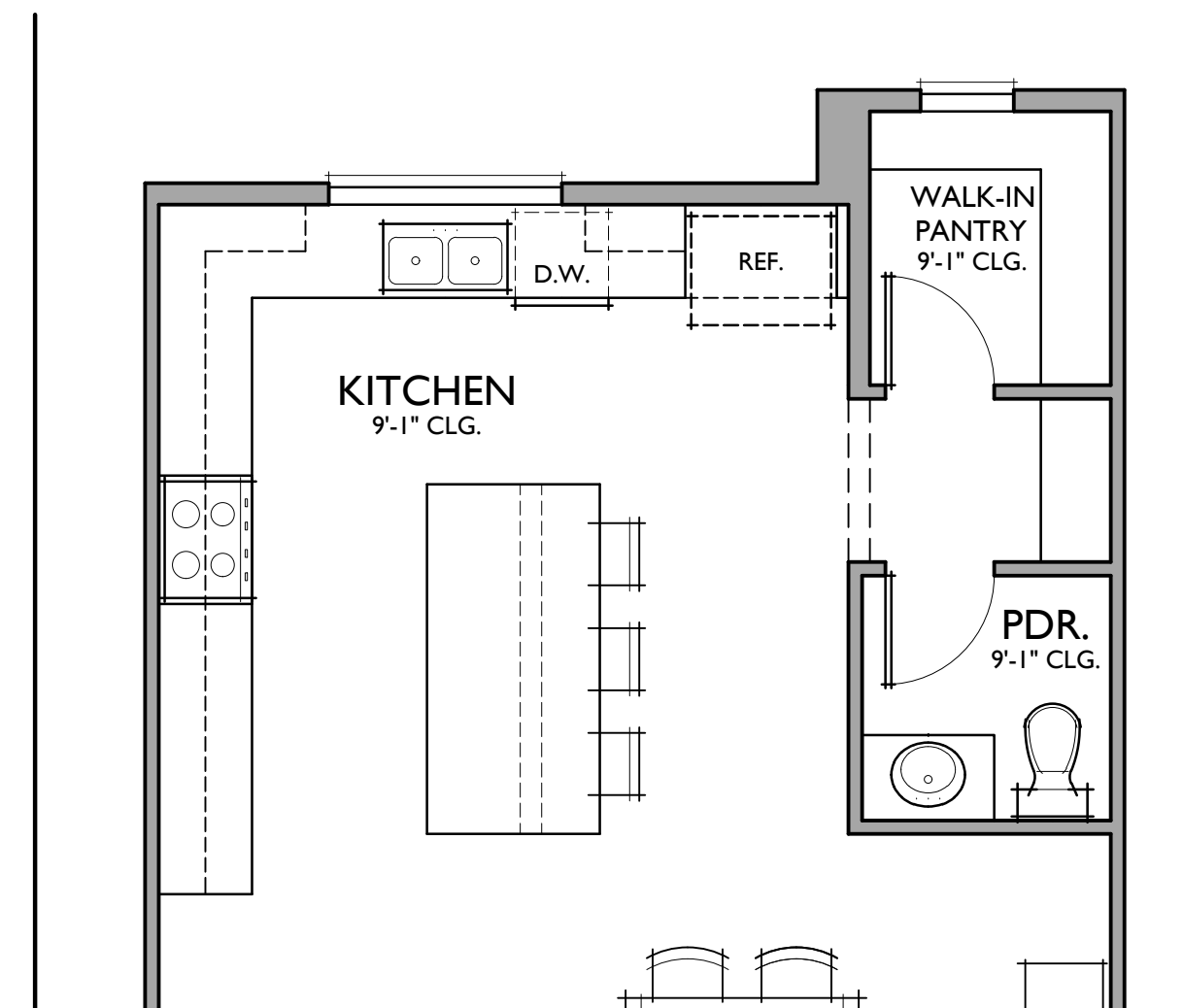
FLOOR AREA TABLE	
1ST FLOOR	356 SQ. FT.
2ND FLOOR	788 SQ. FT.
3RD FLOOR	815 SQ. FT.
TOTAL	1,959 SQ. FT.
2 - CAR GARAGE	455 SQ. FT.
PORCH	69 SQ. FT.
DECK	83 SQ. FT.

NOTE: SQUARE FOOTAGE MAY VARY DUE TO METHOD OF CALCULATION



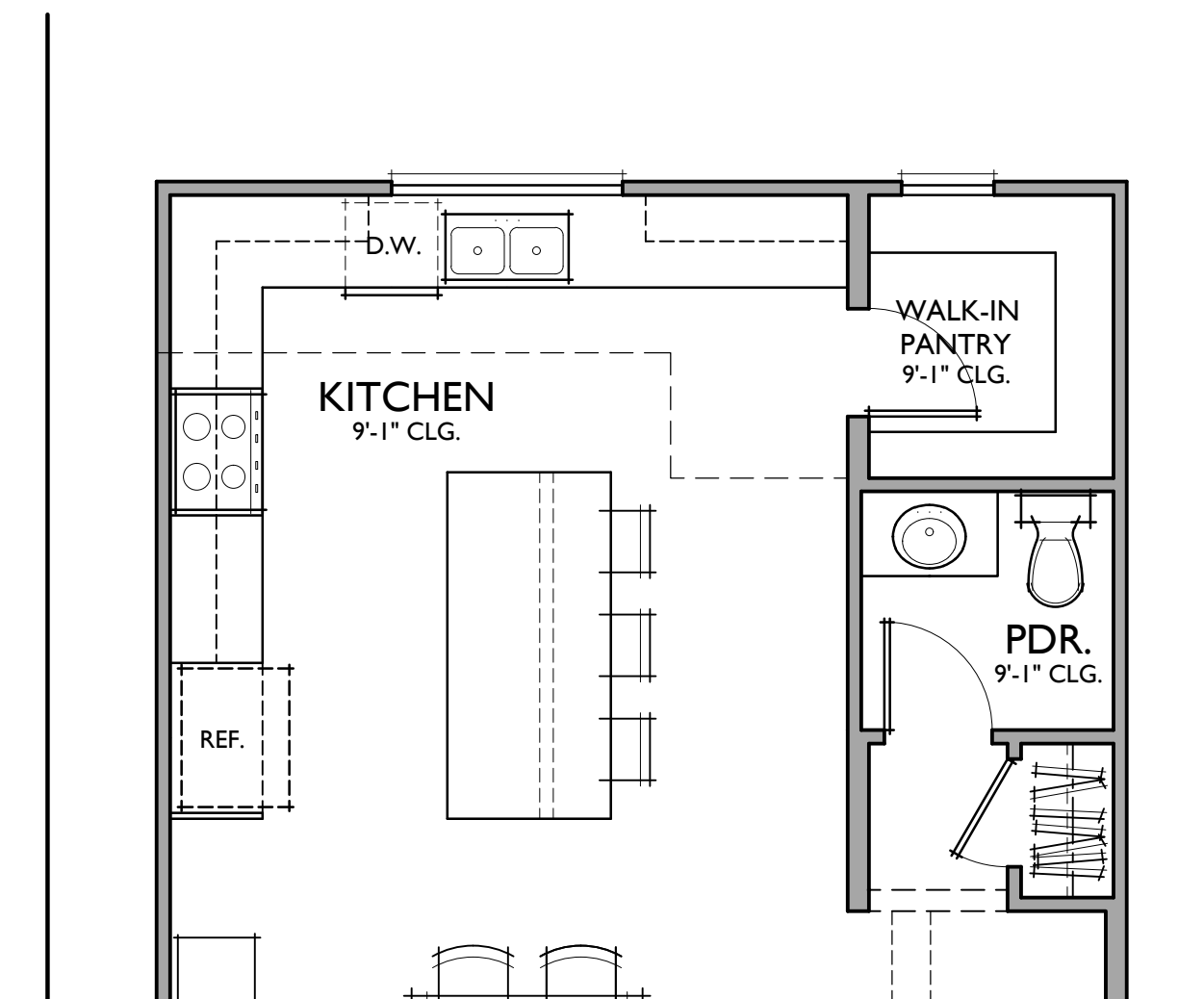
OPTIONAL WALK-IN PANTRY

IN LIEU OF ZOOM ROOM - PLAN 3 / 3X



OPTIONAL WALK-IN PANTRY

IN LIEU OF ZOOM ROOM - PLAN 2 / 2X



OPTIONAL WALK-IN PANTRY

IN LIEU OF ZOOM ROOM - PLAN 1



FRONT

6-PLEX
1/4"=1'-0"

- MATERIAL LEGEND**
- A. COMPOSITION SHINGLE ROOF
 - B. STANDING SEAM METAL ROOF
 - C. STUCCO (COLOR VARIES)
 - D. METAL SECTIONAL GARAGE DOOR
 - E. DECORATIVE LIGHT FIXTURE
 - F. CEMENTITIOUS HORIZONTAL SIDING
 - G. VINYL WINDOW
 - H. STUCCO OVER FOAM TRIM
 - I. CEMENTITIOUS TRIM



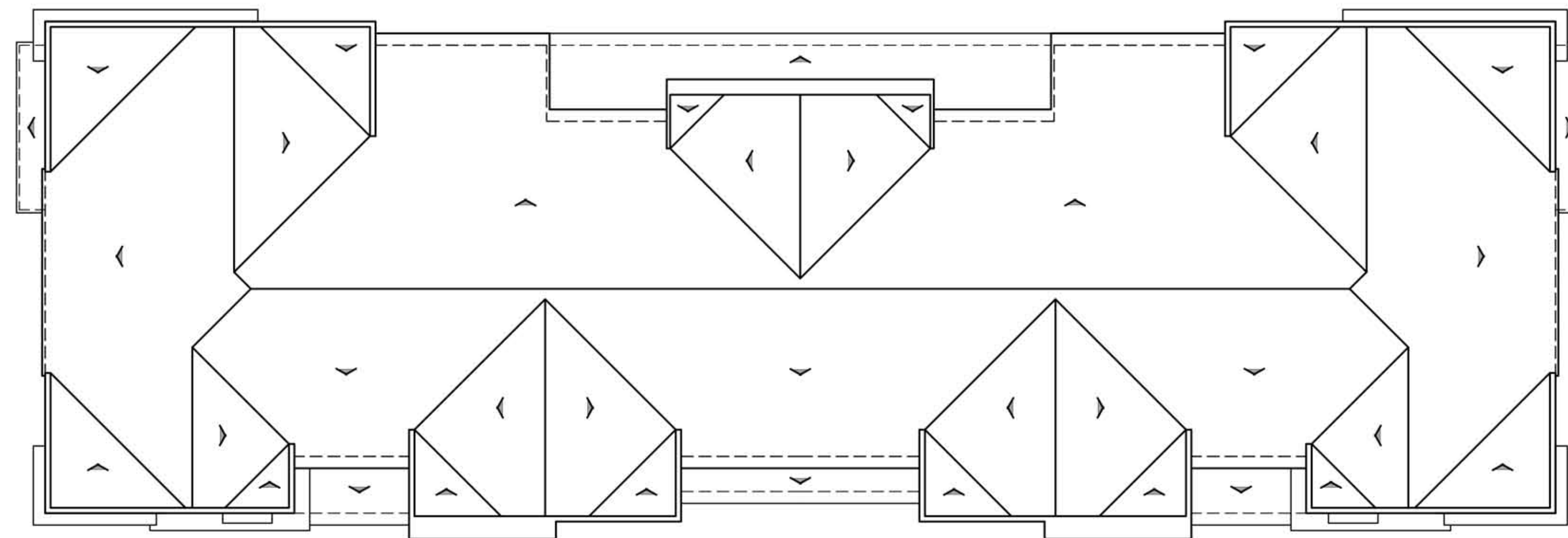
REAR

BUILDING A - 6-PLEX

Front and Rear Elevations

FAIRLYNN TOWNHOMES

Unincorporated Orange County, California



ROOF PLAN

PITCH: 2.5:12
 RAKE: 3"
 EAVE: 12"
 ROOF MATERIAL: COMPOSITION SHINGLE

MATERIAL LEGEND

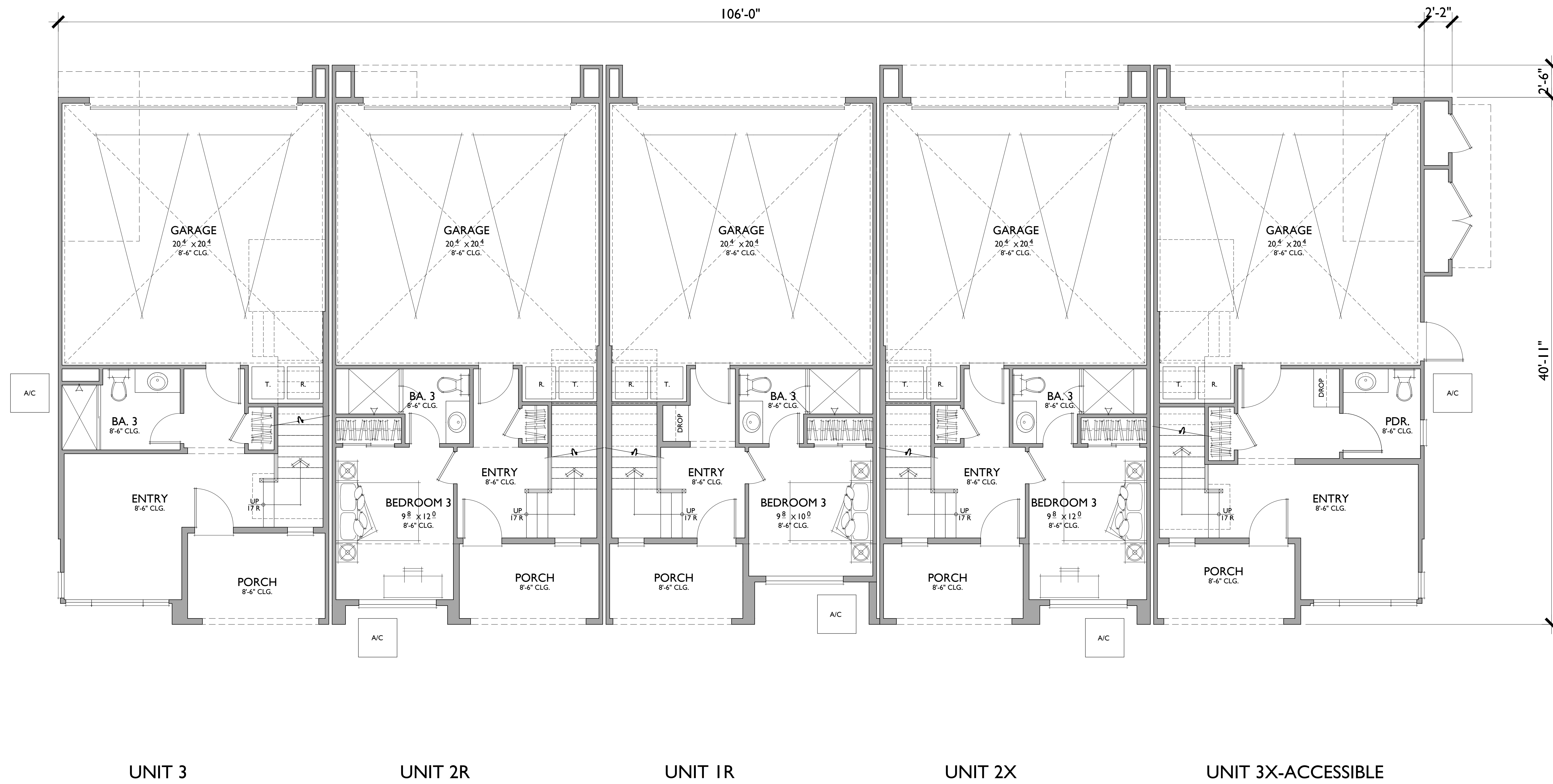
- A. COMPOSITION SHINGLE ROOF
- B. STANDING SEAM METAL ROOF
- C. STUCCO (COLOR VARIES)
- D. METAL SECTIONAL GARAGE DOOR
- E. DECORATIVE LIGHT FIXTURE
- F. CEMENTITIOUS HORIZONTAL SIDING
- G. VINYL WINDOW
- H. STUCCO OVER FOAM TRIM
- I. CEMENTITIOUS TRIM



LEFT



RIGHT



UNIT 1

3 BEDROOMS / 3.5 BATHS / DECK
2 - CAR GARAGE

FLOOR AREA TABLE	
1ST FLOOR	320 SQ. FT.
2ND FLOOR	728 SQ. FT.
3RD FLOOR	623 SQ. FT.
TOTAL	1,671 SQ. FT.
2 - CAR GARAGE	454 SQ. FT.
PORCH	69 SQ. FT.
DECK	72 SQ. FT.

NOTE: SQUARE FOOTAGE MAY VARY DUE TO METHOD OF CALCULATION

UNIT 2

3 BEDROOMS / 3.5 BATHS + BONUS ROOM / DECK
2 - CAR GARAGE

FLOOR AREA TABLE	
1ST FLOOR	337 SQ. FT.
2ND FLOOR	741 SQ. FT.
3RD FLOOR	767 SQ. FT.
TOTAL	1,845 SQ. FT.
2 - CAR GARAGE	454 SQ. FT.
PORCH	53 SQ. FT.
DECK	75 SQ. FT.

NOTE: SQUARE FOOTAGE MAY VARY DUE TO METHOD OF CALCULATION

UNIT 2X

3 BEDROOMS / 3.5 BATHS + BONUS ROOM / DECK
2 - CAR GARAGE

FLOOR AREA TABLE	
1ST FLOOR	337 SQ. FT.
2ND FLOOR	741 SQ. FT.
3RD FLOOR	767 SQ. FT.
TOTAL	1,845 SQ. FT.
2 - CAR GARAGE	454 SQ. FT.
PORCH	70 SQ. FT.
DECK	78 SQ. FT.

NOTE: SQUARE FOOTAGE MAY VARY DUE TO METHOD OF CALCULATION

UNIT 3

3 BEDROOMS / 3.5 BATHS / DECK
2 - CAR GARAGE

FLOOR AREA TABLE	
1ST FLOOR	342 SQ. FT.
2ND FLOOR	788 SQ. FT.
3RD FLOOR	815 SQ. FT.
TOTAL	1,945 SQ. FT.
2 - CAR GARAGE	455 SQ. FT.
PORCH	84 SQ. FT.
DECK	83 SQ. FT.

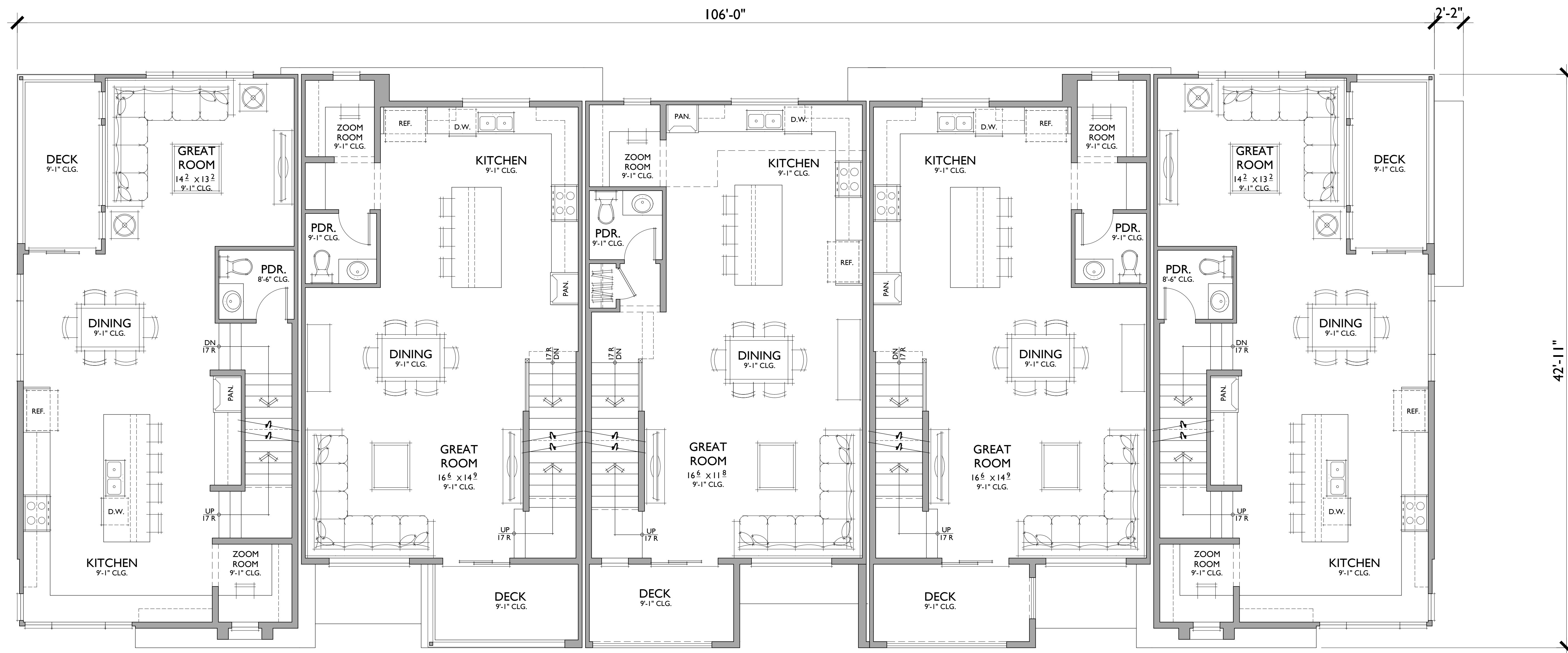
NOTE: SQUARE FOOTAGE MAY VARY DUE TO METHOD OF CALCULATION

UNIT 3X - ACC.

3 BEDROOMS / 2 BATHS / 2 PDR. / DECK
2 - CAR GARAGE

FLOOR AREA TABLE	
1ST FLOOR	356 SQ. FT.
2ND FLOOR	788 SQ. FT.
3RD FLOOR	815 SQ. FT.
TOTAL	1,959 SQ. FT.
2 - CAR GARAGE	455 SQ. FT.
PORCH	69 SQ. FT.
DECK	83 SQ. FT.

NOTE: SQUARE FOOTAGE MAY VARY DUE TO METHOD OF CALCULATION



UNIT 3

UNIT 2R

UNIT 1R

UNIT 2X

UNIT 3X-ACCESSIBLE

UNIT 1

3 BEDROOMS / 3.5 BATHS / DECK
2 - CAR GARAGE

FLOOR AREA TABLE	
1ST FLOOR	320 SQ. FT.
2ND FLOOR	728 SQ. FT.
3RD FLOOR	623 SQ. FT.
TOTAL	1,671 SQ. FT.
2 - CAR GARAGE	454 SQ. FT.
PORCH	69 SQ. FT.
DECK	72 SQ. FT.

NOTE: SQUARE FOOTAGE MAY VARY DUE TO METHOD OF CALCULATION

UNIT 2

3 BEDROOMS / 3.5 BATHS + BONUS ROOM / DECK
2 - CAR GARAGE

FLOOR AREA TABLE	
1ST FLOOR	337 SQ. FT.
2ND FLOOR	741 SQ. FT.
3RD FLOOR	767 SQ. FT.
TOTAL	1,845 SQ. FT.
2 - CAR GARAGE	454 SQ. FT.
PORCH	53 SQ. FT.
DECK	75 SQ. FT.

NOTE: SQUARE FOOTAGE MAY VARY DUE TO METHOD OF CALCULATION

UNIT 2X

3 BEDROOMS / 3.5 BATHS + BONUS ROOM / DECK
2 - CAR GARAGE

FLOOR AREA TABLE	
1ST FLOOR	337 SQ. FT.
2ND FLOOR	741 SQ. FT.
3RD FLOOR	767 SQ. FT.
TOTAL	1,845 SQ. FT.
2 - CAR GARAGE	454 SQ. FT.
PORCH	70 SQ. FT.
DECK	78 SQ. FT.

NOTE: SQUARE FOOTAGE MAY VARY DUE TO METHOD OF CALCULATION

UNIT 3

3 BEDROOMS / 3.5 BATHS / DECK
2 - CAR GARAGE

FLOOR AREA TABLE	
1ST FLOOR	342 SQ. FT.
2ND FLOOR	788 SQ. FT.
3RD FLOOR	815 SQ. FT.
TOTAL	1,945 SQ. FT.
2 - CAR GARAGE	455 SQ. FT.
PORCH	84 SQ. FT.
DECK	83 SQ. FT.

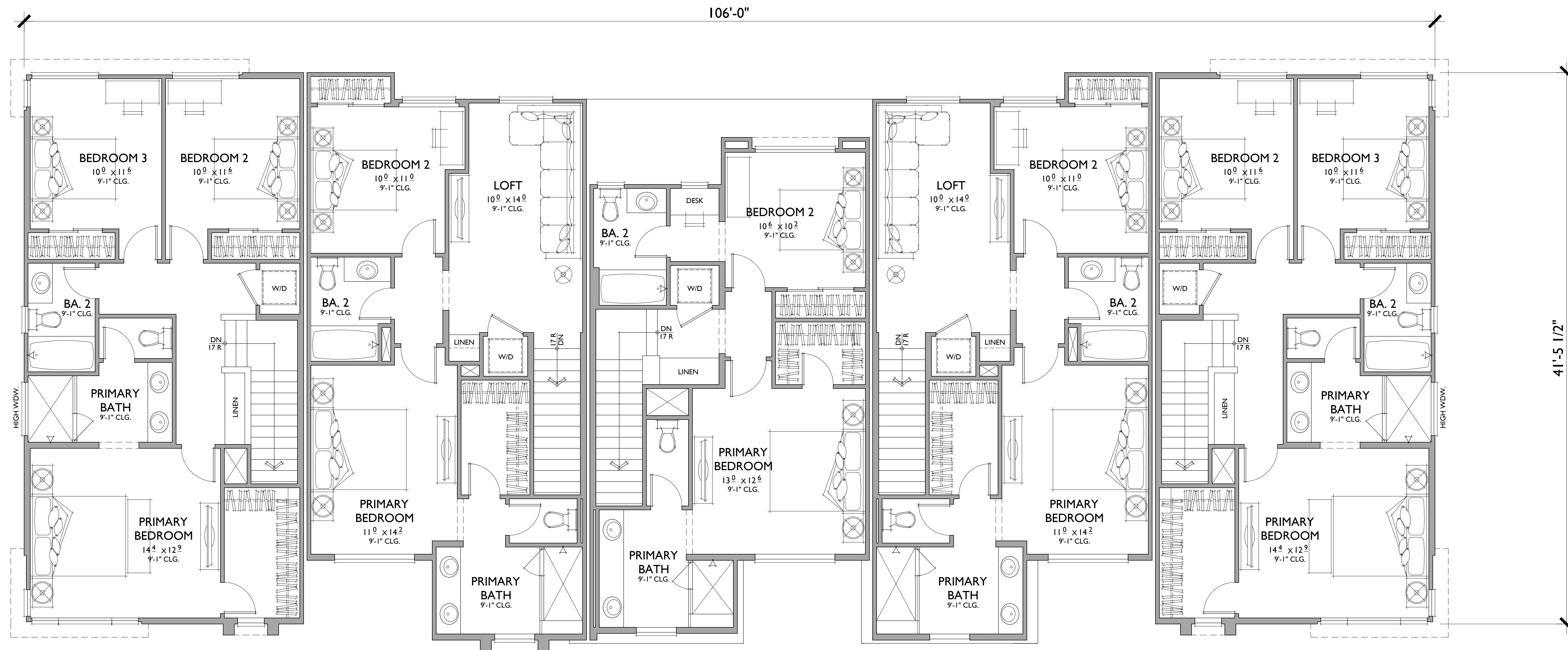
NOTE: SQUARE FOOTAGE MAY VARY DUE TO METHOD OF CALCULATION

UNIT 3X - ACC.

3 BEDROOMS / 2 BATHS / 2 PDR. / DECK
2 - CAR GARAGE

FLOOR AREA TABLE	
1ST FLOOR	356 SQ. FT.
2ND FLOOR	788 SQ. FT.
3RD FLOOR	815 SQ. FT.
TOTAL	1,959 SQ. FT.
2 - CAR GARAGE	455 SQ. FT.
PORCH	69 SQ. FT.
DECK	83 SQ. FT.

NOTE: SQUARE FOOTAGE MAY VARY DUE TO METHOD OF CALCULATION



UNIT 3

UNIT 2R

UNIT 1R

UNIT 2X

UNIT 3X-ACCESSIBLE

UNIT 1

3 BEDROOMS / 3.5 BATHS / DECK
2 - CAR GARAGE

FLOOR AREA TABLE	
1ST FLOOR	320 SQ. FT.
2ND FLOOR	728 SQ. FT.
3RD FLOOR	623 SQ. FT.
TOTAL	1,671 SQ. FT.
2 - CAR GARAGE	454 SQ. FT.
PORCH	69 SQ. FT.
DECK	72 SQ. FT.

NOTE: SQUARE FOOTAGE MAY VARY DUE TO METHOD OF CALCULATION

UNIT 2

3 BEDROOMS / 3.5 BATHS + BONUS ROOM / DECK
2 - CAR GARAGE

FLOOR AREA TABLE	
1ST FLOOR	337 SQ. FT.
2ND FLOOR	741 SQ. FT.
3RD FLOOR	767 SQ. FT.
TOTAL	1,845 SQ. FT.
2 - CAR GARAGE	454 SQ. FT.
PORCH	53 SQ. FT.
DECK	75 SQ. FT.

NOTE: SQUARE FOOTAGE MAY VARY DUE TO METHOD OF CALCULATION

UNIT 2X

3 BEDROOMS / 3.5 BATHS + BONUS ROOM / DECK
2 - CAR GARAGE

FLOOR AREA TABLE	
1ST FLOOR	337 SQ. FT.
2ND FLOOR	741 SQ. FT.
3RD FLOOR	767 SQ. FT.
TOTAL	1,845 SQ. FT.
2 - CAR GARAGE	454 SQ. FT.
PORCH	70 SQ. FT.
DECK	78 SQ. FT.

NOTE: SQUARE FOOTAGE MAY VARY DUE TO METHOD OF CALCULATION

UNIT 3

3 BEDROOMS / 3.5 BATHS / DECK
2 - CAR GARAGE

FLOOR AREA TABLE	
1ST FLOOR	342 SQ. FT.
2ND FLOOR	788 SQ. FT.
3RD FLOOR	815 SQ. FT.
TOTAL	1,945 SQ. FT.
2 - CAR GARAGE	455 SQ. FT.
PORCH	84 SQ. FT.
DECK	83 SQ. FT.

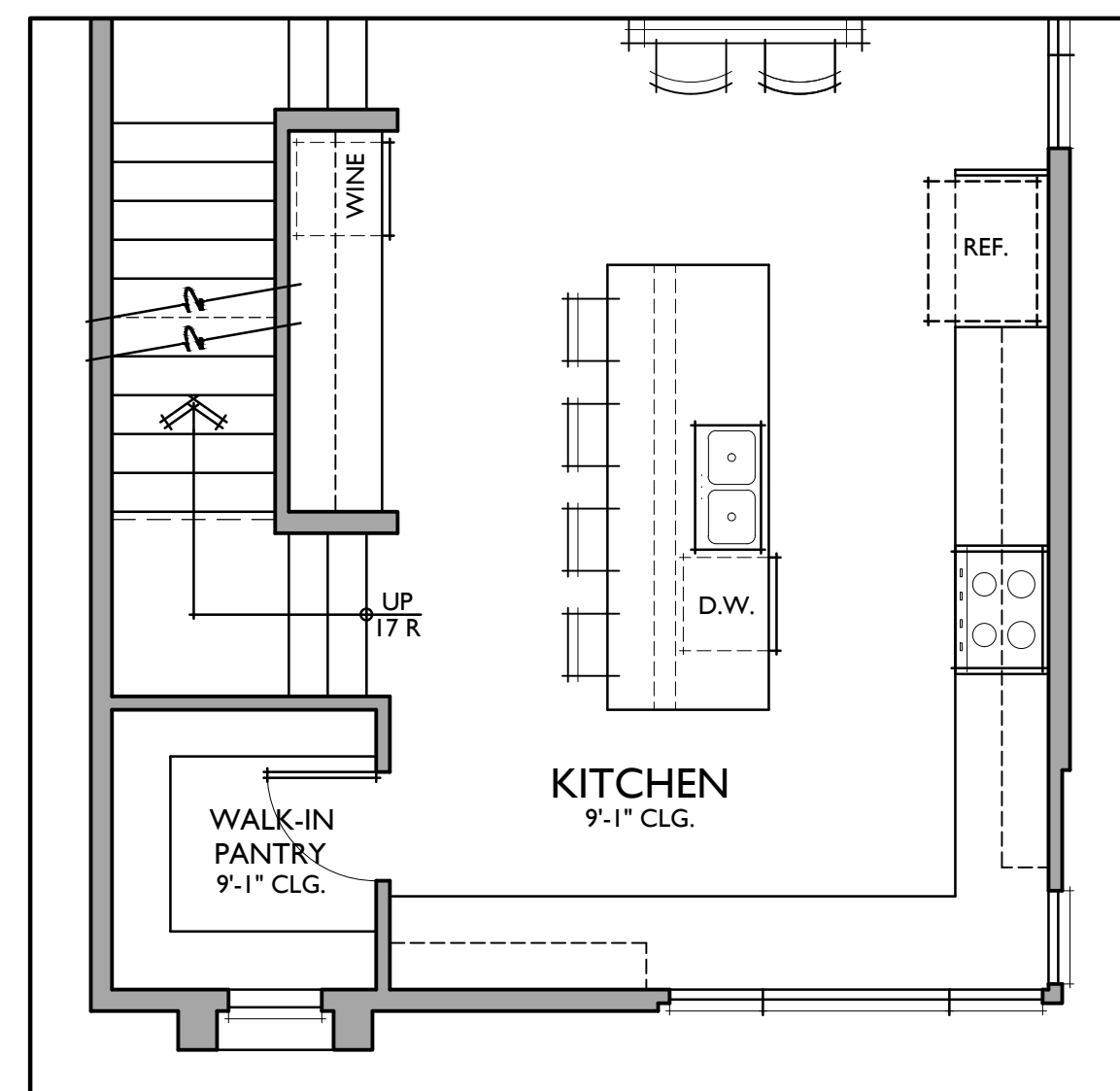
NOTE: SQUARE FOOTAGE MAY VARY DUE TO METHOD OF CALCULATION

UNIT 3X - ACC.

3 BEDROOMS / 2 BATHS / 2 PDR. / DECK
2 - CAR GARAGE

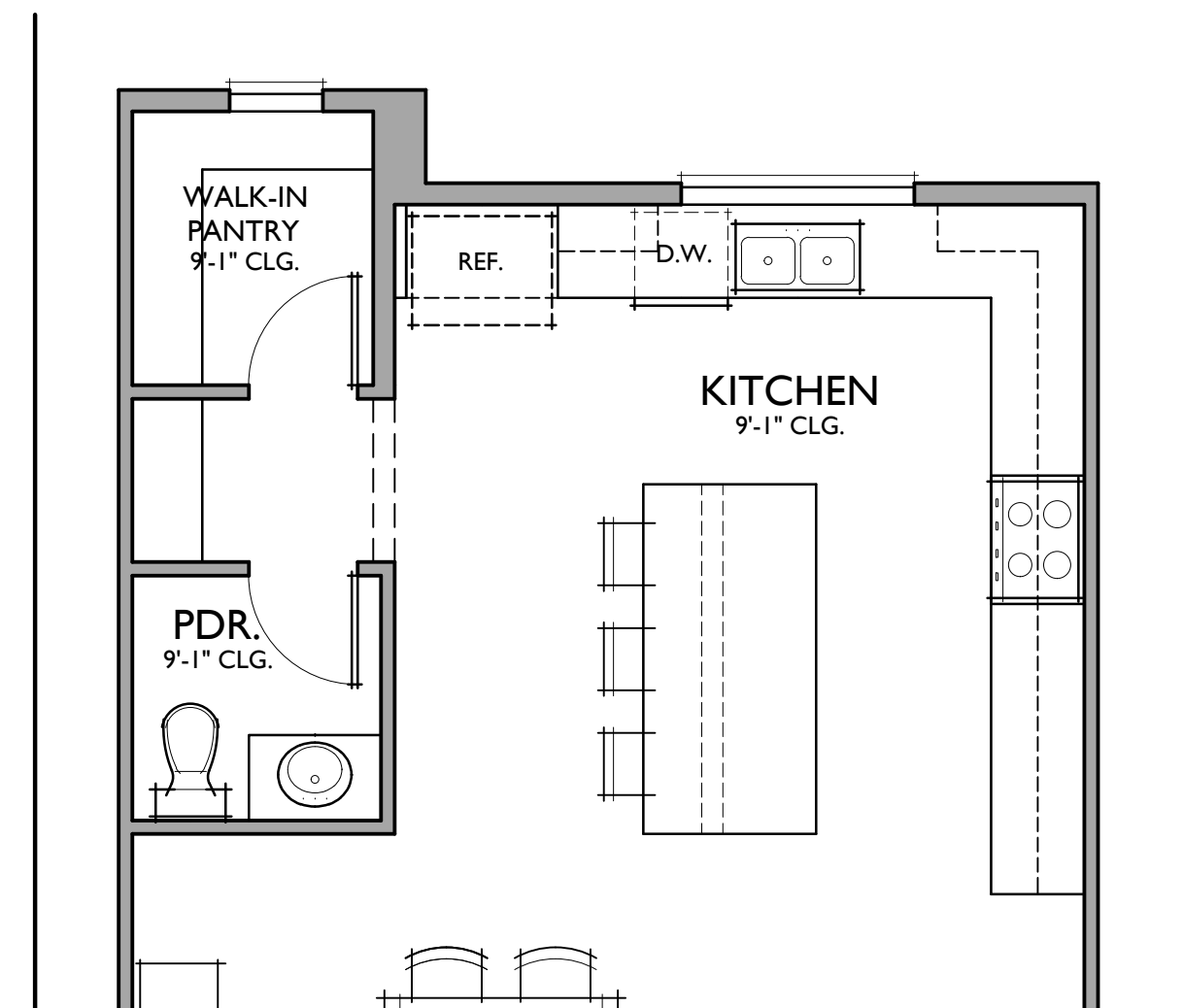
FLOOR AREA TABLE	
1ST FLOOR	356 SQ. FT.
2ND FLOOR	788 SQ. FT.
3RD FLOOR	815 SQ. FT.
TOTAL	1,959 SQ. FT.
2 - CAR GARAGE	455 SQ. FT.
PORCH	69 SQ. FT.
DECK	83 SQ. FT.

NOTE: SQUARE FOOTAGE MAY VARY DUE TO METHOD OF CALCULATION



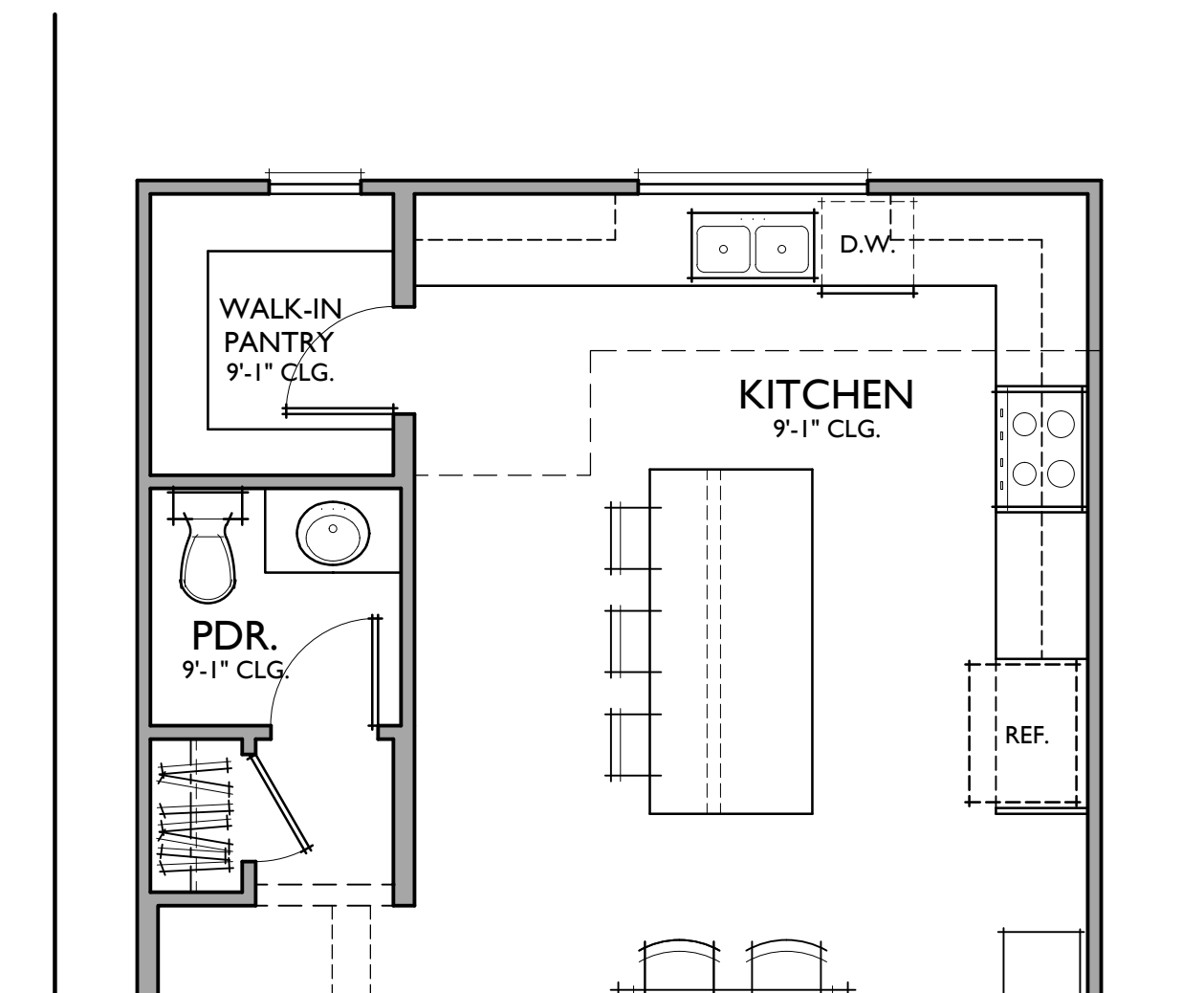
OPTIONAL WALK-IN PANTRY

IN LIEU OF ZOOM ROOM - PLAN 3 / 3X



OPTIONAL WALK IN PANTRY

IN LIEU OF ZOOM ROOM - PLAN 2



OPTIONAL WALK IN PANTRY

IN LIEU OF ZOOM ROOM - PLAN 1R



FRONT

MATERIAL LEGEND

- A. COMPOSITION SHINGLE ROOF
- B. STANDING SEAM METAL ROOF
- C. STUCCO (COLOR VARIES)
- D. METAL SECTIONAL GARAGE DOOR
- E. DECORATIVE LIGHT FIXTURE
- F. CEMENTITIOUS HORIZONTAL SIDING
- G. VINYL WINDOW
- H. STUCCO OVER FOAM TRIM
- I. CEMENTITIOUS TRIM

5-PLEX
1/4"=1'-0"



REAR

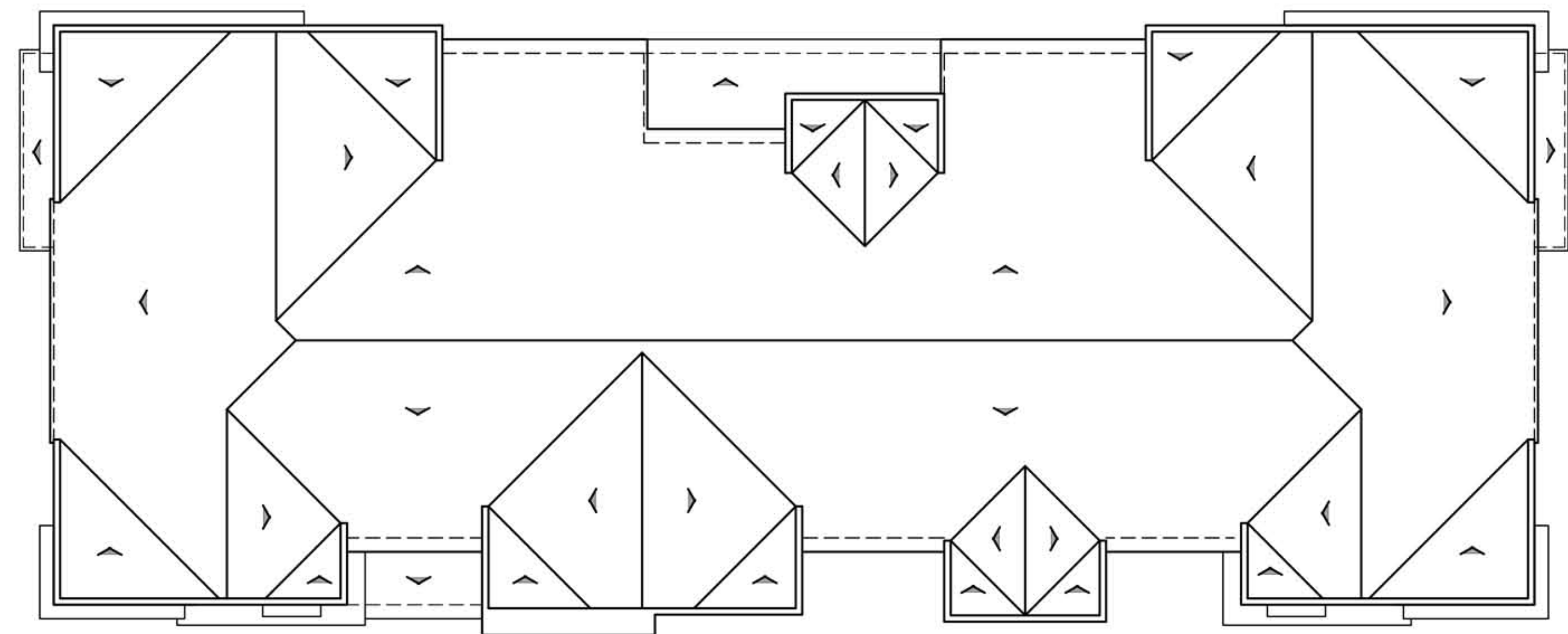
BUILDING B - 5-PLEX

Front and Rear Elevations

FAIRLYNN TOWNHOMES

Unincorporated Orange County, California

0 2 4 8 978.21437



ROOF PLAN

PITCH: 2.5:12
 RAKE: 3"
 EAVE: 12"
 ROOF MATERIAL: COMPOSITION SHINGLE

MATERIAL LEGEND

- A. COMPOSITION SHINGLE ROOF
- B. STANDING SEAM METAL ROOF
- C. STUCCO (COLOR VARIES)
- D. METAL SECTIONAL GARAGE DOOR
- E. DECORATIVE LIGHT FIXTURE
- F. CEMENTITIOUS HORIZONTAL SIDING
- G. VINYL WINDOW
- H. STUCCO OVER FOAM TRIM
- I. CEMENTITIOUS TRIM



LEFT



RIGHT