

Fairmont fence Sign 60" w x 32" h mounted on 3" d white painted pan-Fits in frame on Wrought Iron fence
Fairmont letters, Border, Text all 1/4" acrylic, Colors are painted white, black, DES873 blue and DEA105 Red
Border is 1.125" wide

80 in

32 in

1280 N. Hancock St., #100
Anaheim, CA 92807
Phone: (714) 899-2989
Fax: (714) 899-2925
AmericaOnline: @sigma.com

Date: 12-18-21 Job #: fair1445 - pgs 1 - version 6
Client: David R. Jackson - Fairmont Private School

Please review all details of this design including color designations and spacing. You are responsible for any errors that are a result of those that were not brought to our attention. This is an initial design and is not intended to be a final construction drawing. It is not intended to be used for construction purposes without the approval of the architect. All dimensions are in inches unless otherwise noted. All materials are to be standard industry practice unless otherwise noted. All materials are to be standard industry practice unless otherwise noted.

Fairmont Wall Sign
72" w x 38.4" h mounted on white Painted Aluminum Pan 1" d - Hangs on Wall / replaces existing letters
Fairmont letters, Border, Text all 1/4" acrylic, Colors are painted white, black, DES873 blue and DEA105 Red

72 in

38.4 in

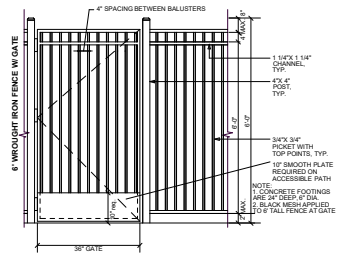
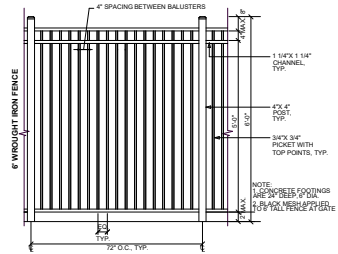
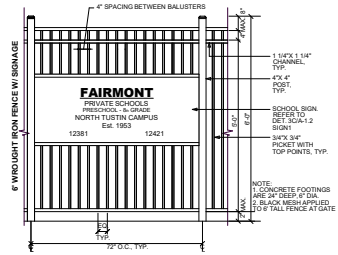
1280 N. Hancock St., #100
Anaheim, CA 92807
Phone: (714) 899-2989
Fax: (714) 899-2925
AmericaOnline: @sigma.com

Date: 12-18-21 Job #: fair1445 - pgs 2 - version 6
Client: David R. Jackson - Fairmont Private School

Please review all details of this design including color designations and spacing. You are responsible for any errors that are a result of those that were not brought to our attention. This is an initial design and is not intended to be a final construction drawing. It is not intended to be used for construction purposes without the approval of the architect. All dimensions are in inches unless otherwise noted. All materials are to be standard industry practice unless otherwise noted. All materials are to be standard industry practice unless otherwise noted.

SIGN 1

SIGN 2

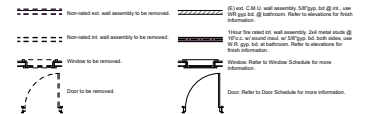


1 Wrought Iron Fencing
SCALE: 3/4" = 1'-0"

Existing / Demolition Floor Plan Keynotes

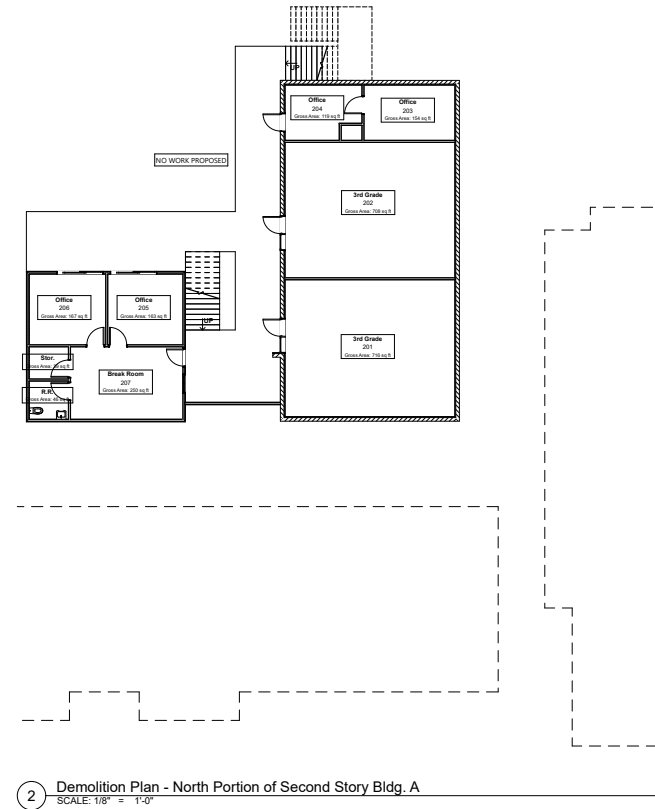
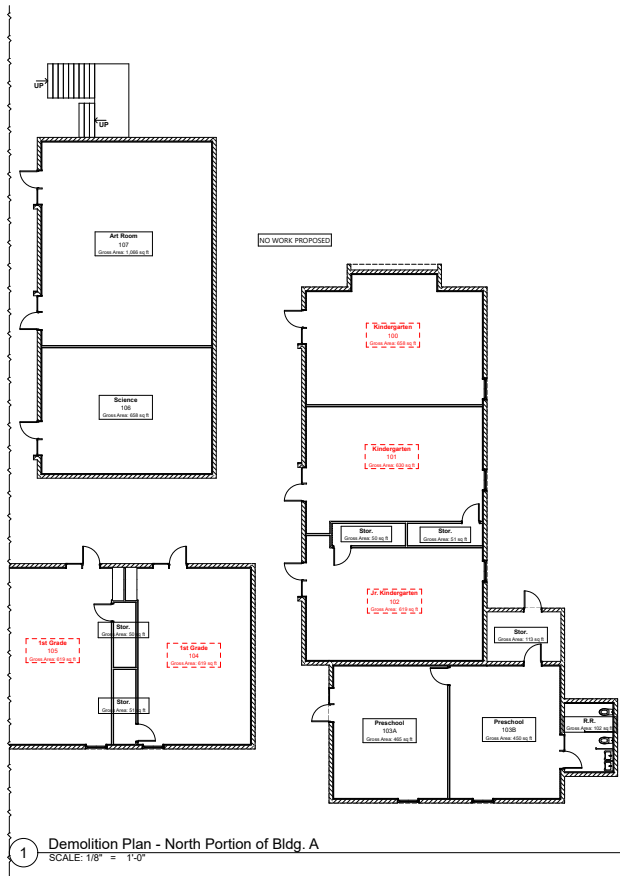
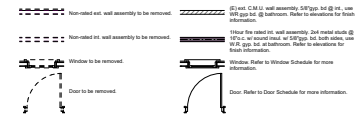
- 2.01 Remove (E) wall
- 2.02 Remove (E) partition
- 2.03 (E) plumbing fixture to remain, protect in place.
- 2.27 Area of work.

Existing / Demolition Floor Plan Legend



1 Demolition Plan - South Portion of Bldg. A
SCALE: 1/8" = 1'-0"

Existing / Demolition Floor Plan Legend

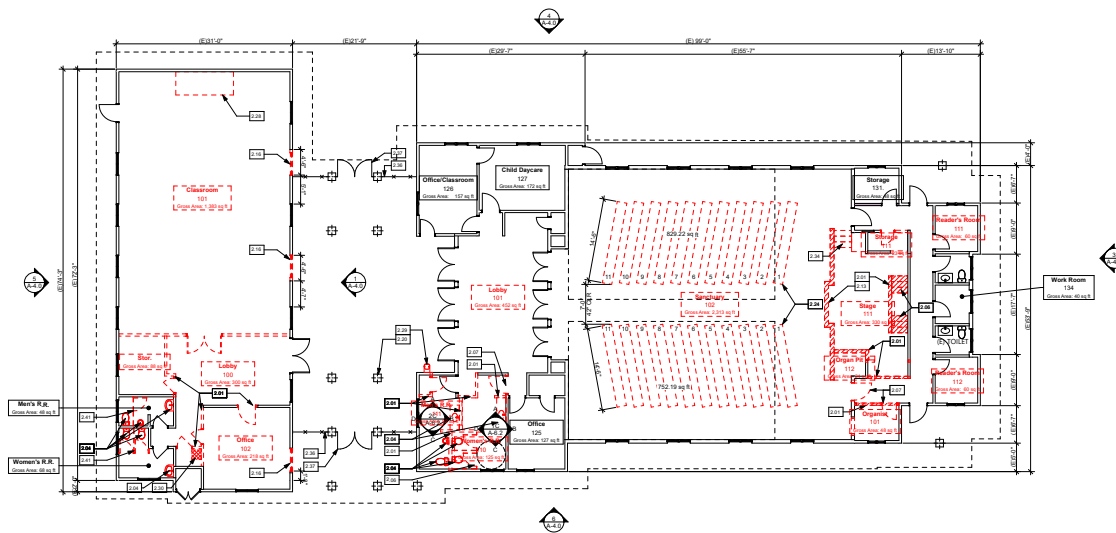


Existing / Demolition Floor Plan Keynotes

- 2.01 Remove (E) wall
- 2.04 (E) planing fixture to be removed.
- 2.06 (E) stall partitions to be removed in their entirety.
- 2.07 (E) Door and frame to be removed in it's entirety, typ.
- 2.13 Remove top portion of (E) CMU wall to allow future extension of (N) stage platform.
- 2.16 (E) Window and frame to be removed in it's entirety, typ.
- 2.20 (E) Post to remain, typ.
- 2.24 (E) Permanent seating to be removed.
- 2.28 (E) Framed platform to be demolished.
- 2.29 (E) Drinking fountain to be removed.
- 2.30 (E) ventilation duct to be removed and rerouted.
- 2.34 (E) Stairs to be removed.
- 2.36 (E) Wrought iron fence to remain.
- 2.37 (E) Wrought iron gate to remain.

Existing / Demolition Floor Plan Legend

- Non-voided int. wall assembly to be removed
- Non-voided int. wall assembly to be removed
- Window to be removed
- Door to be removed
- (E) Cast CMU wall assembly 8" type, 8# @ 16" max. 1/2" gap to (E) interior. Refer to schedule for frame dimensions.
- Hatched int. wall assembly 2nd metal studs @ 16" max. on center. 1/2" gap to (E) interior. Refer to schedule for frame dimensions.
- Window. Refer to Window Schedule for more information.
- Door. Refer to Door Schedule for more information.



1 Building B First Floor Plan / Demolition Plan
SCALE: 1/8" = 1'-0"

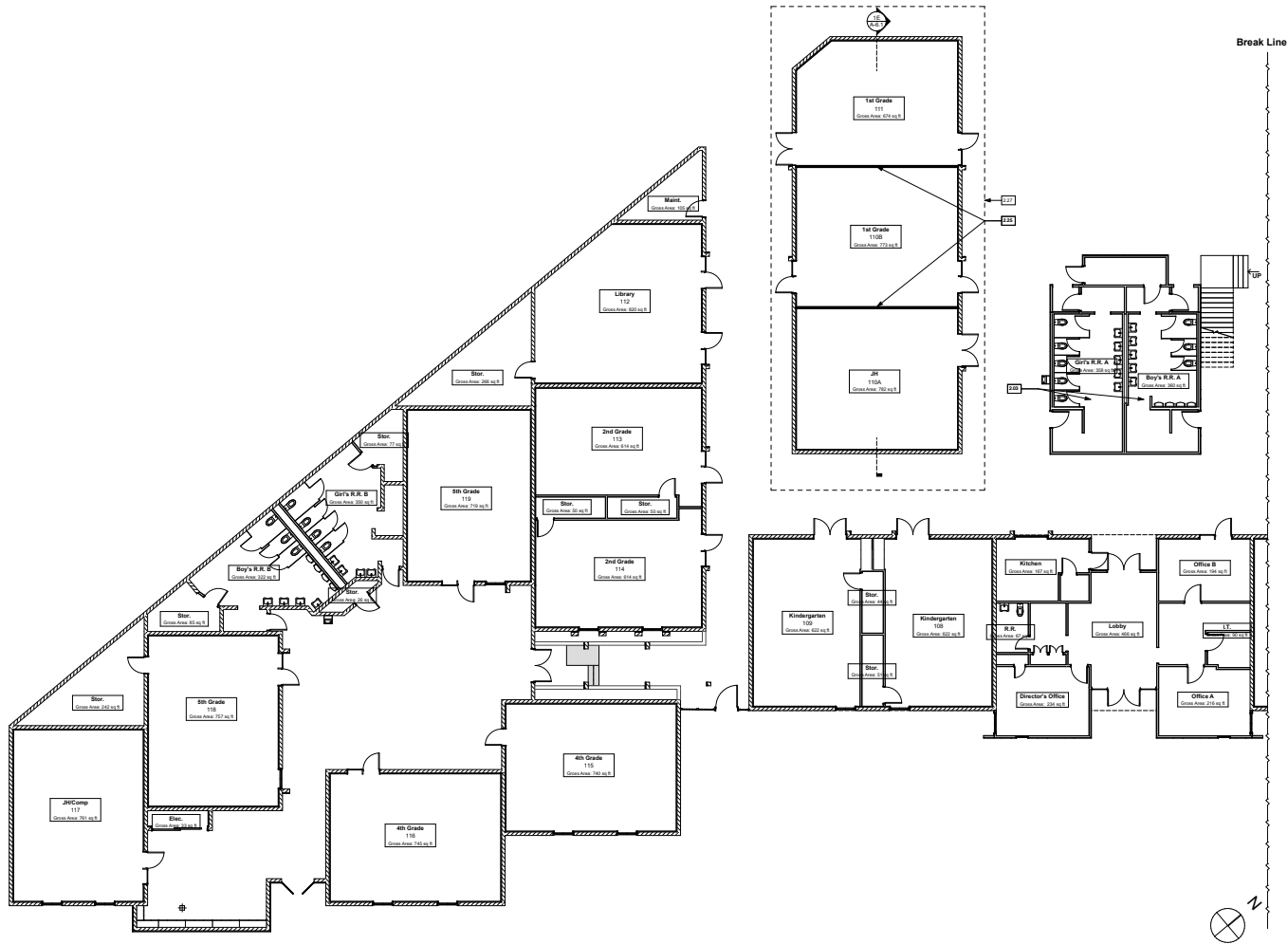


Proposed Floor Plan Keynotes

2.03	(E) plumbing fixture to remain, protect in place.
2.25	(N) Non-load bearing partition wall w/ acoustical insulation.
2.27	Area of work.

Proposed Floor Plan Legend

- (E) ext. C.M.U. wall assembly, 5/8" top, 1/2" int., 1/2" int. 1/2" top, 1/2" int. 1/2" bottom. Refer to drawings for more information.
- Refer to notes for wall assembly. 2nd coat shall be 1/2" int. w/ mineral wool w/ 5/8" top, 1/2" int. 1/2" bottom. Refer to drawings for more information.
- Windows. Refer to Window Schedule for more information.
- Door. Refer to Door Schedule for more information.



1 Proposed First Floor Plan - South Portion of Bldg A

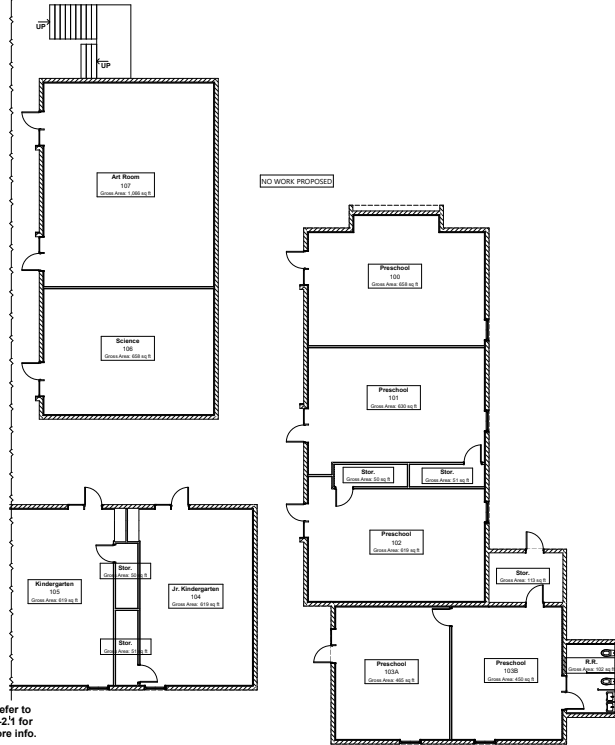
Proposed Floor Plan Keynotes



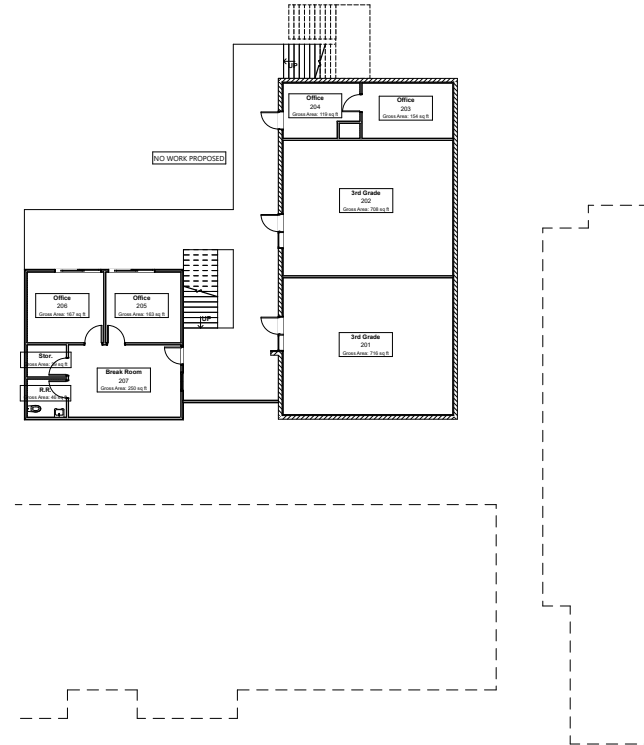
Proposed Floor Plan Legend

- (S) and (C) and assembly 5/8" type 42 sq. ft. use 1/8" type 42 sq. ft. thickness. Refer to schedule for more information.
- Refer to schedule for more information. 2nd level above 1/2" type 42 sq. ft. use 1/8" type 42 sq. ft. thickness. Refer to schedule for more information.
- Windows. Refer to Window Schedule for more information.
- Door. Refer to Door Schedule for more information.

Refer to A-2.1 for more info.



1 Proposed Plan - North Portion of Bldg A (No Scope of Work)
SCALE: 1/8" = 1'-0"



2 Proposed Plan - North Portion of Second Story Bldg A (No Scope of Work)
SCALE: 1/8" = 1'-0"



Proposed Floor Plan Keynotes

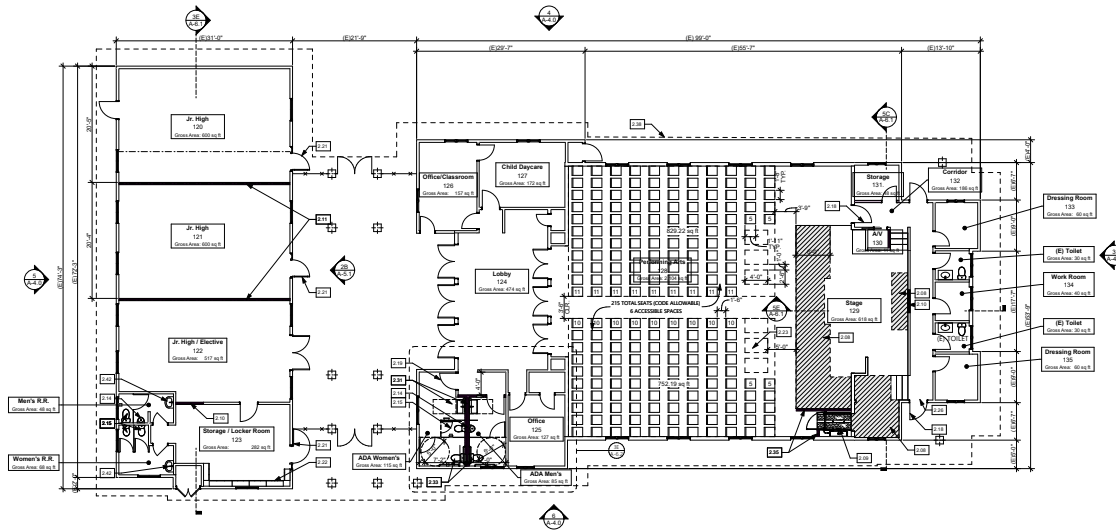
- 2.08 Extend (E) stage
- 2.09 Install (N) ADA lift
- 2.10 Install (N) 2x4 wood stud partition walls
- 2.11 Install (N) 2x4 wood stud wall to divide new classrooms w/ 1 hr. fire rating
- 2.14 Wall mounted urinal and modesty panel
- 2.15 Floor mounted water closet and partitions to be installed.
- 2.18 Install panic hardware on (E) exit door
- 2.19 Modify (E) doors w/ push/pull & non-sliding hardware. Refer to A-8.1 for more information.
- 2.21 (N) Classroom entrance door with spigote, typ.
- 2.22 Install 12" x 18" wide school lockers
- 2.23 Wheelchair spaces per CIBC 118-221.2.1.1 & 118-802.1.2
- 2.26 Exit door sign.
- 2.31 Accessible sink with 30"x48" clearance.
- 2.33 ADA Restroom stall with floor mounted partitions, wall mounted grab bars, and 9" turning dia. clearance. Refer to detail A-E.A.D.6 for more info.
- 2.35 Install 10" x 16" 2x4 wood stud walls, 98" Type 'O' gyp. bd. on both side and top.
- 2.38 Outline of (E) roof above.

REQUIRED PLUMBING FIXTURES (PER CFC TABLE 422.1)
(BASED ON TOTAL OF 74 SANCTUARY OCCUPANTS DIVIDED EQUALLY AMONG DENISORS)

	WATER CLOSETS		URINALS		LAVATORIES	
	UNISEX	MALE	FEMALE	UNISEX	MALE	FEMALE
REQUIRED	1	1	1	1	1	1
PROVIDED	N/A	1	2	1	1	1

Proposed Floor Plan Legend

- (E) ext. C.M.U. wall assembly, 5/8" top, 1/2" int., 1/2" int. 1/2" top, 1/2" int. 1/2" bottom. Refer to schedule for more information.
- Floor for school is self assembly 2x4 wood stud @ 16" o.c. w/ 1/2" gypsum w/ 5/8" top, 1/2" int. 1/2" bottom. Refer to schedule for more information.
- Windows. Refer to Window Schedule for more information.
- Door. Refer to Door Schedule for more information.



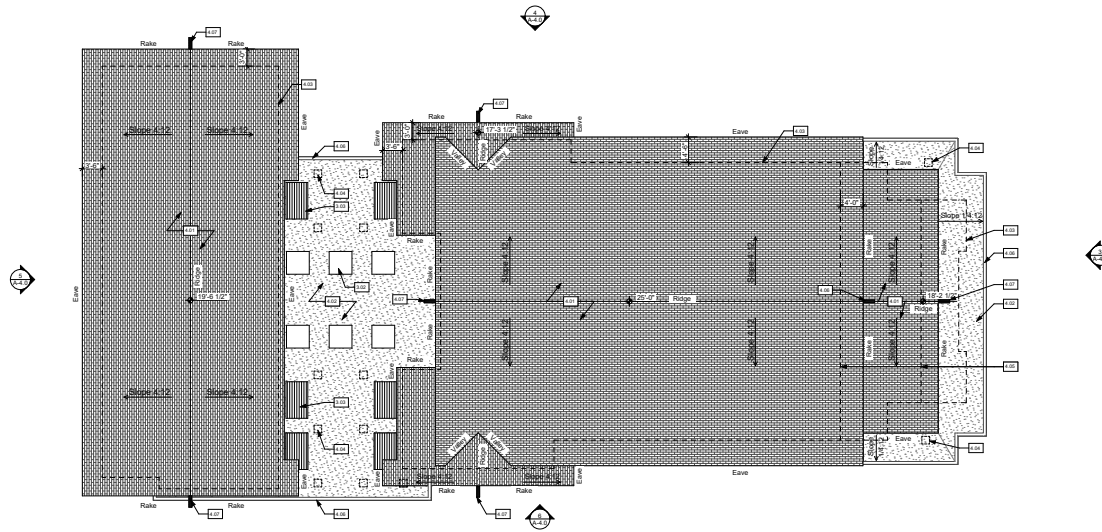
1 Sunday School and Sanctuary Proposed Plan
SCALE: 1/8" = 1'-0"

Roof Plan Keynotes

- 3.02 (E) 4'x4' Plastic dome skylight to remain, TYP.
- 3.03 (E) Open roof with wood screen to remain, TYP.
- 4.01 (E) Asphalt shingle roof to remain.
- 4.02 (E) Composition gravel surfaced roofing to remain.
- 4.03 Outline of (E) BLDG. below.
- 4.04 Outline of (E) columns below.
- 4.05 Outline of (E) gable wall to remain.
- 4.06 (E) G.I. gutter to remain.
- 4.07 (E) 6x18 RSJ outlookers to remain.

Roof Plan Legend

-  (E) Asphalt shingle roof to remain.
-  (E) Composition gravel surfaced roofing to remain.



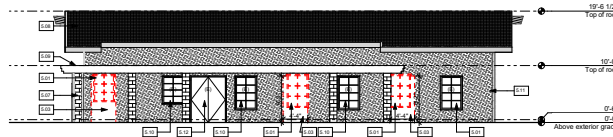
1 Existing Roof Floor Plan
SCALE: 1/8" = 1'-0"

Roof Plan Keynotes

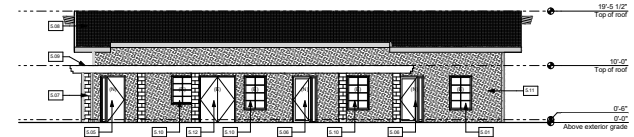
- 5.01 (E) Window and frame to be demolished in it's entirety, typ.
- 5.03 (E) Portion of wall to be demolished, typ. See proposed elevation for more info.
- 5.05 (N) Opening for access to accessible restroom.
- 5.06 (N) Door with sidelite window.
- 5.07 (E) 18" Square masonry column to remain, TYP.
- 5.08 (E) Asphalt shingle roof to remain.
- 5.09 (E) Composition gravel surfaced roof to remain.
- 5.10 (E) Window and frame to remain.
- 5.11 (E) Stucco finish exterior wall to remain.
- 5.12 (E) Door and frame to remain.
- 5.13 (E) 6x6 RIS outdoor to remain.
- 5.14 (E) Exposed wood rafter to remain.
- 5.15 (E) Wood grille wall to remain.
- 5.16 (E) Wood grille to remain.
- 5.17 (E) 12" wide x 4" Thick slumpstone veneer to remain, TYP.
- 5.18 (E) Window and frame beyond wood grille to remain.
- 5.19 (E) 18" wide x 4" Thick slumpstone veneer to remain, TYP.
- 5.21 (E) Wrought iron fence to remain.
- 5.22 (E) Wrought iron gate to remain.

Roof Plan Legend

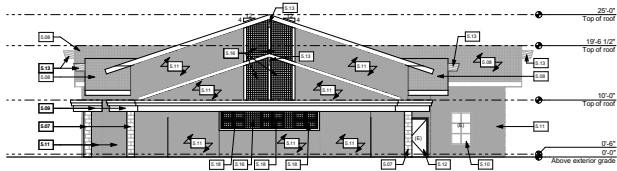
-  (E) Asphalt shingle roof to remain.
-  (E) Stucco finish exterior wall to remain.



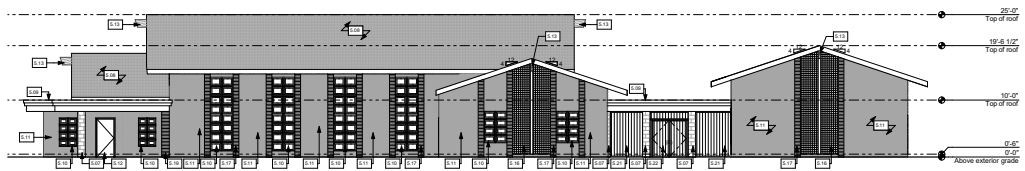
1 Existing South East Sunday School Exterior Elevation
SCALE: 1/8" = 1'-0"



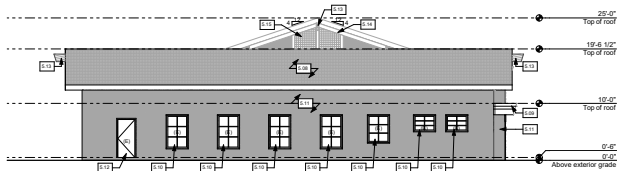
2 Proposed South East Sunday School Exterior Elevation
SCALE: 1/8" = 1'-0"



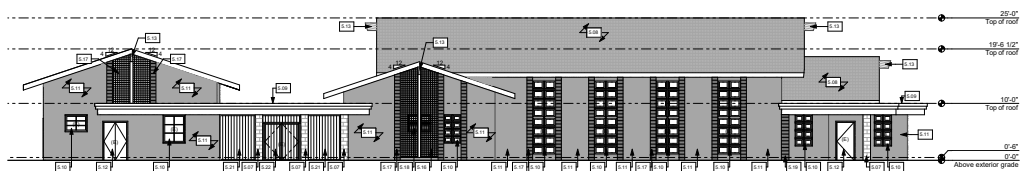
3 South East Building B Exterior Elevation - No Change
SCALE: 1/8" = 1'-0"



4 North East Building B Exterior Elevation - No Change
SCALE: 1/8" = 1'-0"



5 North West Building B Exterior Elevation - No Change
SCALE: 1/8" = 1'-0"



6 South West Building B Exterior Elevation - No Change
SCALE: 1/8" = 1'-0"



145 S. Olive Street
Orange, CA 92668
(714) 930-2658
ARCHITECT'S FAX
dse@dsen.com

Existing / Proposed Building B Exterior Elevations

Fairmont Private School

North Tustin Campus

12381-12421 & 12561 Newport Ave., Santa Ana, CA 92705

A-4.0

Printed on 10/21/2022