
APPENDIX F1

JURISDICTIONAL DELINEATION MEMO



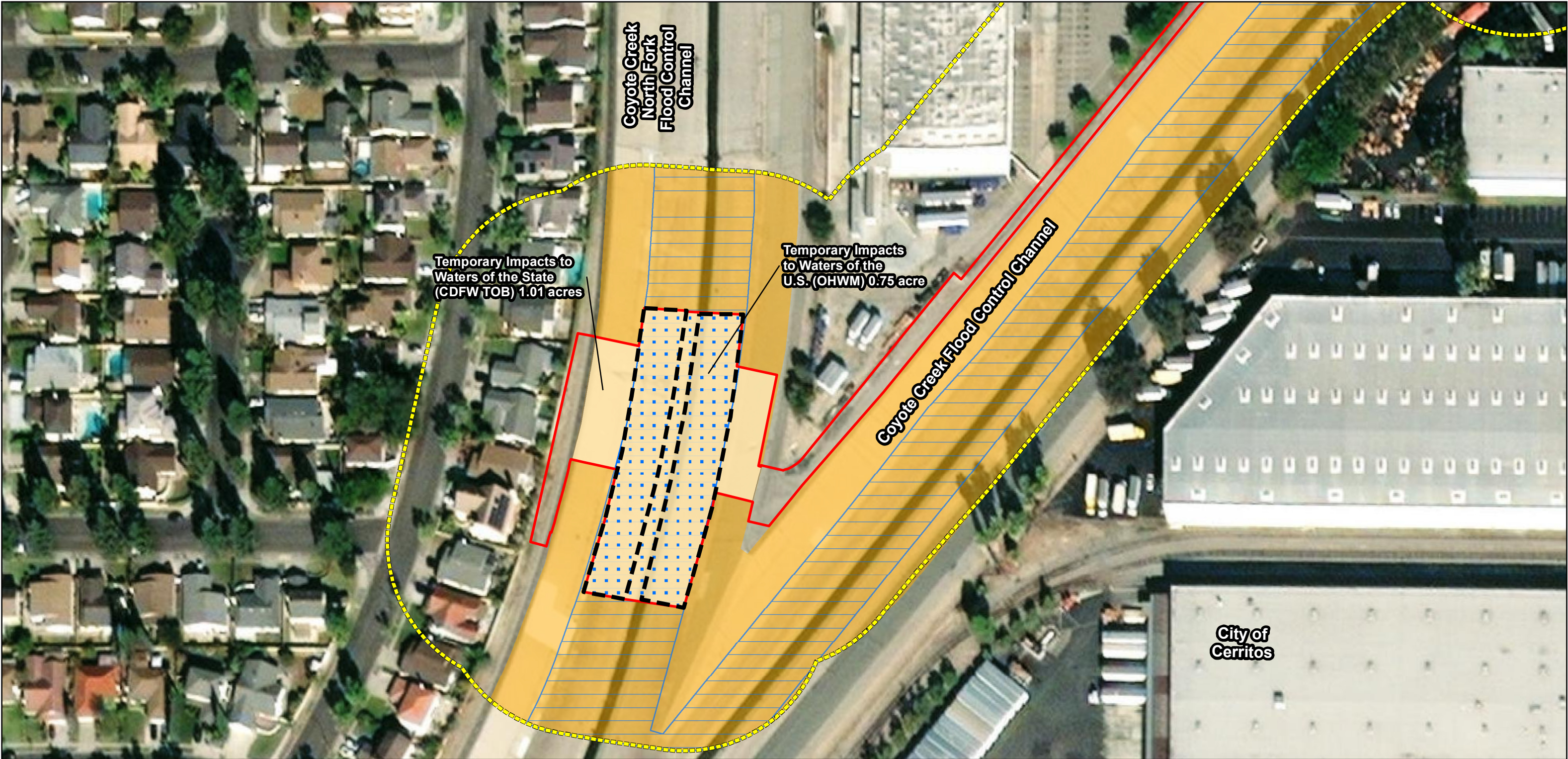
MEMO

DATE: Friday, August 13, 2021

PROJECT #: OC Loop Segments O, P, and Q Coyote Creek Bikeway Project

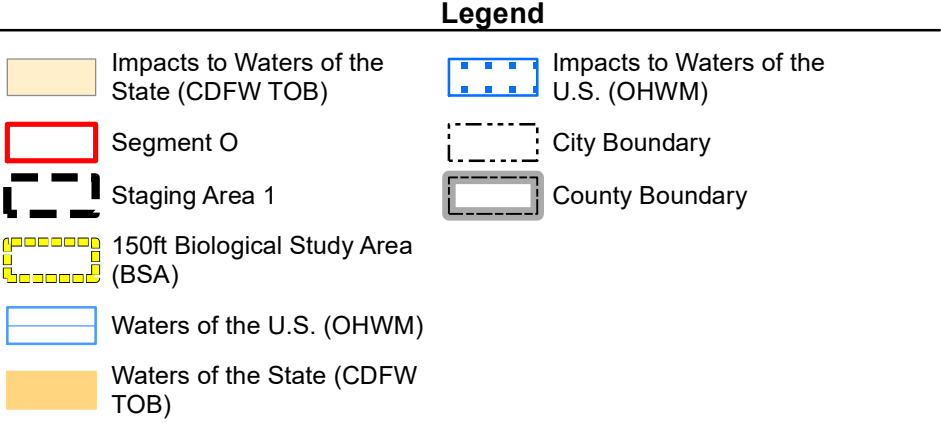
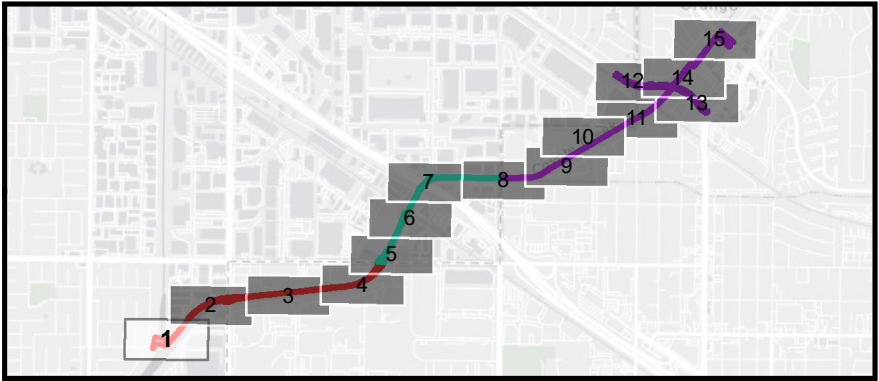
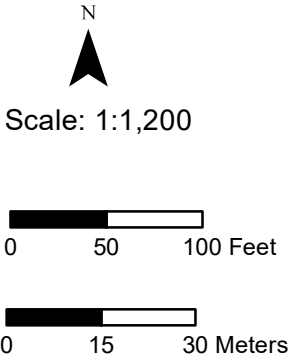
RE: Revised Impacts to Jurisdictional Waters Map for Recirculated
Initial Study and Mitigated Negative Declaration (IS/MND) for the (for 4 specific
crossing locations)

The following attached maps are updated impacts to jurisdictional waters for the project boundary that includes the four new alternative crossing locations.



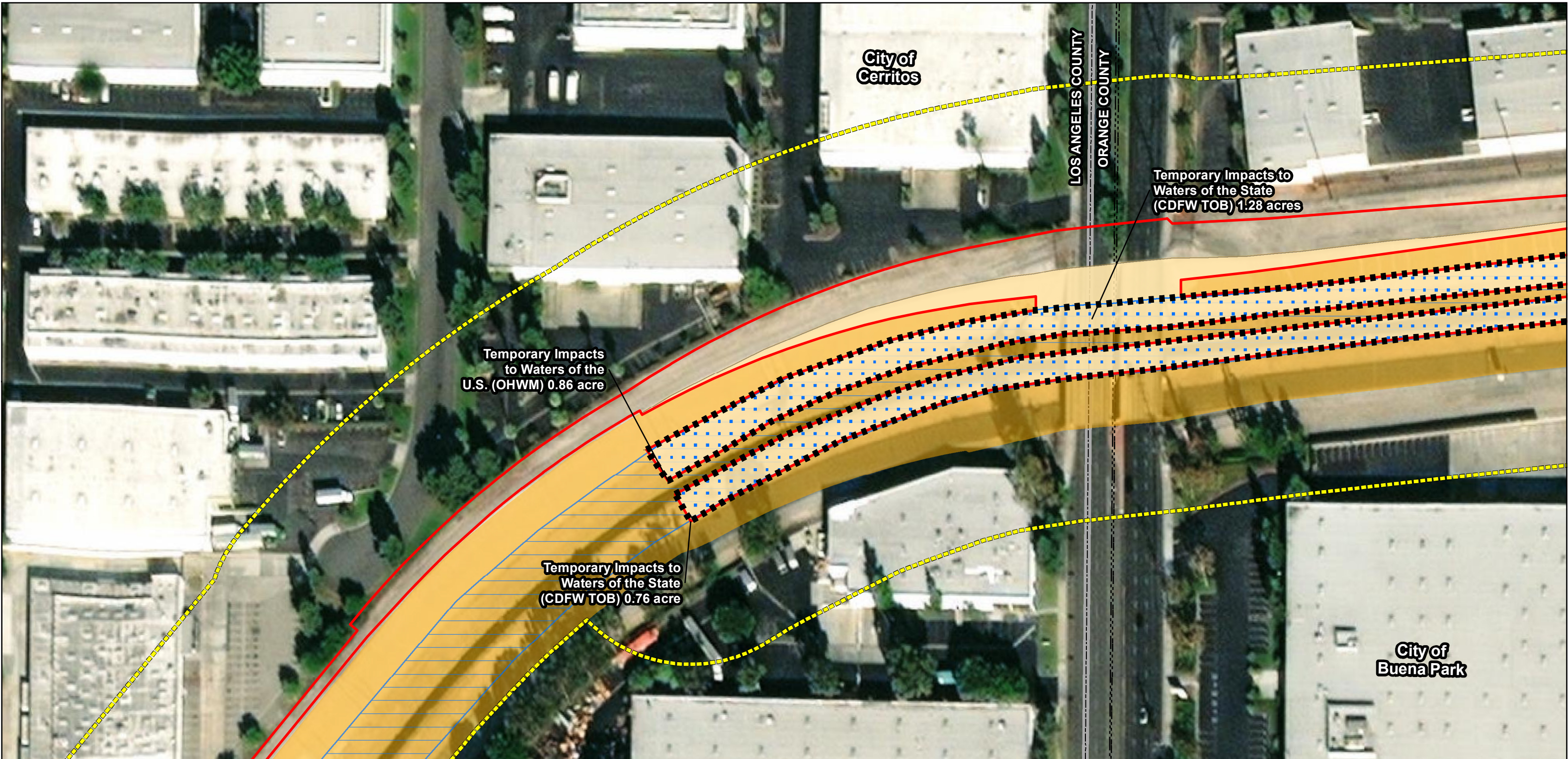
Path: \\GISSVR\gis\Projects\7034_OC_Loop\MXD\BIO\7034_OC_Loop_JD_Impacts_MapBook_11x17_2021_08_13.mxd
Service Layer Credits: Source: Esri, Maxar, GeoEye, Earthstar Geographics, CNES/Airbus DS, USDA, USGS, AeroGRID, IGN, and the GIS User Community, Sources: Esri, HERE, Garmin, USGS, Intermap, INCREMENT P, NRCan, Esri Japan, METI, Esri China (Hong Kong), Esri Korea, Esri (Thailand), NGCC, (c) OpenStreetMap contributors, and the GIS User Community, Esri, HERE, Garmin, (c) OpenStreetMap contributors, and the GIS user community; Orange County, 2018; Mark Thomas, July 2018; GHD, 2020; UltraSystems Environmental, Inc. 2021

August 13, 2021



OC Loop Segments O, P, and Q

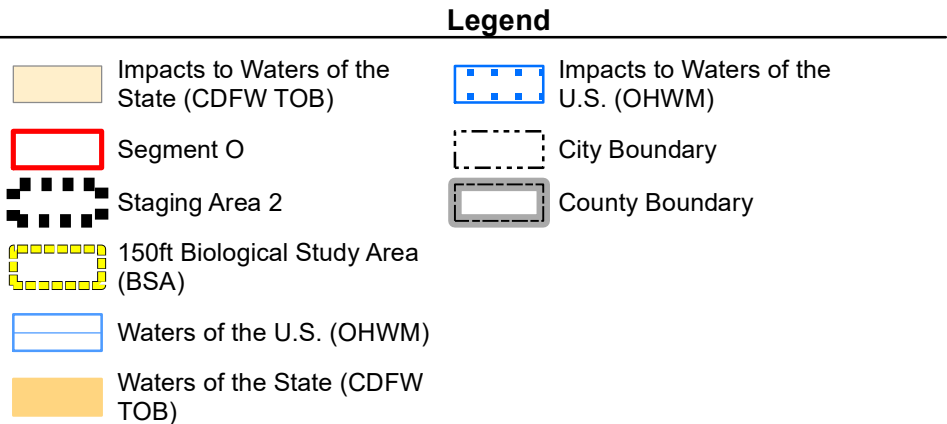
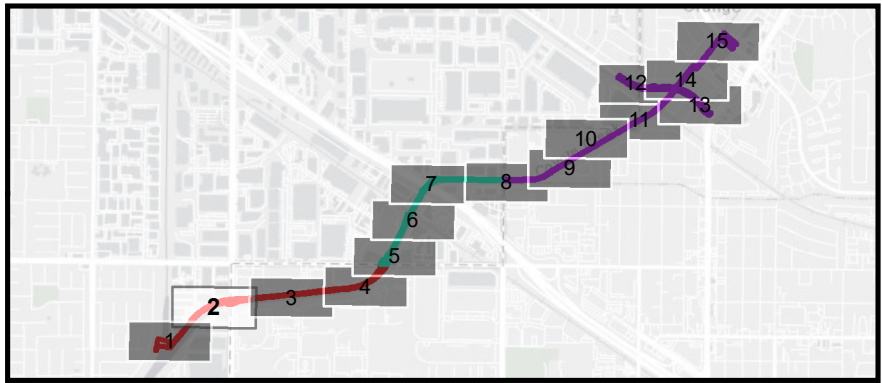
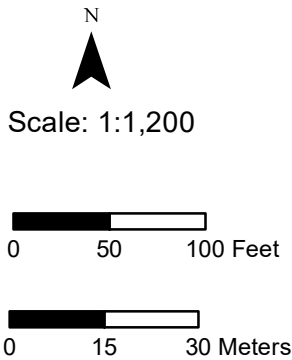
Impacts to
Jurisdictional Waters



Path: \\GISSVR\gis\Projects\7034_OC_Loop\MXD\BIO\7034_OC_Loop_JD_Impacts_MapBook_11x17_2021_08_13.mxd

Service Layer Credits: Source: Esri, Maxar, GeoEye, Earthstar Geographics, CNES/Airbus DS, USDA, USGS, AeroGRID, IGN, and the GIS User Community, Sources: Esri, HERE, Garmin, USGS, Intermap, INCREMENT P, NRCan, Esri Japan, METI, Esri China (Hong Kong), Esri Korea, Esri (Thailand), NGCC, (c) OpenStreetMap contributors, and the GIS User Community, Esri, HERE, Garmin, (c) OpenStreetMap contributors, and the GIS user community; Orange County, 2018; Mark Thomas, July 2018; GHD, 2020; UltraSystems Environmental, Inc. 2021

August 13, 2021



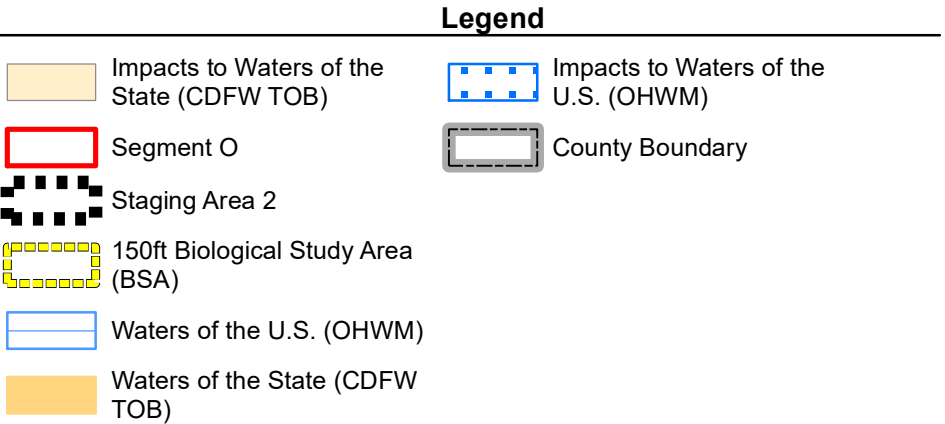
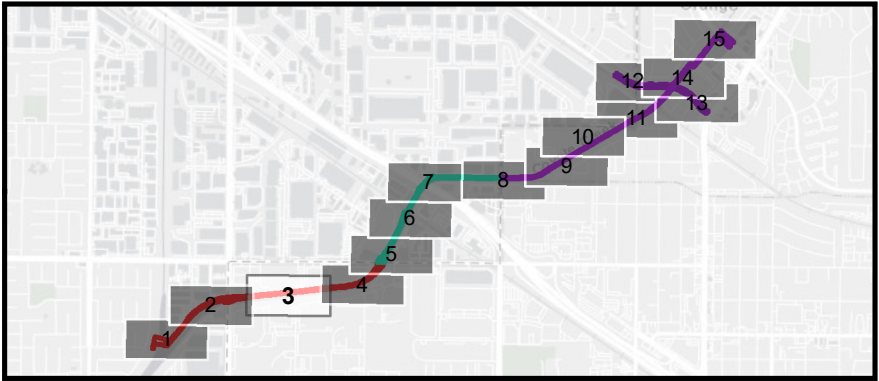
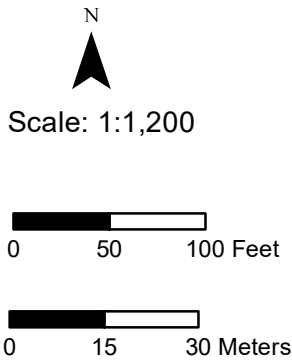
OC Loop Segments O, P, and Q

Impacts to
Jurisdictional Waters



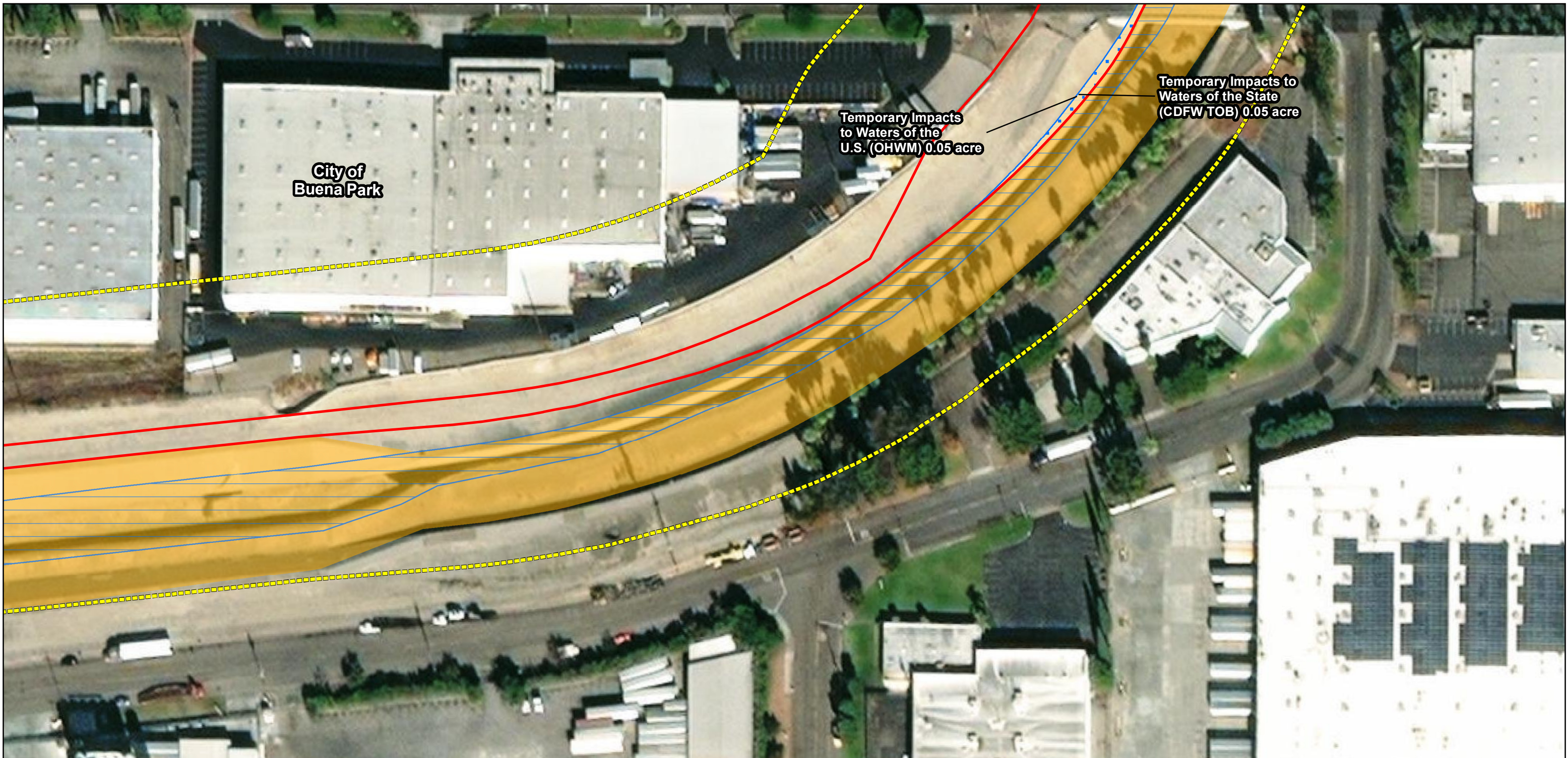
Path: \\GISSVR\gis\Projects\7034_OC_Loop\MXD\BIO\7034_OC_Loop_JD_Impacts_MapBook_11x17_2021_08_13.mxd
Service Layer Credits: Source: Esri, Maxar, GeoEye, Earthstar Geographics, CNES/Airbus DS, USDA, USGS, AeroGRID, IGN, and the GIS User Community, Sources: Esri, HERE, Garmin, USGS, Intermap, INCREMENT P, NRCan, Esri Japan, METI, Esri China (Hong Kong), Esri Korea, Esri (Thailand), NGCC, (c) OpenStreetMap contributors, and the GIS User Community, Esri, HERE, Garmin, (c) OpenStreetMap contributors, and the GIS user community; Orange County, 2018; Mark Thomas, July 2018; GHD, 2020; UltraSystems Environmental, Inc. 2021

August 13, 2021



**OC Loop
Segments O, P, and Q**

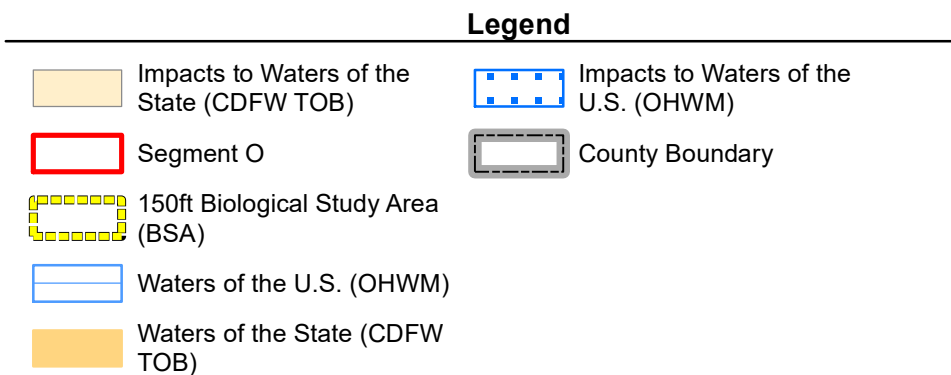
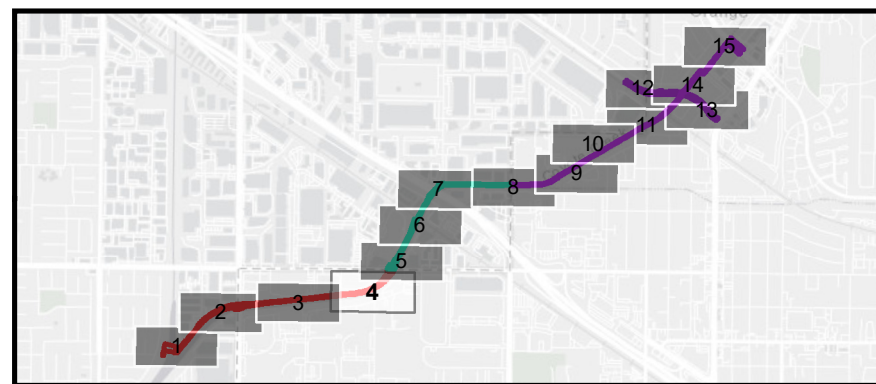
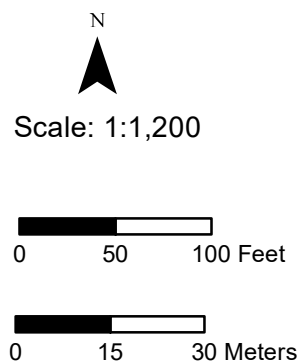
Impacts to
Jurisdictional Waters



Path: \\GISSVR\gis\Projects\7034_OC_Loop\MXD\BIO\7034_OC_Loop_JD_Impacts_MapBook_11x17_2021_08_13.mxd

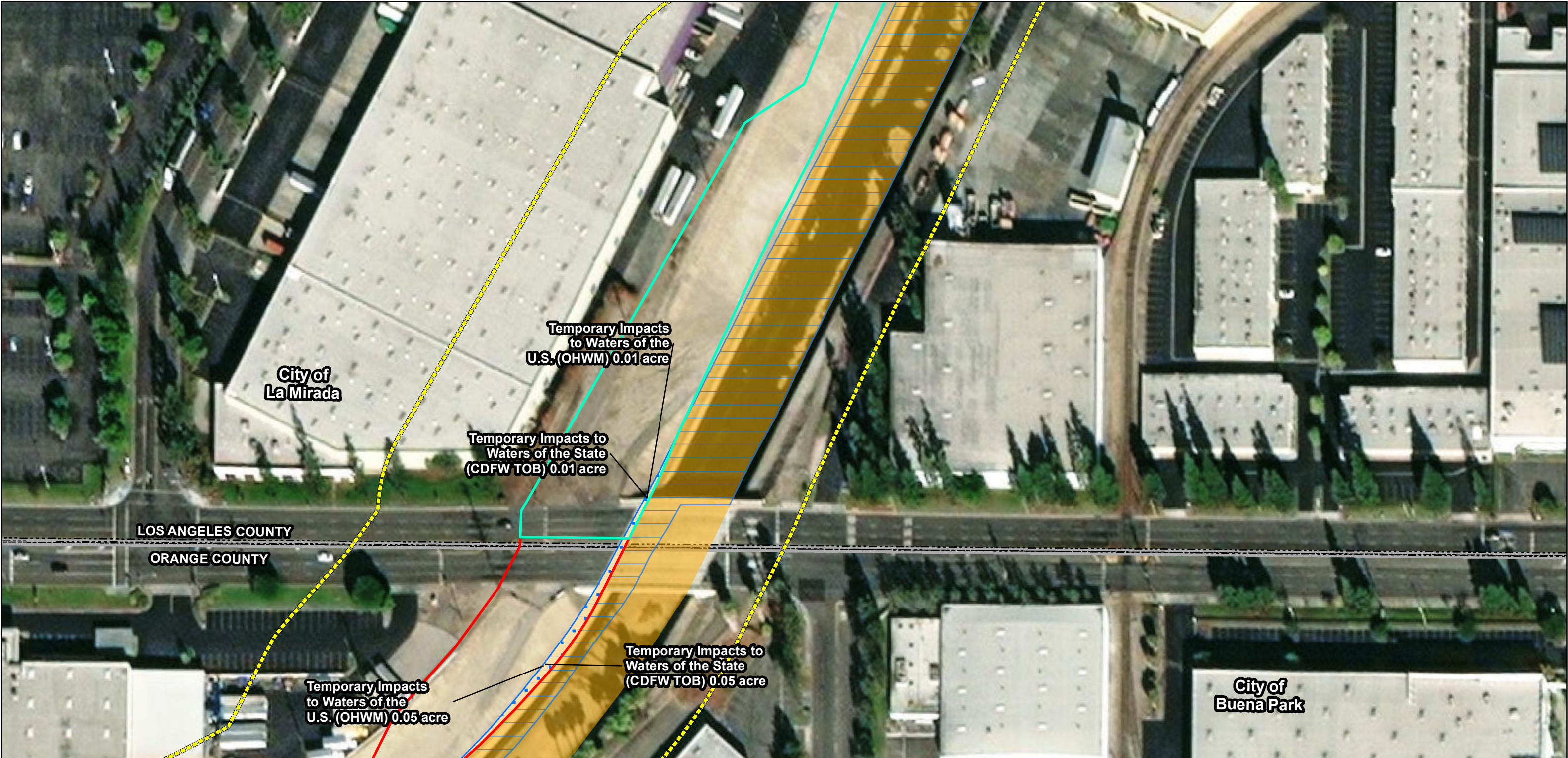
Service Layer Credits: Source: Esri, Maxar, GeoEye, Earthstar Geographics, CNES/Airbus DS, USDA, USGS, AeroGRID, IGN, and the GIS User Community, Sources: Esri, HERE, Garmin, USGS, Intermap, INCREMENT P, NRCan, Esri Japan, METI, Esri China (Hong Kong), Esri Korea, Esri (Thailand), NGCC, (c) OpenStreetMap contributors, and the GIS User Community, Esri, HERE, Garmin, (c) OpenStreetMap contributors, and the GIS user community; Orange County, 2018; Mark Thomas, July 2018; GHD, 2020; UltraSystems Environmental, Inc. 2021

August 13, 2021



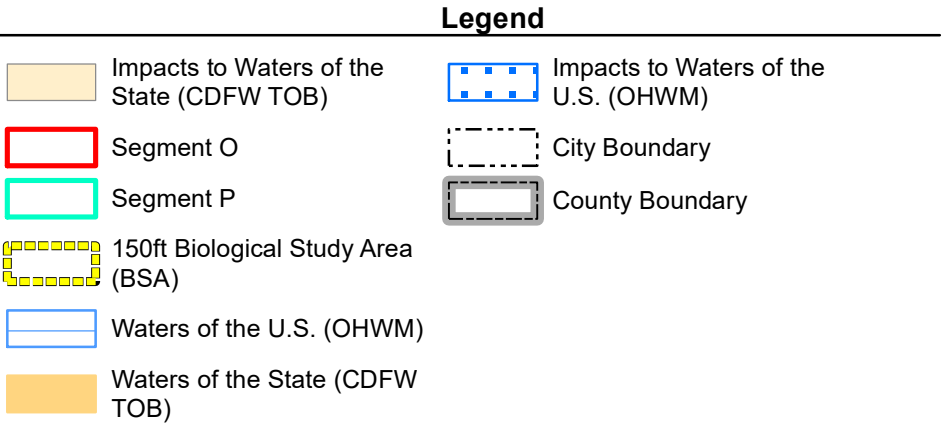
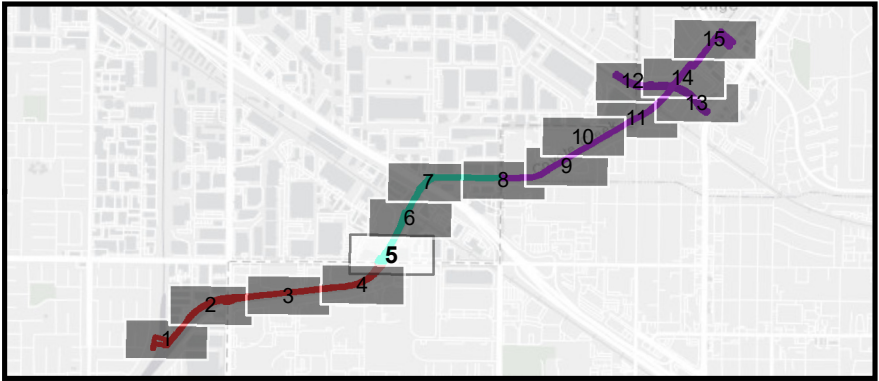
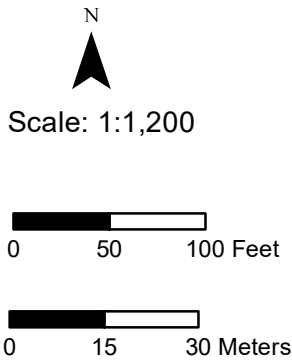
OC Loop Segments O, P, and Q

Impacts to
Jurisdictional Waters



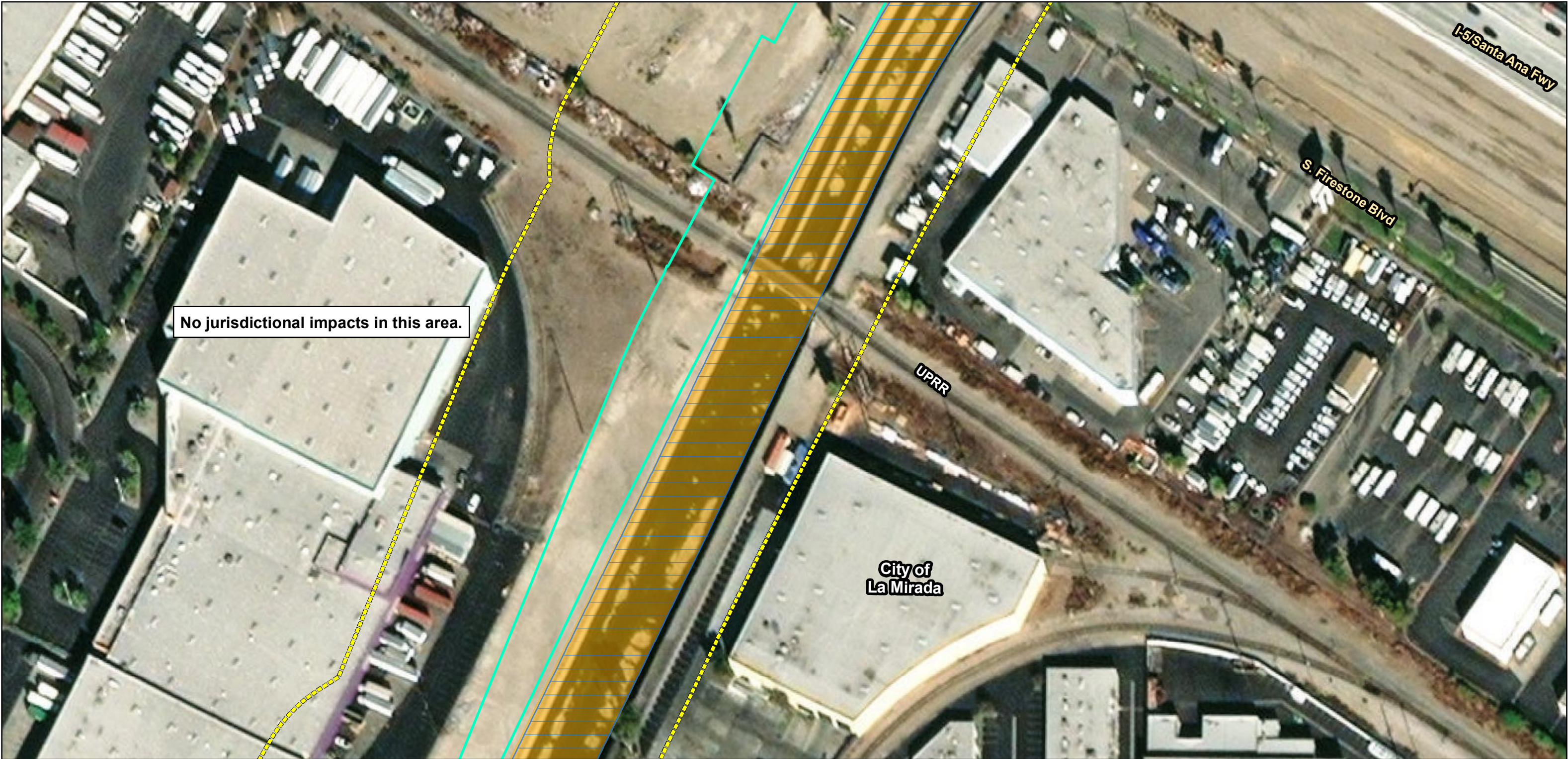
Path: \\GISSVR\gis\Projects\7034_OC_Loop\MXD\BIO\7034_OC_Loop_JD_Impacts_MapBook_11x17_2021_08_13.mxd
Service Layer Credits: Source: Esri, Maxar, GeoEye, Earthstar Geographics, CNES/Airbus DS, USDA, USGS, AeroGRID, IGN, and the GIS User Community, Sources: Esri, HERE, Garmin, USGS, Intermap, INCREMENT P, NRCan, Esri Japan, METI, Esri China (Hong Kong), Esri Korea, Esri (Thailand), NGCC, (c) OpenStreetMap contributors, and the GIS User Community, Esri, HERE, Garmin, (c) OpenStreetMap contributors, and the GIS user community; Orange County, 2018; Mark Thomas, July 2018; GHD, 2020; UltraSystems Environmental, Inc. 2021

August 13, 2021



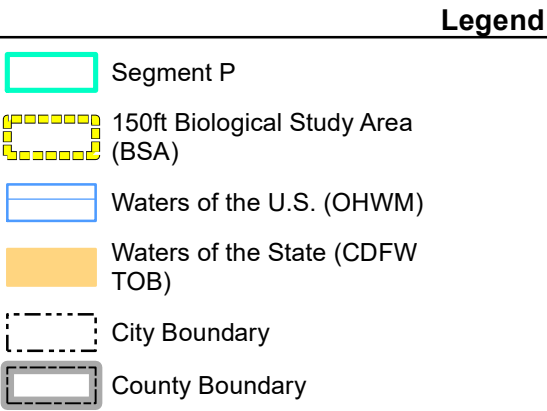
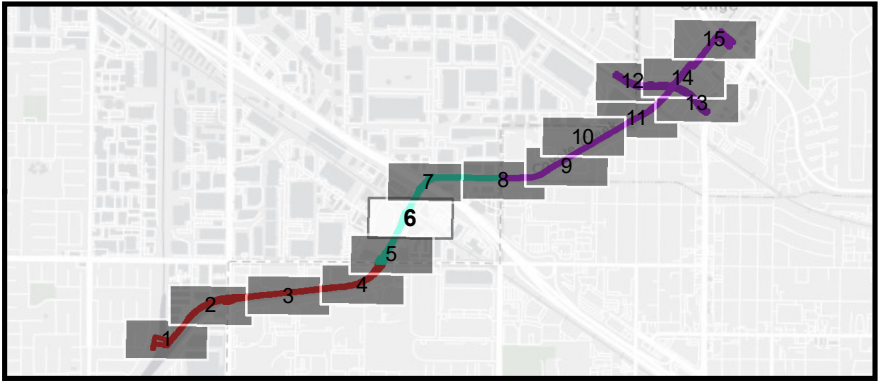
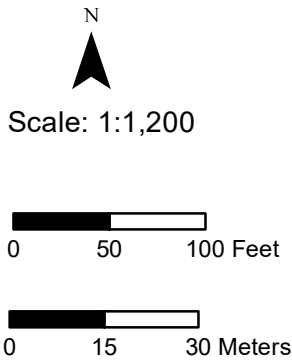
**OC Loop
Segments O, P, and Q**

Impacts to
Jurisdictional Waters



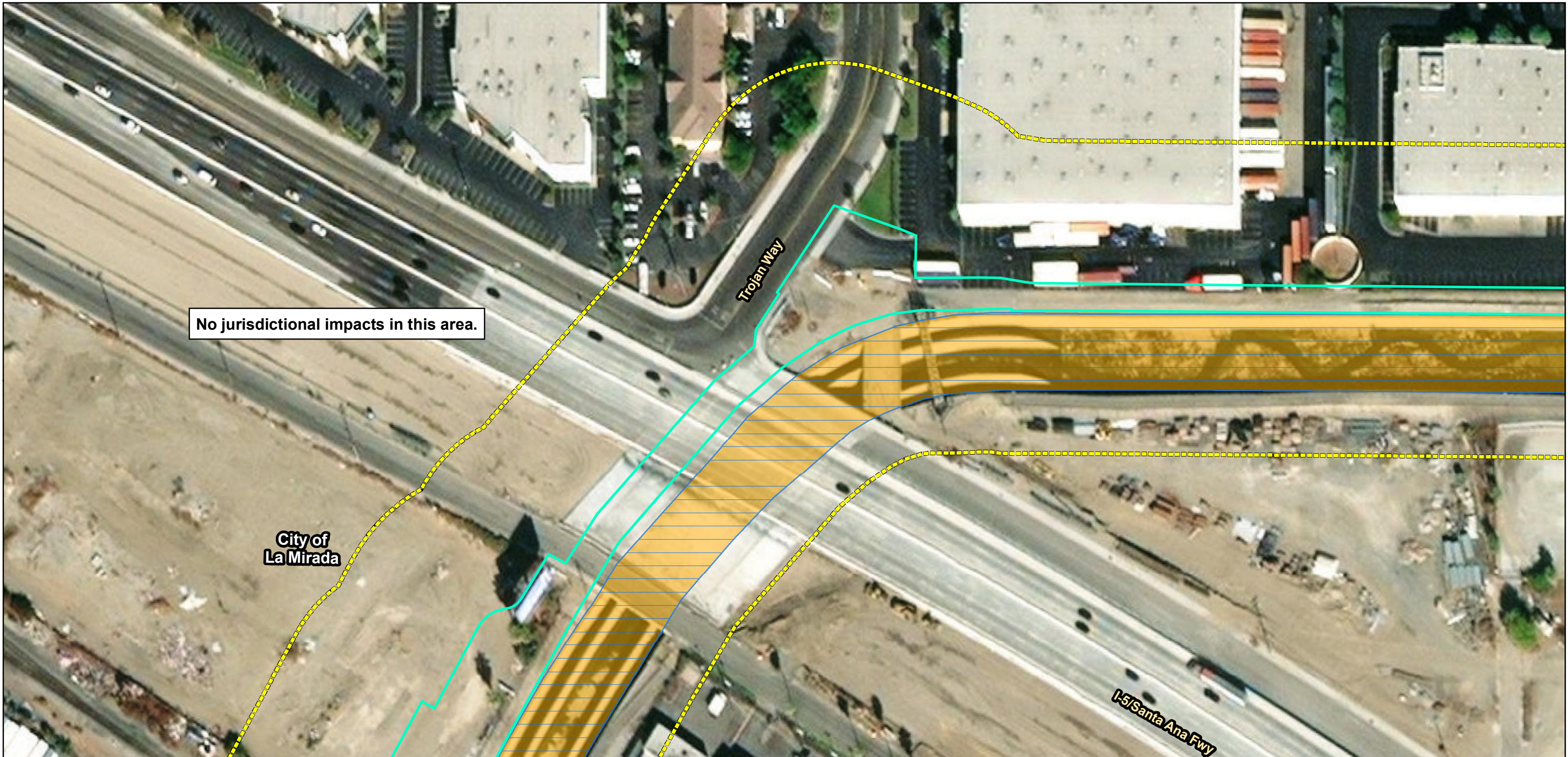
Path: \\GISSVR\gis\Projects\7034_OC_Loop\MXD\BIO\7034_OC_Loop_JD_Impacts_MapBook_11x17_2021_08_13.mxd
Service Layer Credits: Source: Esri, Maxar, GeoEye, Earthstar Geographics, CNES/Airbus DS, USDA, USGS, AeroGRID, IGN, and the GIS User Community, Sources: Esri, HERE, Garmin, USGS, Intermap, INCREMENT P, NRCan, Esri Japan, METI, Esri China (Hong Kong), Esri Korea, Esri (Thailand), NGCC, (c) OpenStreetMap contributors, and the GIS User Community, Esri, HERE, Garmin, (c) OpenStreetMap contributors, and the GIS user community; Orange County, 2018; Mark Thomas, July 2018; GHD, 2020; UltraSystems Environmental, Inc. 2021

August 13, 2021



**OC Loop
Segments O, P, and Q**

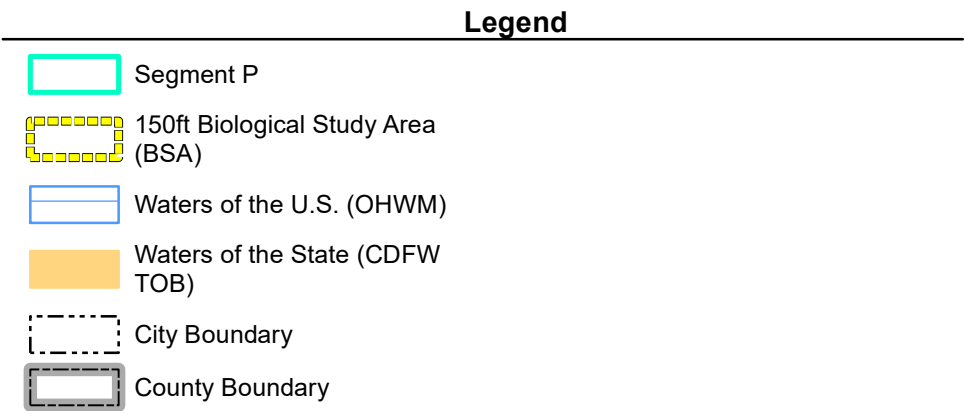
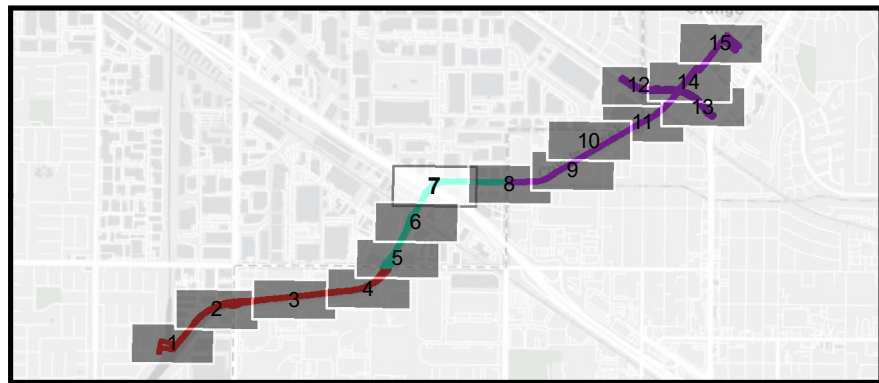
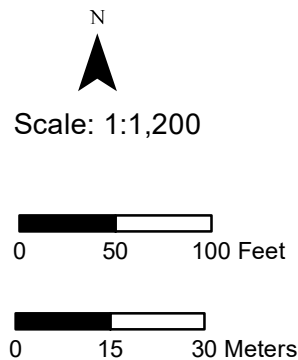
Impacts to
Jurisdictional Waters



Path: \\GISSVR\gis\Projects\7034_OC_Loop\MXD\BIO\7034_OC_Loop_JD_Impacts_MapBook_11x17_2021_08_13.mxd

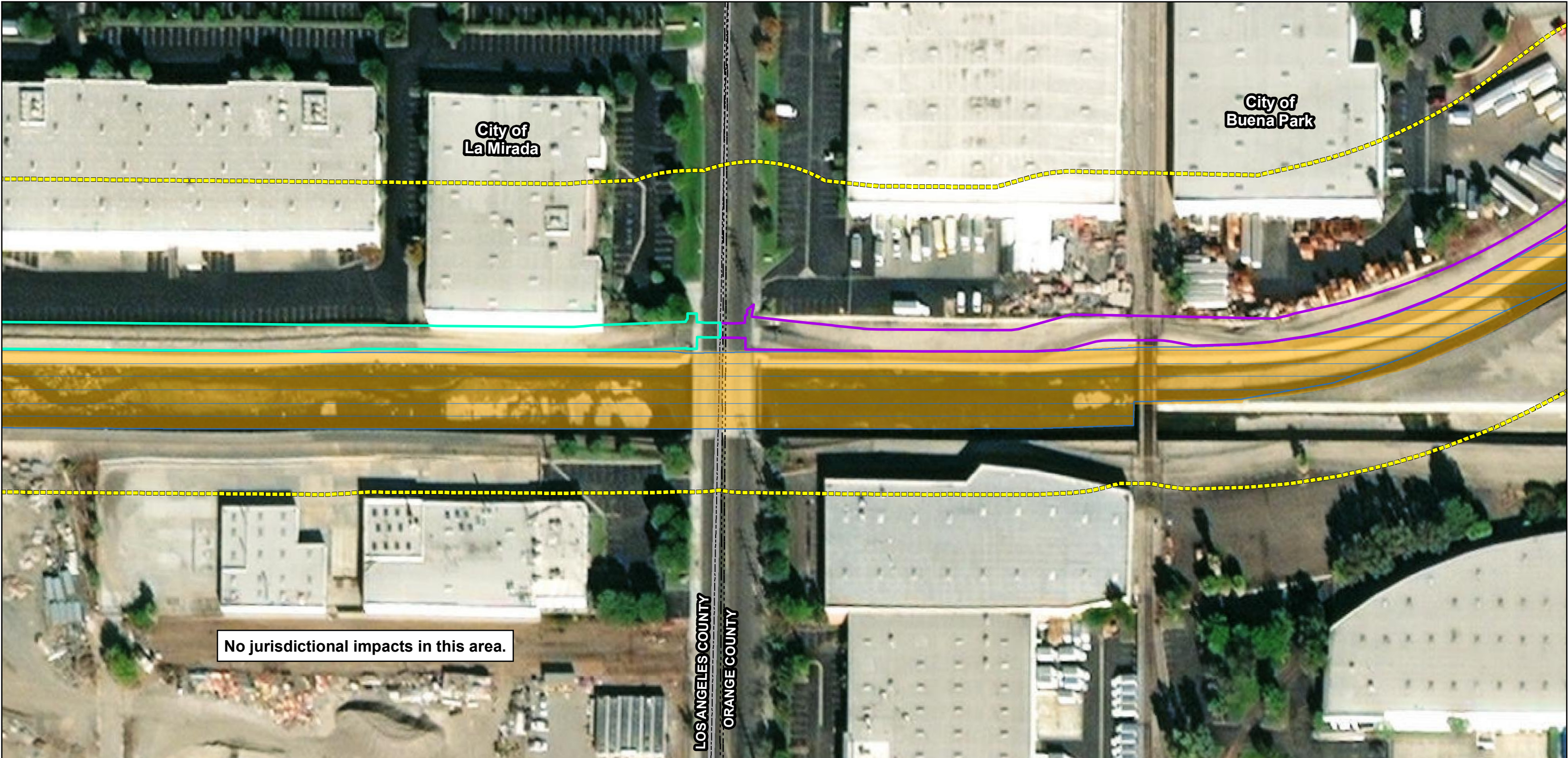
Service Layer Credits: Source: Esri, Maxar, GeoEye, Earthstar Geographics, CNES/Airbus DS, USDA, USGS, AeroGRID, IGN, and the GIS User Community, Sources: Esri, HERE, Garmin, USGS, Intermap, INCREMENT P, NRCan, Esri Japan, METI, Esri China (Hong Kong), Esri Korea, Esri (Thailand), NGCC, (c) OpenStreetMap contributors, and the GIS User Community, Esri, HERE, Garmin, (c) OpenStreetMap contributors, and the GIS user community; Orange County, 2018; Mark Thomas, July 2018; GHD, 2020; UltraSystems Environmental, Inc. 2021

August 13, 2021



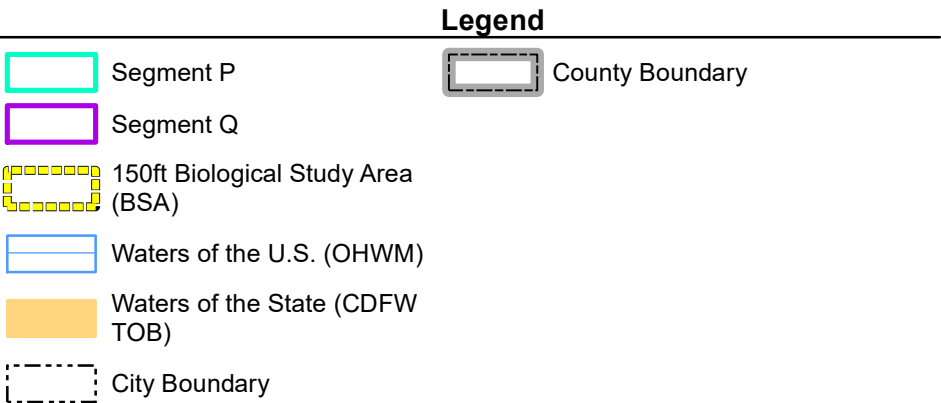
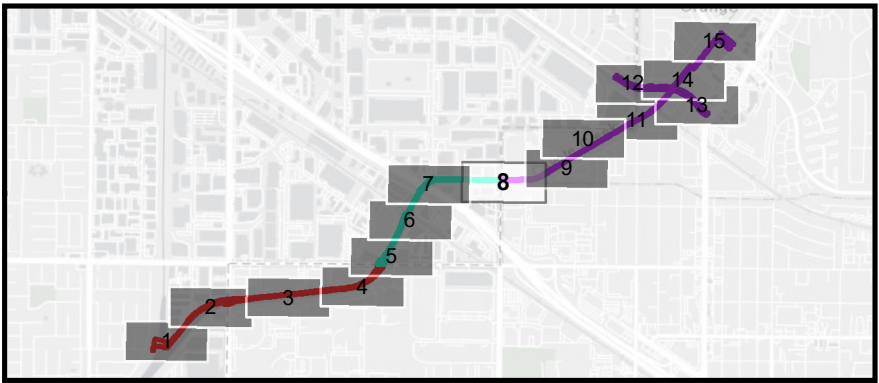
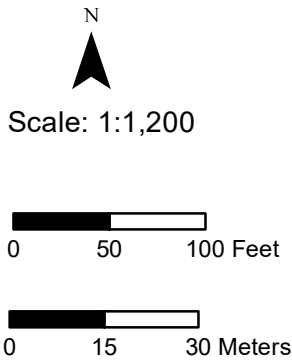
**OC Loop
Segments O, P, and Q**

Impacts to
Jurisdictional Waters



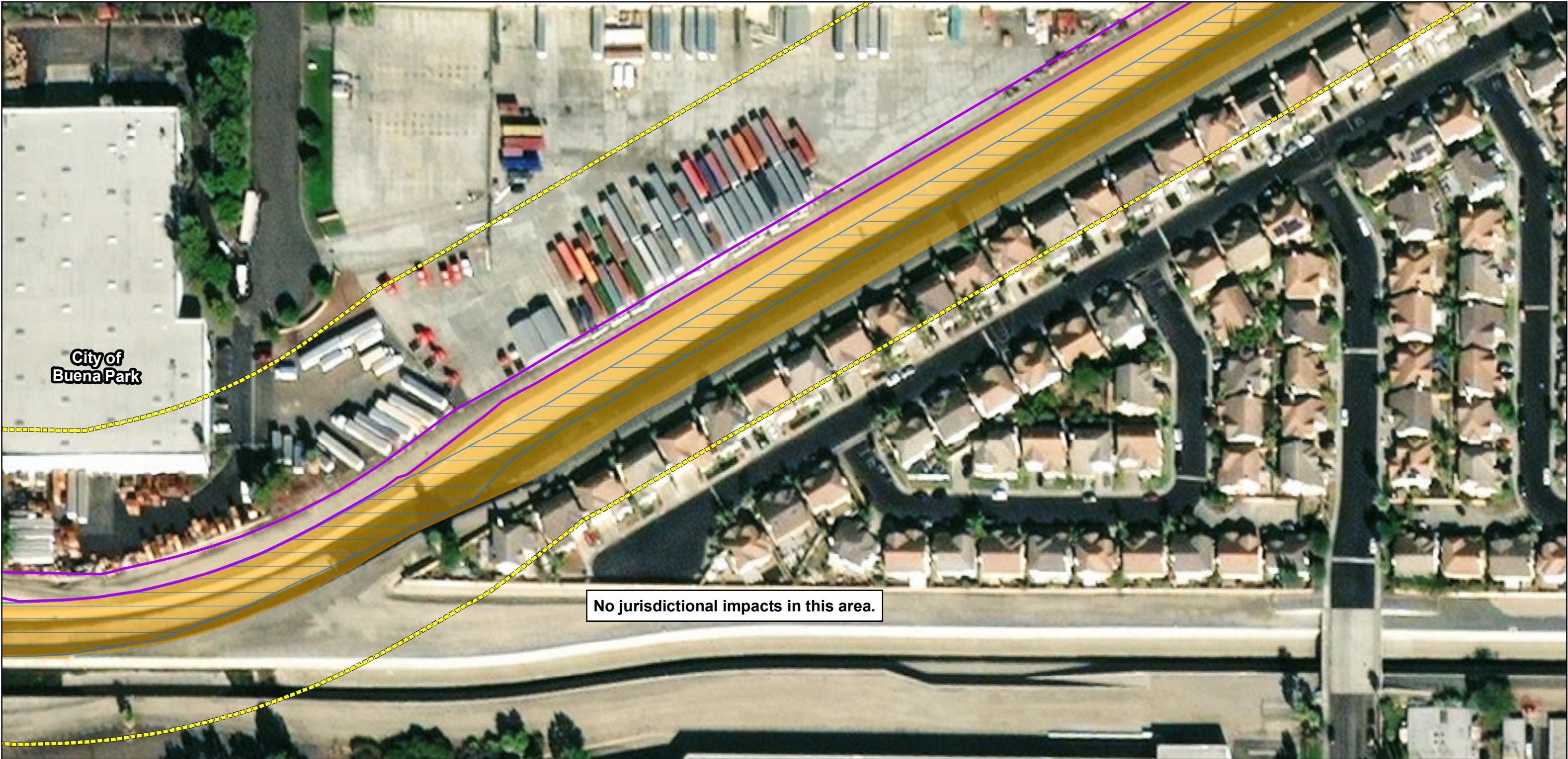
Path: \\GISSVR\gis\Projects\7034_OC_Loop\MXD\BIO\7034_OC_Loop_JD_Impacts_MapBook_11x17_2021_08_13.mxd
Service Layer Credits: Source: Esri, Maxar, GeoEye, Earthstar Geographics, CNES/Airbus DS, USDA, USGS, AeroGRID, IGN, and the GIS User Community, Sources: Esri, HERE, Garmin, USGS, Intermap, INCREMENT P, NRCan, Esri Japan, METI, Esri China (Hong Kong), Esri Korea, Esri (Thailand), NGCC, (c) OpenStreetMap contributors, and the GIS User Community, Esri, HERE, Garmin, (c) OpenStreetMap contributors, and the GIS user community; Orange County, 2018; Mark Thomas, July 2018; GHD, 2020; UltraSystems Environmental, Inc. 2021

August 13, 2021



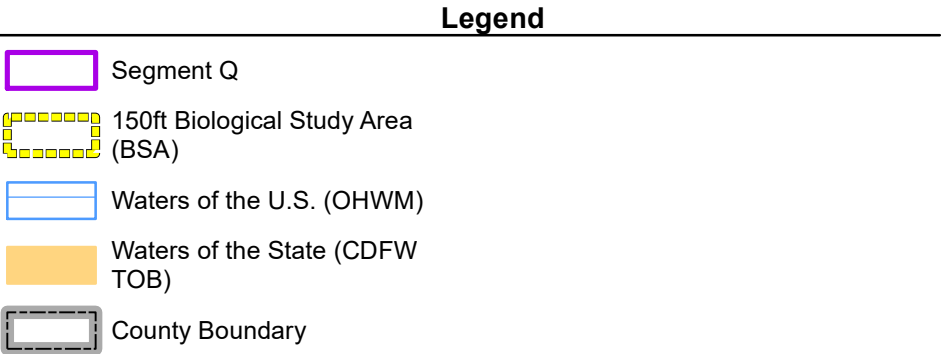
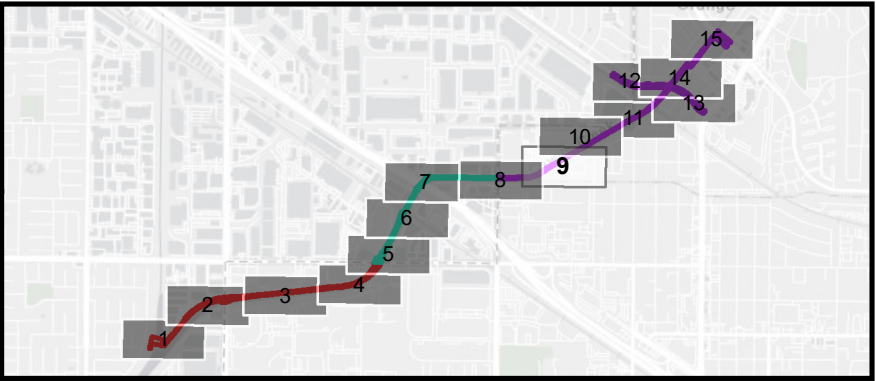
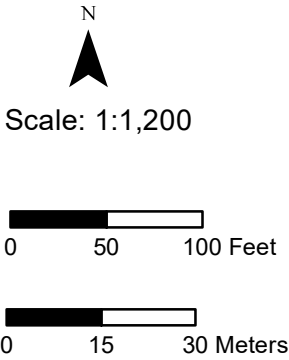
**OC Loop
Segments O, P, and Q**

Impacts to
Jurisdictional Waters



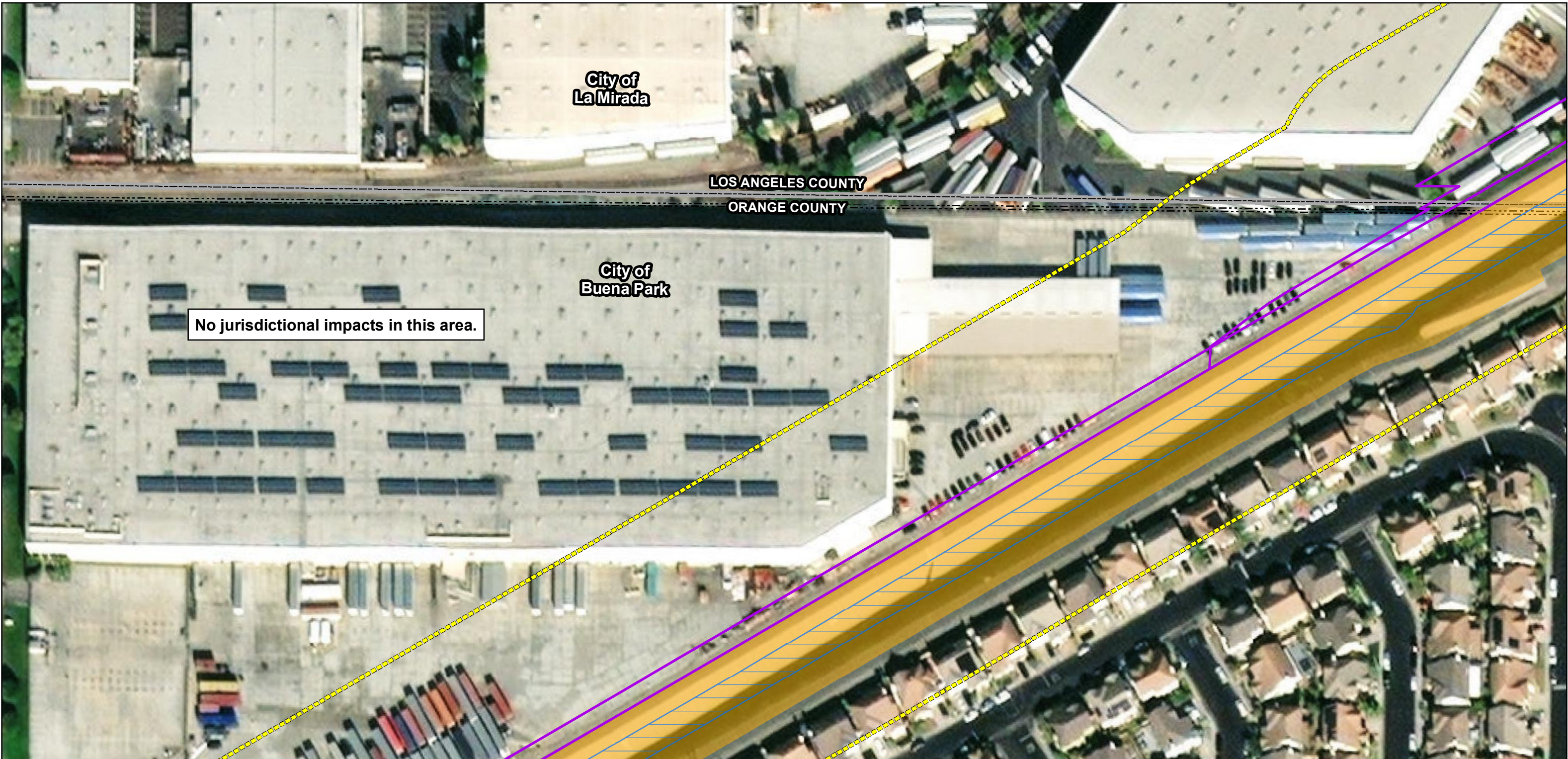
Path: \\GISSVR\gis\Projects\7034_OC_Loop\MXD\BIO\7034_OC_Loop_JD_Impacts_MapBook_11x17_2021_08_13.mxd
Service Layer Credits: Source: Esri, Maxar, GeoEye, Earthstar Geographics, CNES/Airbus DS, USDA, USGS, AeroGRID, IGN, and the GIS User Community, Sources: Esri, HERE, Garmin, USGS, Intermap, INCREMENT P, NRCan, Esri Japan, METI, Esri China (Hong Kong), Esri Korea, Esri (Thailand), NGCC, (c) OpenStreetMap contributors, and the GIS User Community, Esri, HERE, Garmin, (c) OpenStreetMap contributors, and the GIS user community; Orange County, 2018; Mark Thomas, July 2018; GHD, 2020; UltraSystems Environmental, Inc. 2021

August 13, 2021



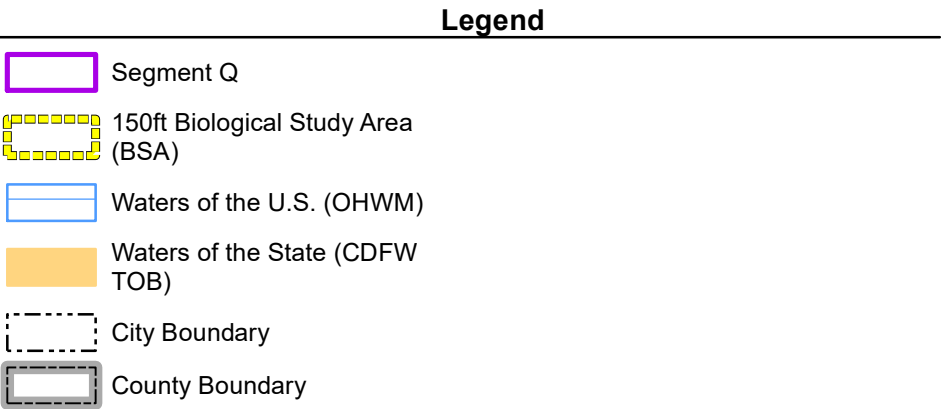
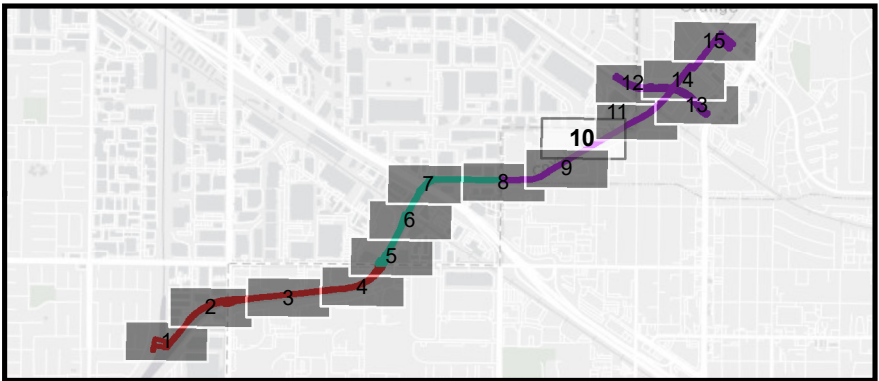
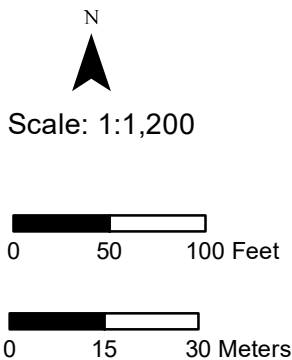
**OC Loop
Segments O, P, and Q**

Impacts to
Jurisdictional Waters



Path: \\GISSVR\gis\Projects\7034_OC_Loop\MXD\BIO\7034_OC_Loop_JD_Impacts_MapBook_11x17_2021_08_13.mxd
Service Layer Credits: Source: Esri, Maxar, GeoEye, Earthstar Geographics, CNES/Airbus DS, USDA, USGS, AeroGRID, IGN, and the GIS User Community, Sources: Esri, HERE, Garmin, USGS, Intermap, INCREMENT P, NRCan, Esri Japan, METI, Esri China (Hong Kong), Esri Korea, Esri (Thailand), NGCC, (c) OpenStreetMap contributors, and the GIS User Community, Esri, HERE, Garmin, (c) OpenStreetMap contributors, and the GIS user community; Orange County, 2018; Mark Thomas, July 2018; GHD, 2020; UltraSystems Environmental, Inc. 2021

August 13, 2021



**OC Loop
Segments O, P, and Q**

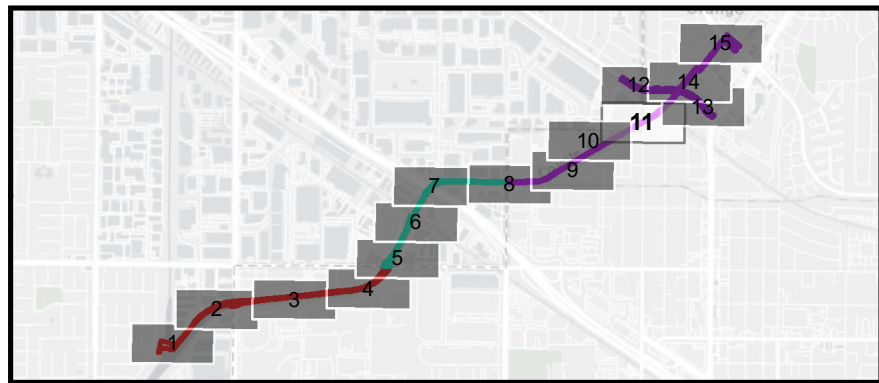
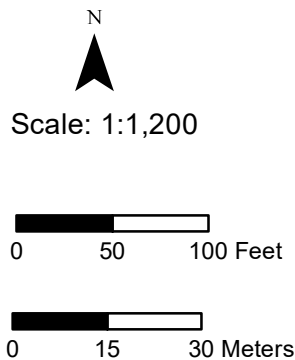
Impacts to
Jurisdictional Waters



Path: \\GISSVR\gis\Projects\7034_OC_Loop\MXD\BIO\7034_OC_Loop_JD_Impacts_MapBook_11x17_2021_08_13.mxd

Service Layer Credits: Source: Esri, Maxar, GeoEye, Earthstar Geographics, CNES/Airbus DS, USDA, USGS, AeroGRID, IGN, and the GIS User Community, Sources: Esri, HERE, Garmin, USGS, Intermap, INCREMENT P, NRCan, Esri Japan, METI, Esri China (Hong Kong), Esri Korea, Esri (Thailand), NGCC, (c) OpenStreetMap contributors, and the GIS User Community, Esri, HERE, Garmin, (c) OpenStreetMap contributors, and the GIS user community; Orange County, 2018; Mark Thomas, July 2018; GHD, 2020; UltraSystems Environmental, Inc. 2021

August 13, 2021



Legend	
Impacts to Waters of the State (CDFW TOB)	Impacts to Waters of the U.S. (OHWM)
Segment Q	City Boundary
150ft Biological Study Area (BSA)	County Boundary
Waters of the U.S. (OHWM)	
Waters of the State (CDFW TOB)	

OC Loop Segments O, P, and Q

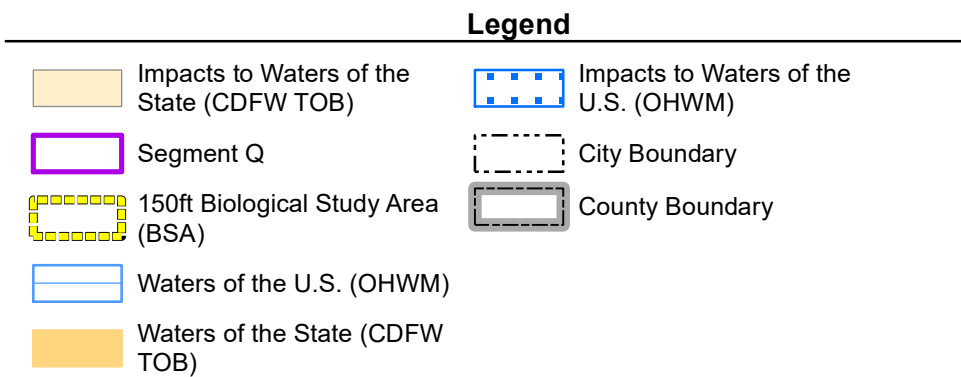
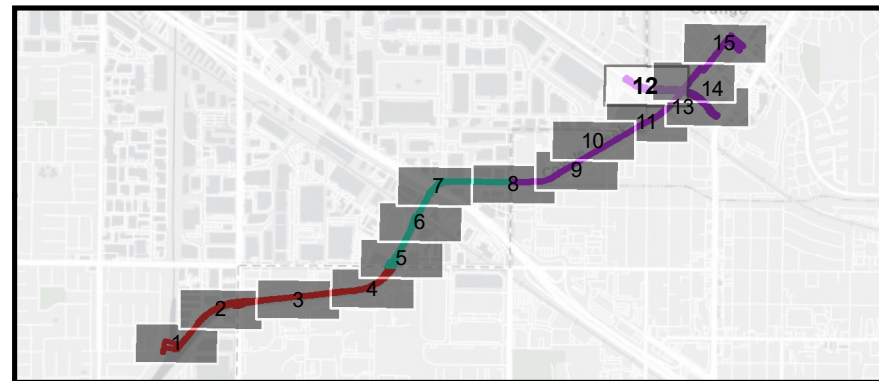
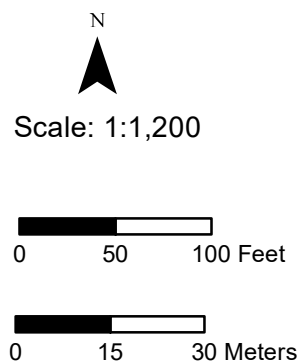
Impacts to Jurisdictional Waters



Path: \\GISSVR\gis\Projects\7034_OC_Loop\MXD\BIO\7034_OC_Loop_JD_Impacts_MapBook_11x17_2021_08_13.mxd

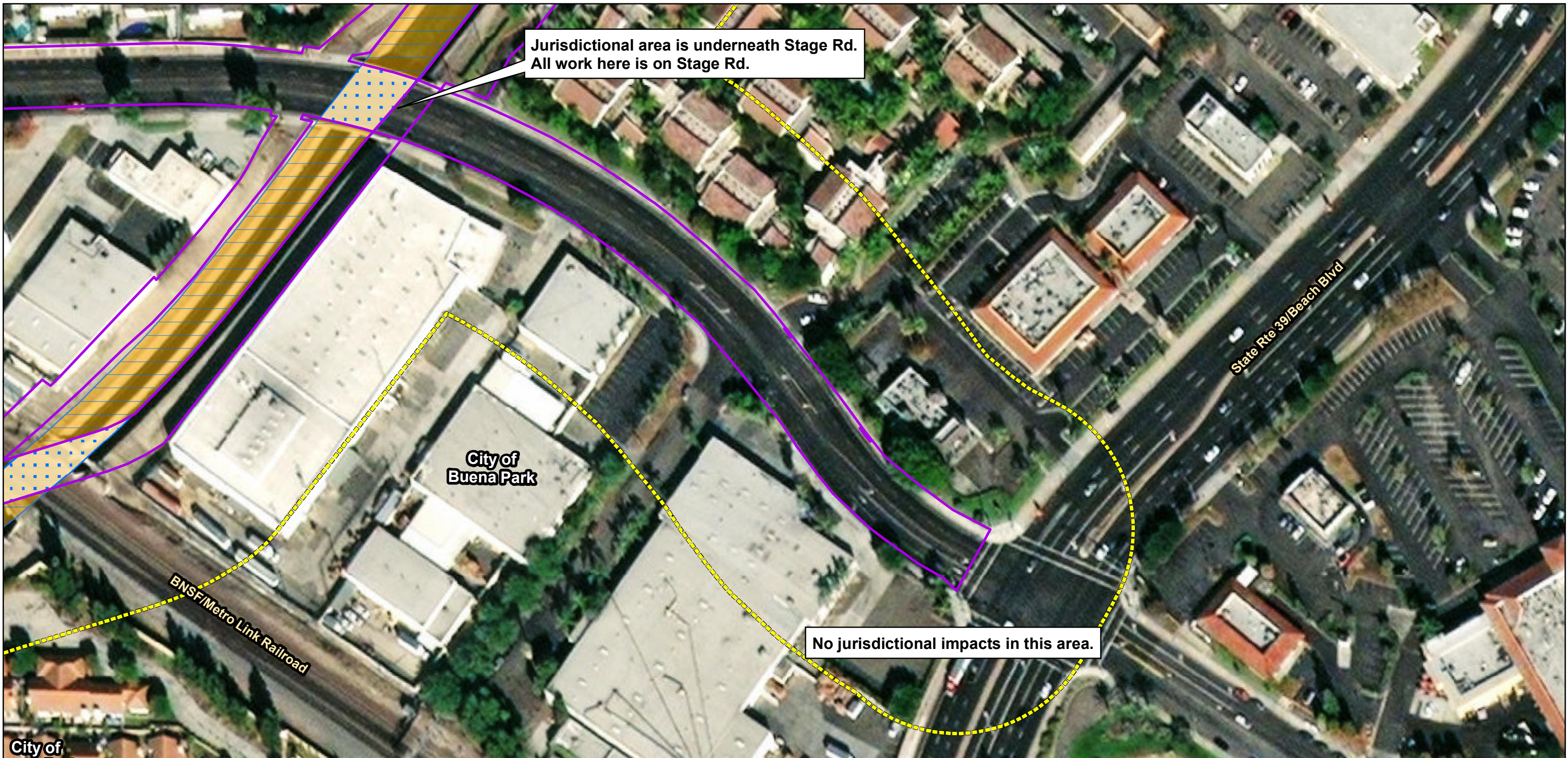
Service Layer Credits: Source: Esri, Maxar, GeoEye, Earthstar Geographics, CNES/Airbus DS, USDA, USGS, AeroGRID, IGN, and the GIS User Community, Sources: Esri, HERE, Garmin, USGS, Intermap, INCREMENT P, NRCan, Esri Japan, METI, Esri China (Hong Kong), Esri Korea, Esri (Thailand), NGCC, (c) OpenStreetMap contributors, and the GIS User Community, Esri, HERE, Garmin, (c) OpenStreetMap contributors, and the GIS user community; Orange County, 2018; Mark Thomas, July 2018; GHD, 2020; UltraSystems Environmental, Inc. 2021

August 13, 2021



OC Loop Segments O, P, and Q

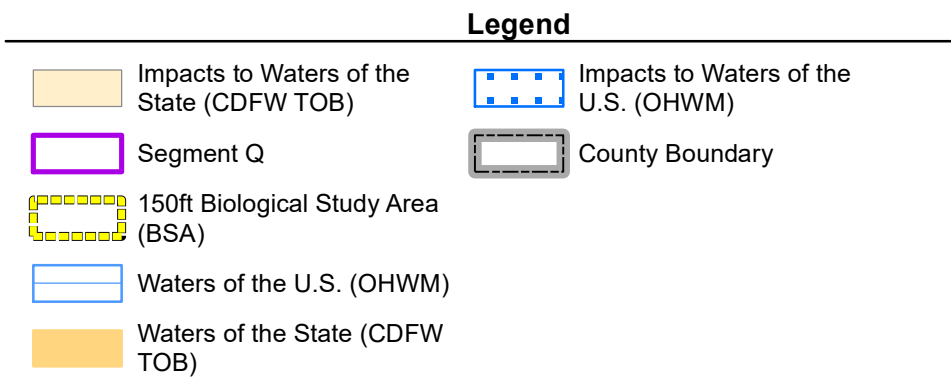
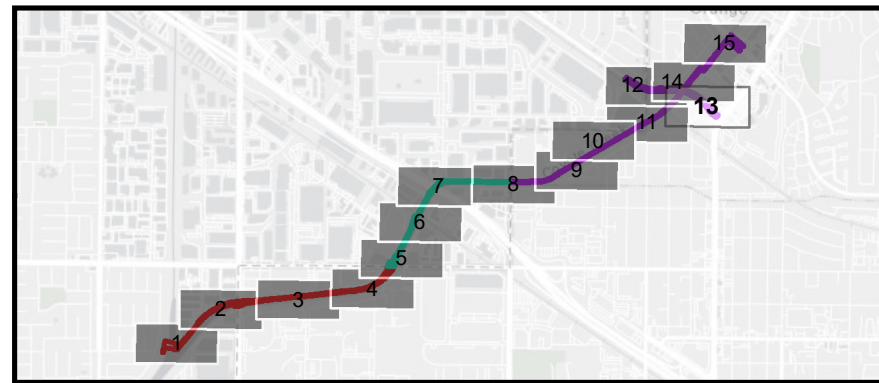
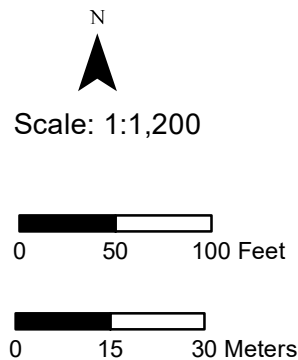
Impacts to Jurisdictional Waters



Path: \\GISSVR\gis\Projects\7034_OC_Loop\MXD\BIO\7034_OC_Loop_JD_Impacts_MapBook_11x17_2021_08_13.mxd

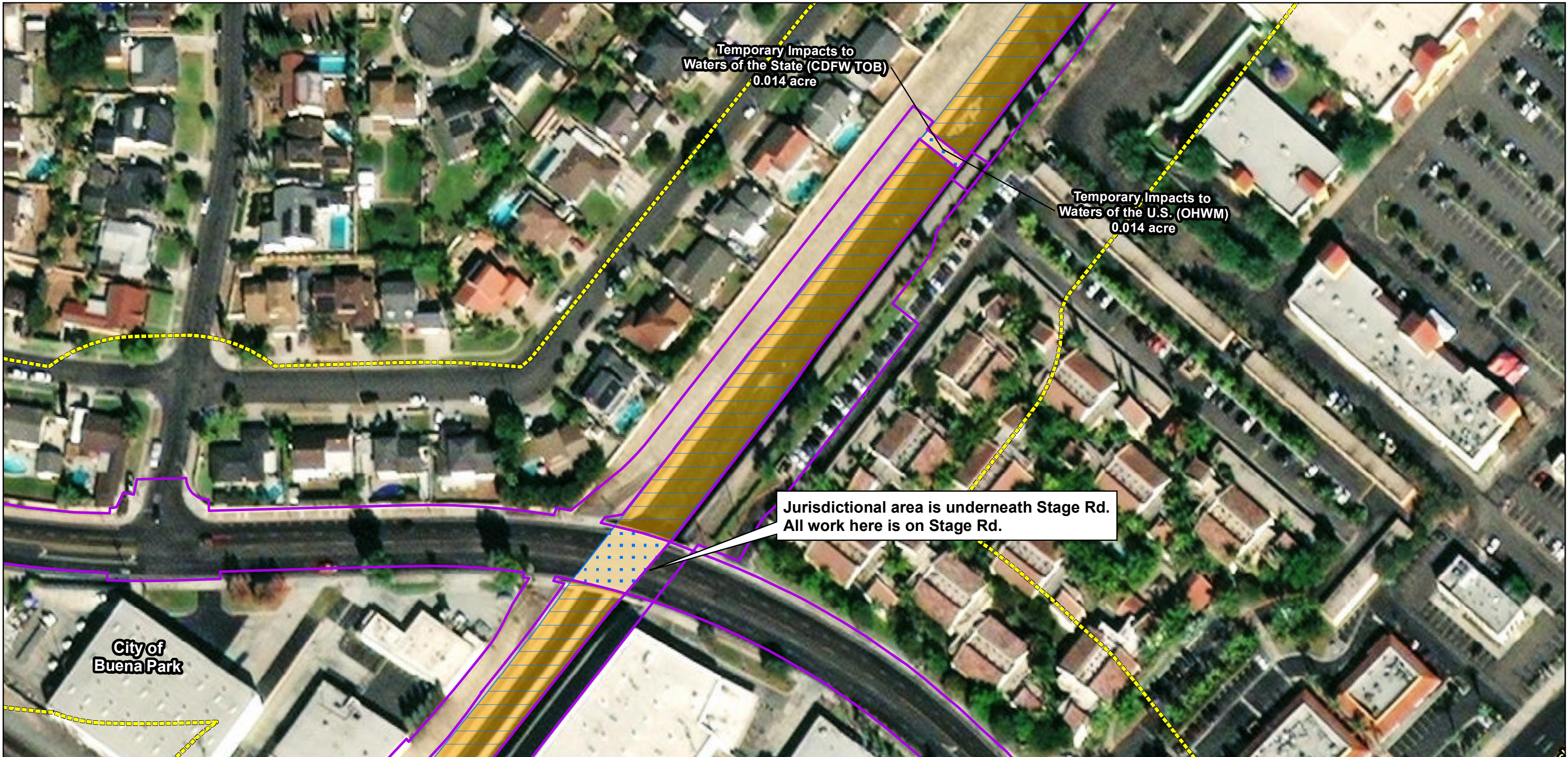
Service Layer Credits: Source: Esri, Maxar, GeoEye, Earthstar Geographics, CNES/Airbus DS, USDA, USGS, AeroGRID, IGN, and the GIS User Community, Sources: Esri, HERE, Garmin, USGS, Intermap, INCREMENT P, NRCan, Esri Japan, METI, Esri China (Hong Kong), Esri Korea, Esri (Thailand), NGCC, (c) OpenStreetMap contributors, and the GIS User Community, Esri, HERE, Garmin, (c) OpenStreetMap contributors, and the GIS user community; Orange County, 2018; Mark Thomas, July 2018; GHD, 2020; UltraSystems Environmental, Inc. 2021

August 13, 2021



OC Loop Segments O, P, and Q

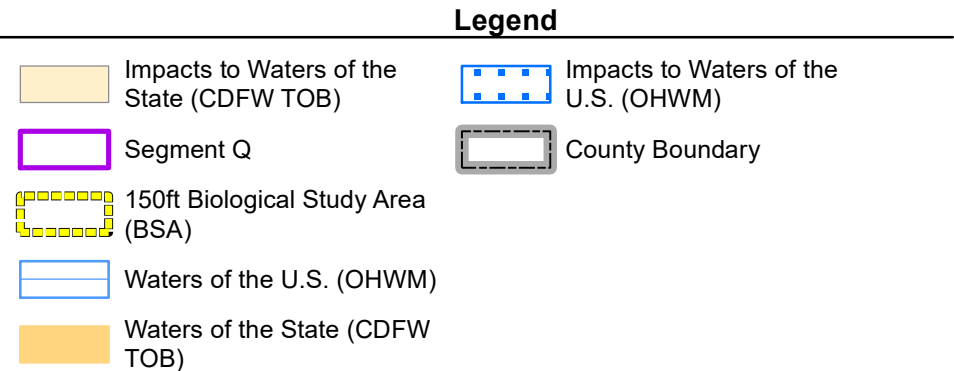
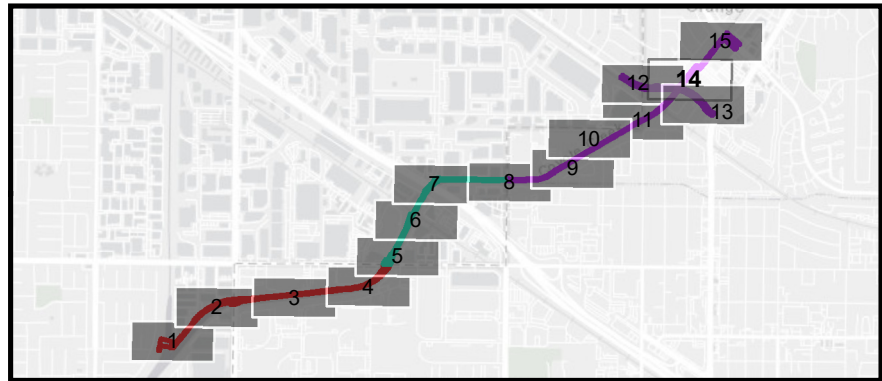
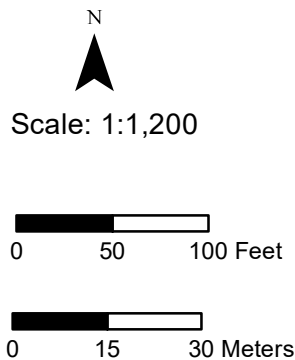
Impacts to Jurisdictional Waters



Path: \\GISSVR\gis\Projects\7034_OC_Loop\MXD\BIO\7034_OC_Loop_JD_Impacts_MapBook_11x17_2021_08_13.mxd

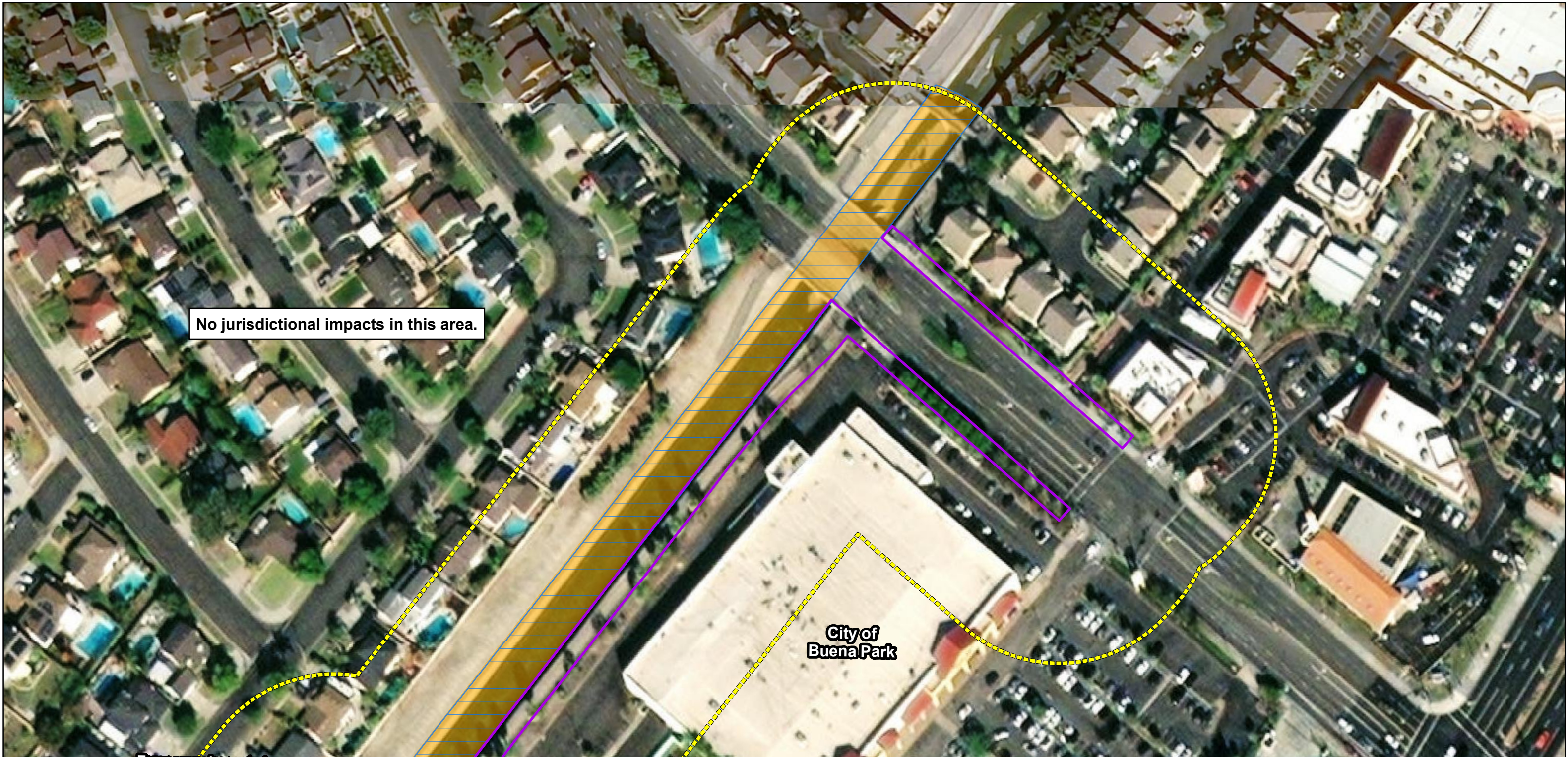
Service Layer Credits: Source: Esri, Maxar, GeoEye, Earthstar Geographics, CNES/Airbus DS, USDA, USGS, AeroGRID, IGN, and the GIS User Community, Sources: Esri, HERE, Garmin, USGS, Intermap, INCREMENT P, NRCan, Esri Japan, METI, Esri China (Hong Kong), Esri Korea, Esri (Thailand), NGCC, (c) OpenStreetMap contributors, and the GIS User Community, Esri, HERE, Garmin, (c) OpenStreetMap contributors, and the GIS user community; Orange County, 2018; Mark Thomas, July 2018; GHD, 2020; UltraSystems Environmental, Inc. 2021

August 13, 2021



OC Loop Segments O, P, and Q

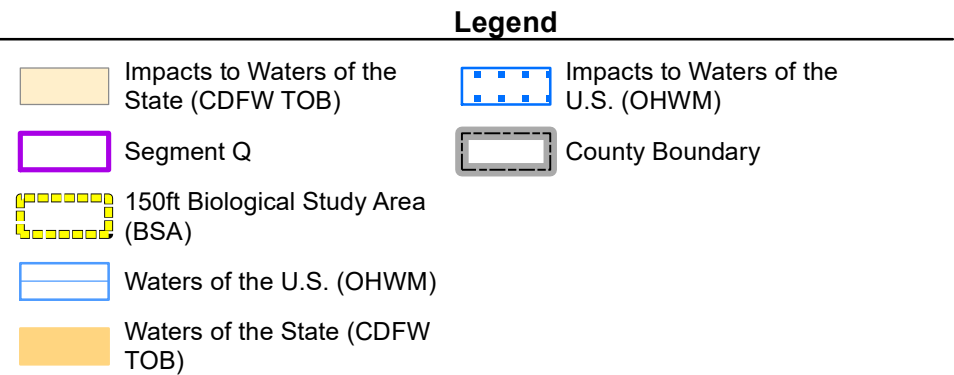
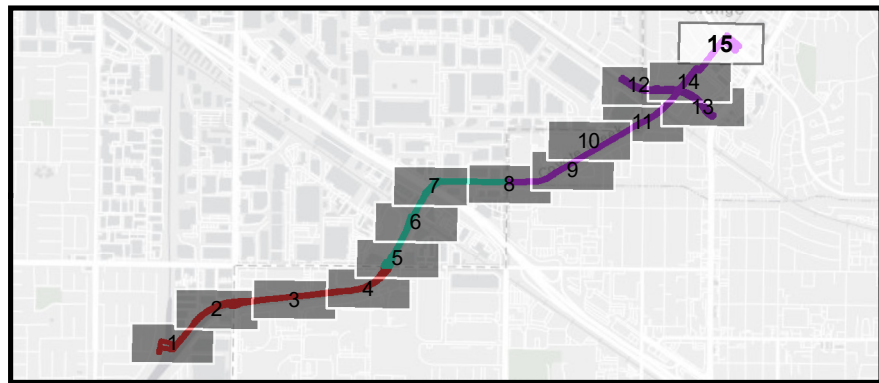
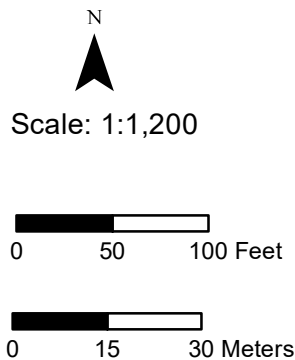
Impacts to Jurisdictional Waters



Path: \\GISSVR\gis\Projects\7034_OC_Loop\MXD\BIO\7034_OC_Loop_JD_Impacts_MapBook_11x17_2021_08_13.mxd

Service Layer Credits: Source: Esri, Maxar, GeoEye, Earthstar Geographics, CNES/Airbus DS, USDA, USGS, AeroGRID, IGN, and the GIS User Community, Sources: Esri, HERE, Garmin, USGS, Intermap, INCREMENT P, NRCan, Esri Japan, METI, Esri China (Hong Kong), Esri Korea, Esri (Thailand), NGCC, (c) OpenStreetMap contributors, and the GIS User Community, Esri, HERE, Garmin, (c) OpenStreetMap contributors, and the GIS user community; Orange County, 2018; Mark Thomas, July 2018; GHD, 2020; UltraSystems Environmental, Inc. 2021

August 13, 2021



OC Loop Segments O, P, and Q

Impacts to
Jurisdictional Waters