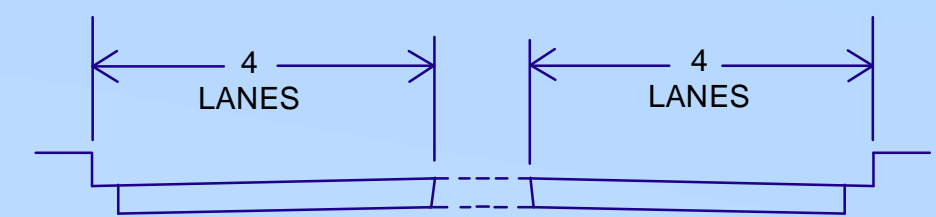
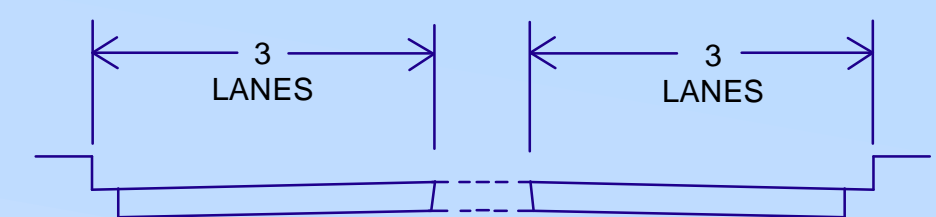


# CIRCULATION PLAN

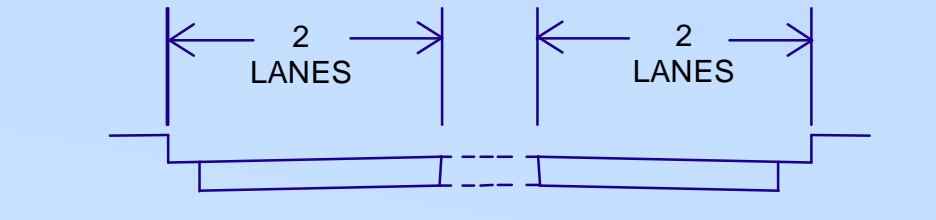
## County of Orange, California



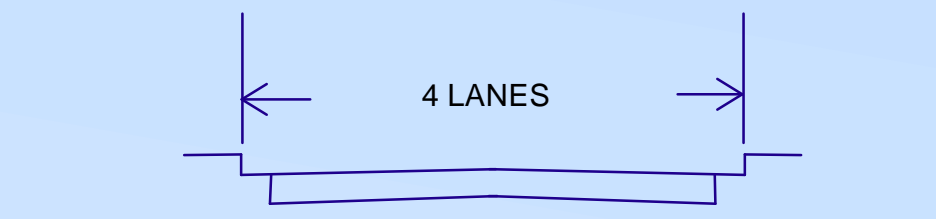
**PRINCIPAL**  
8 Lane Divided Roadway  
Accommodates 45,000 to 60,000 ADT



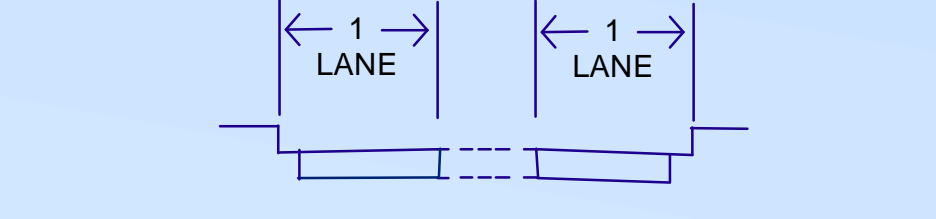
**MAJOR**  
6 Lane Divided Roadway  
Accommodates 30,000 to 45,000 ADT



**PRIMARY**  
4 Lane Divided Roadway  
Accommodates 20,000 to 30,000 ADT



**SECONDARY**  
4 Lane Undivided Roadway  
Accommodates 10,000 to 20,000 ADT



**DIVIDED COLLECTOR**  
2 Lane Divided Roadway  
Accommodates 9,000 to 15,000 ADT



**COMMUTER**  
2 Lane Undivided Roadway  
Accommodates 7,500 to 10,000 ADT

EXTRA RIGHT-OF-WAY MAY BE REQUIRED WHEN AN ARTERIAL HIGHWAY COINCIDES WITH AN ADOPTED ROUTE FOR AN ADDITIONAL PUBLIC FACILITY (EX. PEDESTRIAN, BICYCLE, OR EQUESTRIAN TRAIL), OR FOR A SCENIC HIGHWAY. SEE CALTRANS DESIGN MANUAL.

### CERTIFICATION

I HEREBY CERTIFY THAT THE RECOMMENDED CIRCULATION PLAN WAS APPROVED AS THE OFFICIAL MAP OF THE TRANSPORTATION ELEMENT OF THE GENERAL PLAN BY THE ORANGE COUNTY PLANNING COMMISSION ON AUGUST 28, 2024 AND ADOPTED BY RESOLUTION NUMBER 24-114 OF THE ORANGE COUNTY BOARD OF SUPERVISORS ON OCTOBER 8, 2024

KEVIN ONUMA, INTERIM DIRECTOR  
OC PUBLIC WORKS

NOTE: USERS ARE ENCOURAGED TO CHECK FOR SUBSEQUENT AMENDMENTS TO THE CIRCULATION PLAN. FOR FURTHER INFORMATION, REFER TO THE TRANSPORTATION ELEMENT OF THE COUNTY OF ORANGE GENERAL PLAN

### ARTERIAL HIGHWAYS

	ESTABLISHED ALIGNMENT	CONCEPTUALLY PROPOSED
PRINCIPAL		
MAJOR		
PRIMARY		
SECONDARY		
DIVIDED COLLECTOR		
COMMUTER		

Existing State Freeways/Transportation Corridors

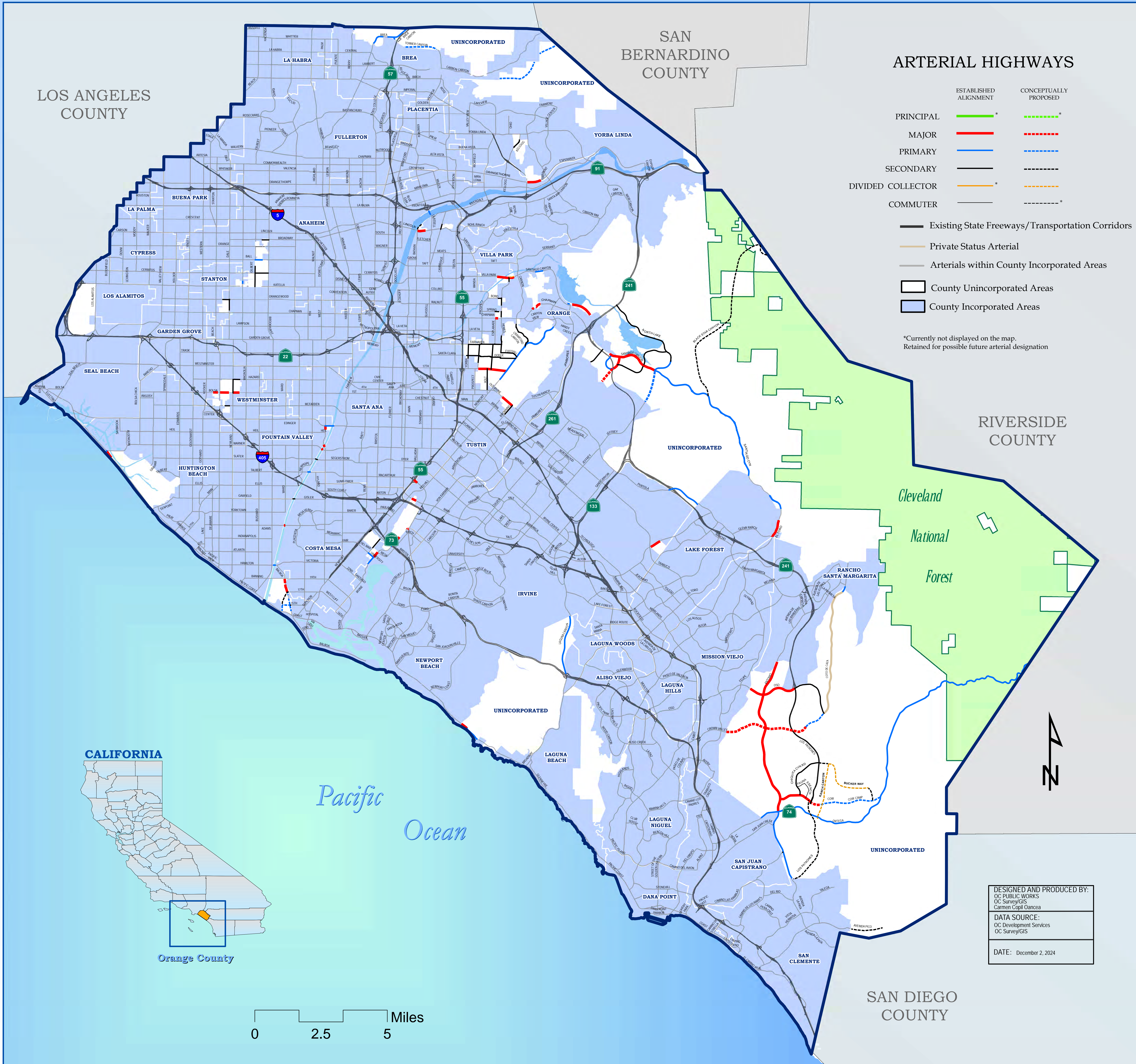
Private Status Arterial

Arterials within County Incorporated Areas

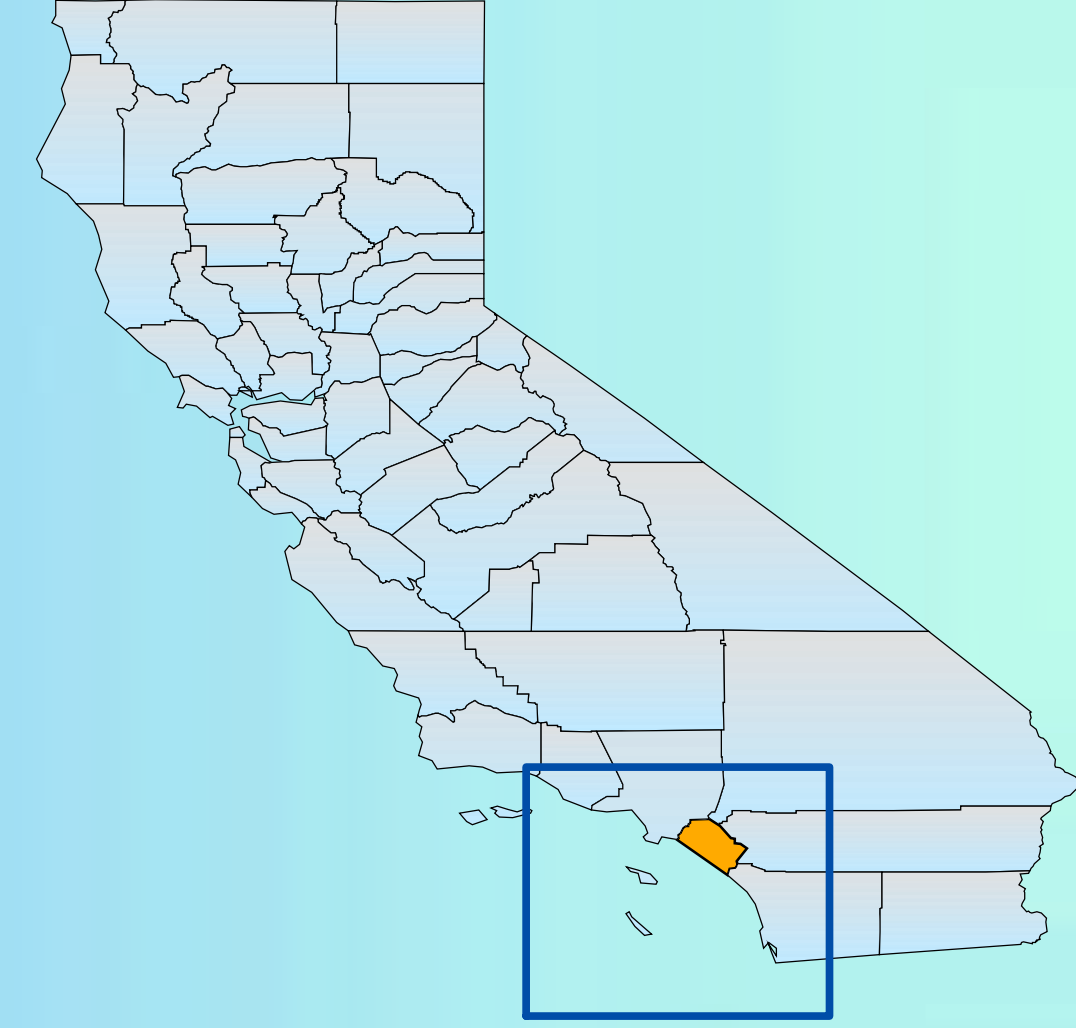
County Unincorporated Areas

County Incorporated Areas

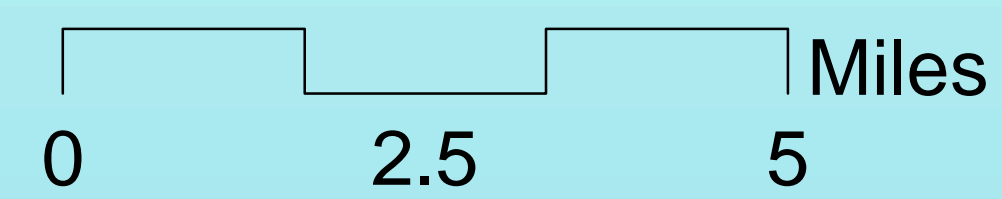
\*Currently not displayed on the map. Retained for possible future arterial designation



### CALIFORNIA



Orange County



DESIGNED AND PRODUCED BY:  
OC PUBLIC WORKS  
OC Survey/GIS  
Carmen Cogliancza

DATA SOURCE:  
OC Development Services  
OC Survey/GIS

DATE: December 2, 2024



SAN DIEGO COUNTY