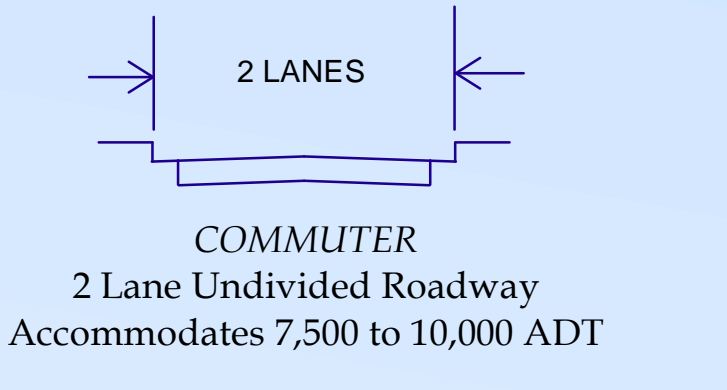
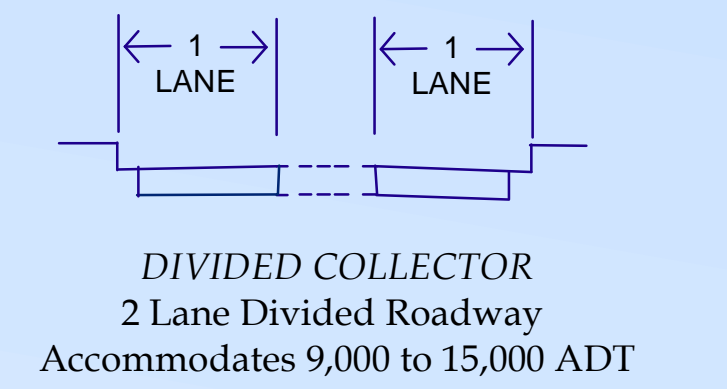
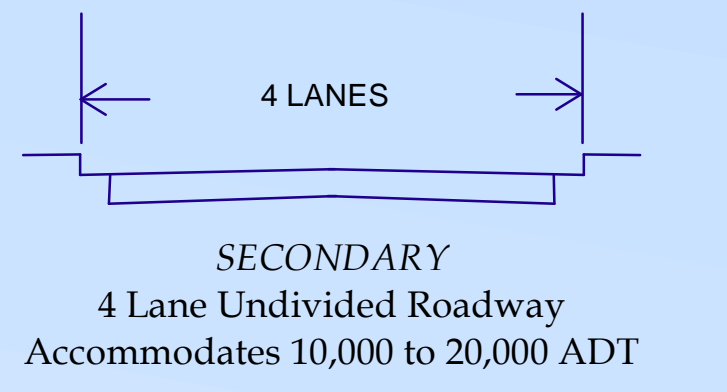
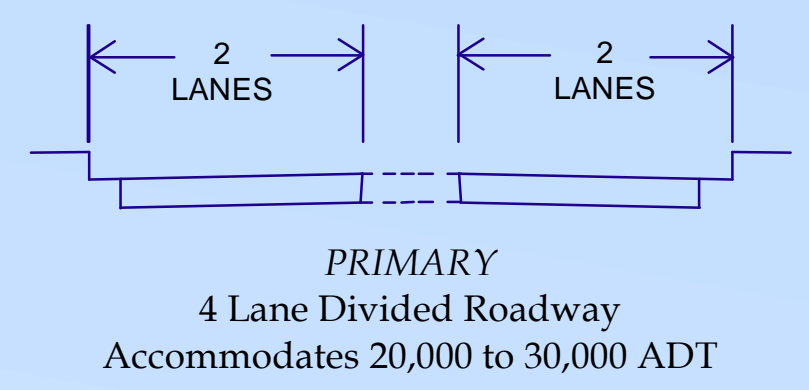
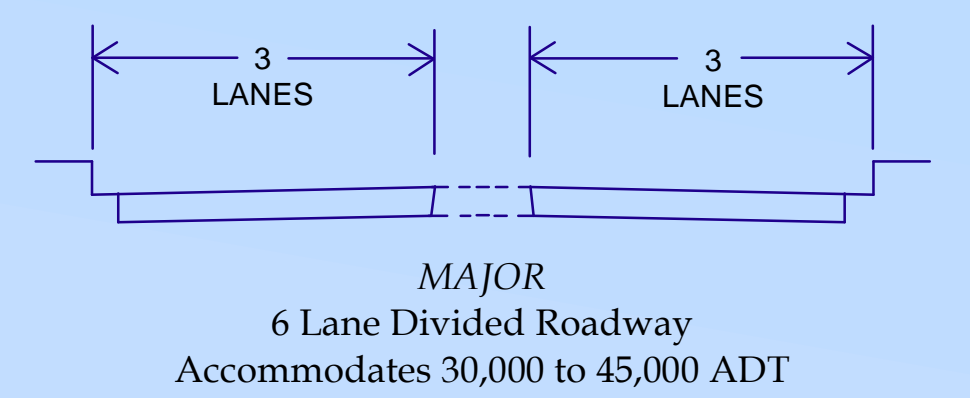
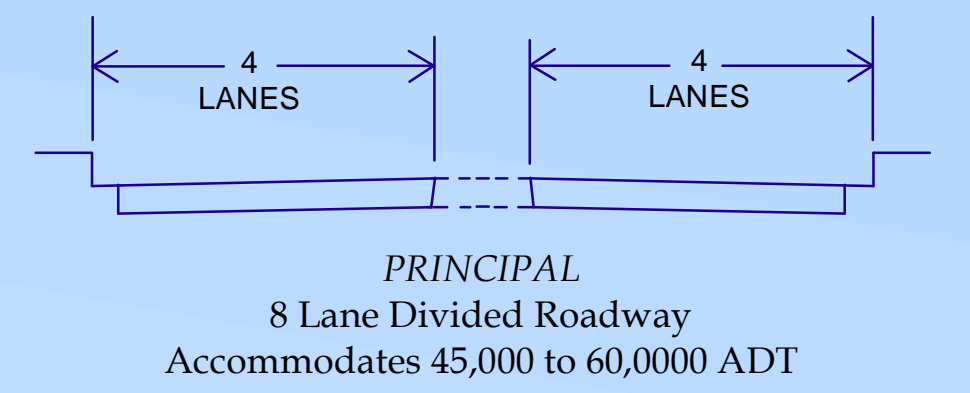


CIRCULATION PLAN

County of Orange, California



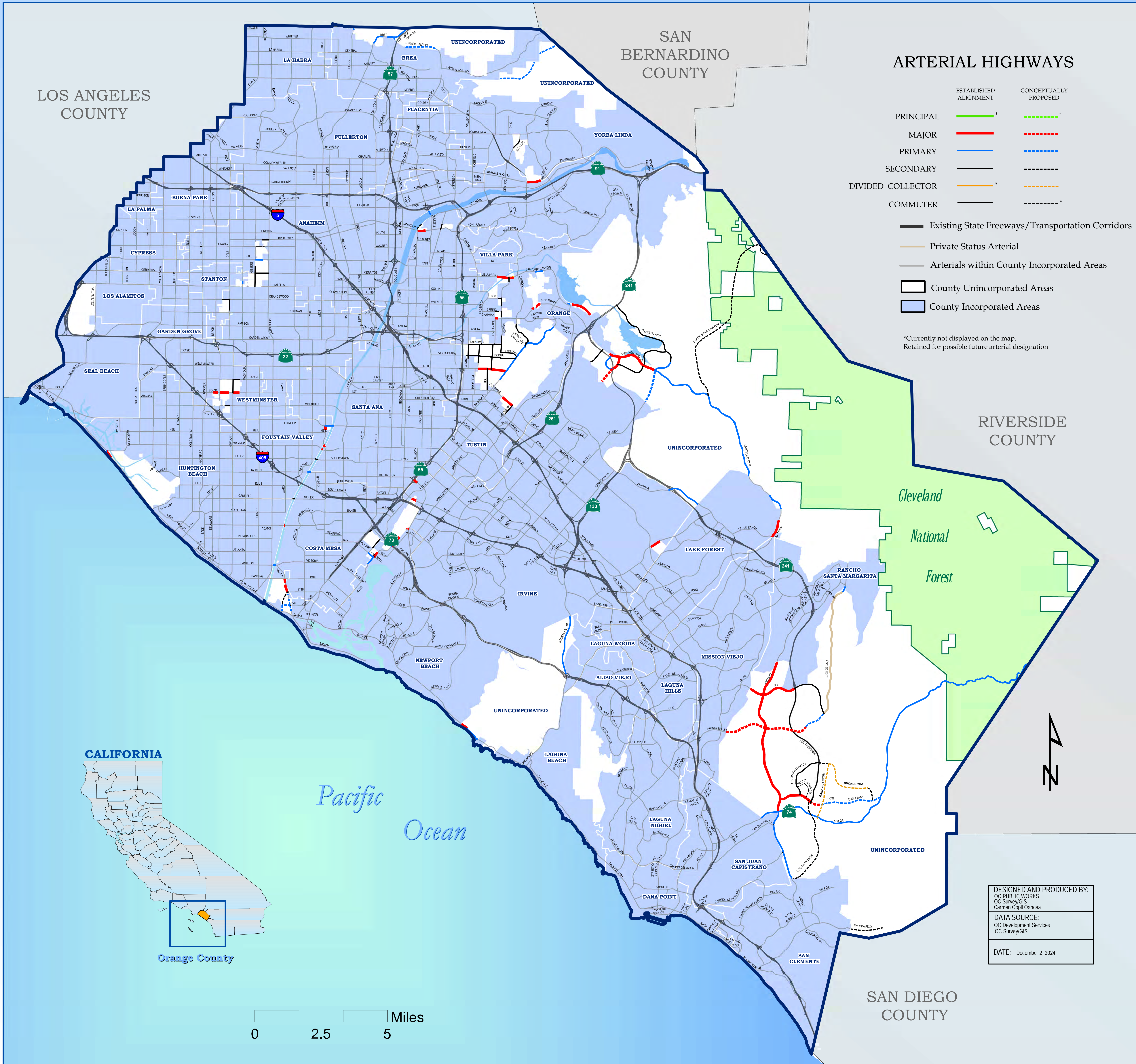
EXTRA RIGHT-OF-WAY MAY BE REQUIRED WHEN AN ARTERIAL HIGHWAY COINCIDES WITH AN ADOPTED ROUTE FOR AN ADDITIONAL PUBLIC FACILITY (EX. PEDESTRIAN, BICYCLE, OR EQUESTRIAN TRAIL), OR FOR A SCENIC HIGHWAY. SEE CALTRANS DESIGN MANUAL.

CERTIFICATION

I HEREBY CERTIFY THAT THE RECOMMENDED CIRCULATION PLAN WAS APPROVED AS THE OFFICIAL MAP OF THE TRANSPORTATION ELEMENT OF THE GENERAL PLAN BY THE ORANGE COUNTY PLANNING COMMISSION ON AUGUST 28, 2024 AND ADOPTED BY RESOLUTION NUMBER 24-114 OF THE ORANGE COUNTY BOARD OF SUPERVISORS ON OCTOBER 8, 2024

KEVIN ONUMA, INTERIM DIRECTOR
OC PUBLIC WORKS

NOTE: USERS ARE ENCOURAGED TO CHECK FOR SUBSEQUENT AMENDMENTS TO THE CIRCULATION PLAN. FOR FURTHER INFORMATION, REFER TO THE TRANSPORTATION ELEMENT OF THE COUNTY OF ORANGE GENERAL PLAN

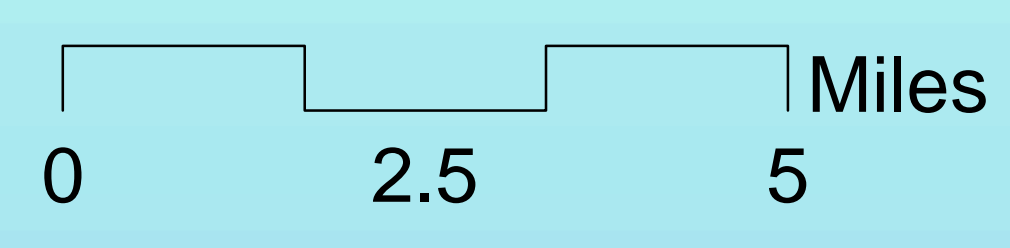
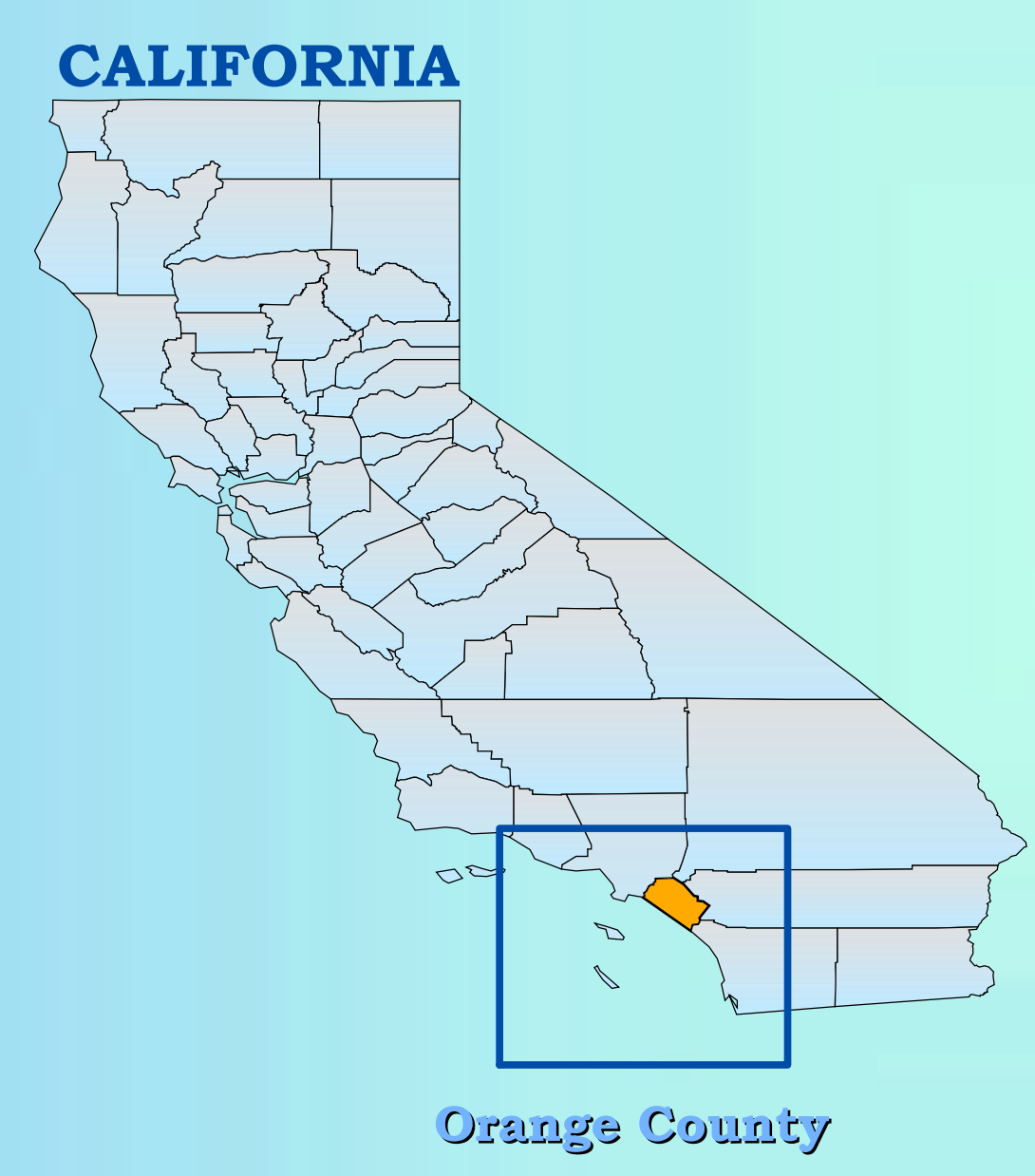


ARTERIAL HIGHWAYS

	ESTABLISHED ALIGNMENT	CONCEPTUALLY PROPOSED
PRINCIPAL		
MAJOR		
PRIMARY		
SECONDARY		
DIVIDED COLLECTOR		
COMMUTER		

- Existing State Freeways/Transportation Corridors
- Private Status Arterial
- Arterials within County Incorporated Areas
- County Unincorporated Areas
- County Incorporated Areas

*Currently not displayed on the map. Retained for possible future arterial designation



DESIGNED AND PRODUCED BY:
OC PUBLIC WORKS
OC Survey/GIS
Carmen Cogliancza

DATA SOURCE:
OC Development Services
OC Survey/GIS

DATE: December 2, 2024

