

APRIL 16, 2025

Mr. Chad Jackson
FAIRMONT PRIVATE SCHOOLS
1575 W. Mable St.
Anaheim, CA 92802

**SUBJECT: FAIRMONT PRIVATE SCHOOL NORTH TUSTIN CAMPUS EXPANSION TRAFFIC
MONITORING PROGRAM, COUNTY OF ORANGE**

Dear Mr. Jackson:

INTRODUCTION

RK ENGINEERING GROUP, INC. (RK) is pleased to provide this Traffic Monitoring Program for the Fairmont Private School North Tustin Campus Expansion Project (hereinafter referred to as "project").

RK previously prepared the *Fairmont Private School North Tustin Campus Expansion Traffic Impact Study*, dated October 3, 2023, which has been reviewed and subsequently approved by the County. However, as part of the project's Conditions of Approval (COA's), a monitoring program shall be completed one (1) year after the effective approval date. The purpose of this monitoring program is to observe and document key ingress/egress & circulation components of the project. More specifically, this monitoring program includes a trip generation analysis, a drop-off/pick-up queuing observation analysis, and a parking demand analysis.

PROJECT DESCRIPTION

The Fairmont Private School's North Tustin Campus is located at 12381-12561 Newport Avenue in the unincorporated County of Orange. Representatives of Fairmont Private School have aimed to enhance its facilities by integrating the First Church of Christ Scientist Church and Sunday School buildings which Fairmont has recently purchased and converted into a performing arts building as well as remodeled the remaining existing buildings into six (6) additional classrooms. As part of this expansion plan, Fairmont plans to accommodate a total of 420 students, equivalent to an additional 100 students (i.e., 31% increase in enrollment) from the time the 2023 traffic study was prepared. Currently, enrollment has increased from 320 students (i.e., existing number of students analyzed in the 2023 traffic study) to 366 students (i.e., today's current enrollment number).

Furthermore, two (2) gates have been added around the expansion site which include one (1) within the parking lot at Vanderlip Avenue entrance and one (1) within the parking lot at Newport Avenue Entrance. These new entry gates are continuously open during peak drop-off and pick-up times to

prevent cars from queuing on Vanderlip Avenue or Newport Avenue and are closed during school instruction hours.

Access to the school site and expansion site is currently provided via five (5) driveways. Specifically, access is provided via one (1) full-access driveway located along Newport Avenue (i.e., School Driveway #1), one (1) full egress-only (signalized) driveway located along Newport Avenue (i.e., School Driveway #2), one (1) right-turn ingress-only driveway located along Newport Avenue (i.e., School Driveway #3), one (1) right-in/right-out only driveway located along Newport Avenue (i.e., Expansion Site Driveway #1), and one (1) full-access driveway located along Vanderlip Avenue (i.e., Expansion Site Driveway #2).

Exhibit A shows a location map of the project site. **Exhibit B** shows the project's current site plan.

EXISTING TRAFFIC COUNTS

To establish existing baseline conditions, RK obtained 24-hour trip generation counts, drop-off/pick-up queue observation counts, and parking demand counts. All existing observations were conducted by Counts Unlimited, Inc. (an independent third-party data collection company) on one typical weekday (i.e., Tuesday, March 18, 2025) during typical weather conditions and while the school was in session.

The locations where each count was conducted are shown in **Exhibit C**. The existing traffic counts are provided in **Appendix A**.

24-Hour Trip Generation Counts

The 24-hour driveway counts were conducted in 15-minute intervals at all five driveways (i.e., three school driveways and two expansion site driveways). These trip generation counts consist of vehicles that enter and exit each driveway. Vehicles that enter and exit the expansion site driveways without stopping to drop-off/pick-up a student and proceed through the school driveways to drop-off/pick-up a student were also included in these counts as a separate entry. Additionally, these counts include vehicles that drop-off and pick-up students along Newport Avenue and Vanderlip Avenue, but do not actually enter the school parking lot. The location of the driveways and the drop-offs/pick-up areas along Newport Avenue and Vanderlip Avenue are shown in Exhibit C.

Drop-Off/Pick-Up Queue Observation Counts

Drop-off/pick-up queue observation counts were conducted in 5-minute intervals from 7:00 AM to 9:00 AM and 2:00 PM to 4:00 PM. These queue observation counts consist of vehicles queued along the drop-off/pick-up lanes and the number of vehicles that spill onto Newport Avenue or Vanderlip Avenue. The location of each drop-off/pick-up zone is shown in Exhibit C.

Additionally, school-related vehicles making an illegal northbound U-turn at the intersection of Newport Avenue and Vanderlip Avenue were also counted.

Parking Demand Counts

Parking demand counts were conducted from 7:00 AM to 5:00 PM in five different zones which are shown in **Exhibit D**.

OBSERVED EXISTING ON-SITE CIRCULATION

To have a more comprehensive understanding of the existing circulation, RK also obtained and reviewed approximately 2 hours of video footage for the drop-off period and 2-hours of video footage for pick-up period when the traffic counts were collected (i.e., 4 total hours of footage). RK also completed an in-person field review to verify the video footage.

Exhibit E shows the location of each camera, the camera angles, and the time periods recorded for each day. **Exhibit F** shows the existing circulation pattern for drop-off/pick-up.

Based on the existing observations, to enter the expansion site drop-off/pick-up zones, most vehicles utilized expansion site driveway #2 along Vanderlip Avenue and traveled southbound through the parking lot to exit via expansion site driveway #1 along Newport Avenue. However, the expansion site does have a two-way circulation pattern. To enter the school drop-off/pick-up zone, vehicles entered via school driveway #3 along Newport Avenue and traveled southbound. Vehicles continued to travel southbound and exit via school driveway #2 along Newport Avenue.

It is important to note that during the pick-up (PM) peak period, some vehicles were observed parking and waiting for students in the marked parking spaces within the school drop-off/pick-up zone treating the drive aisle as two drop-off/pick-up lanes along the curbs with a through lane in the center that merged into one lane to exit via school driveway #2. It was also observed that some vehicles would park along Vanderlip Avenue to walk their students to the drop-off/pick-up zone during both peak periods.

EXISTING TRIP GENERATION

Trip generation represents the amount of traffic that is attracted and produced by a development. The existing trip generation is based on the inbound and outbound driveway trips as well as the drop-off/pick-up trips on the street from the highest hour (4 consecutive 15-minute intervals) within the peak periods counted. The specific peak hours which generated the most traffic from the existing site are the following:

- Drop-Off (AM) Peak Hour: 7:45 AM – 8:45 AM
- Pick-Up (PM) Peak Hour: 2:45 PM – 3:45 PM

Table 1 shows the existing project site trip generation based on the current student enrollment of 366 students.

Table 1 | Fairmont School Trip Generation¹

Scenario	Quantity	Units ²	Weekday						Daily
			Drop-Off (AM) Peak Hour			Pick-Up (PM) Peak Hour			
			In	Out	Total	In	Out	Total	
Existing Enrollment	366	STU	238	215	453	188	184	372	1,264
Future Enrollment ³	420	STU	322	257	579	224	226	450	1,655

¹ Source: 24-hour trip generation counts which are shown in Appendix A.

² STU = Students

³ The trip generation for the future enrollment of 420 students is based on the trip generation reported in the *Fairmont Private School North Tustin Campus Expansion Traffic Impact Study*, dated October 3, 2023.

As shown in Table 1, the existing enrollment of 366 students currently generates approximately 453 weekday daily trips which include approximately 453 drop-off (AM) peak hour trips and 372 pick-up (PM) peak hour trips which does not exceed the forecasted trip generation for the future enrollment of 420 students. As such, the existing trip generation counts are consistent with the forecasted trip generation detailed in the 2023 traffic study that accounted for a higher number of student enrollment.

Additionally, of the 453 drop-off (AM) peak hour trips, there are approximately 11 vehicles that are parking on either Newport Avenue or Vanderlip Avenue to drop off students, which equates to approximately 5% of the drop-off (AM) peak hour trips. Similarly, of the 372 pick-up (PM) peak hour trips, there are 24 vehicles that are parking on the street to pick up students, which equates to approximately 13% of the pick-up (PM) peak hour trips. In total, of the 1,264 daily trips, there are approximately 39 vehicles parking on the street to drop off or pick up which accounts for less than 10% of the daily trips generated by the school. However, it is important to note that there is currently no signage on the street around the school indicating any restrictions on parking during the drop-off or pick-up periods.

EXISTING DROP-OFF/PICK-UP QUEUING ANALYSIS

Based on the queue observation counts, the number of times a certain queue length occurred, the cumulative frequency, the cumulative percentage of that queue length occurring, and the maximum queue are summarized for the school drop-off/pick-up zone and the expansion site drop-off/pick-up zone in **Table 2**. Furthermore, the number of occurrences where there was an excess queue on the street (i.e., overflow) and the percentage of it occurring based on all observations for each drop-off/pick-up zones are shown in **Table 3**.

As shown in Table 2, the maximum queue for the school drop-off/pick-up zone was 25 vehicles and the maximum queue for the expansion site drop-off/pick-up zone is 7 vehicles.

Furthermore, as shown in Table 3, spillover onto Newport Avenue occurred three times (i.e., once in the drop-off period and twice in the pick-up period) and the maximum number of vehicles overflowing onto Newport Avenue was six (6) vehicles based on both peak periods. As shown, the drop-off/pick-

up queues for the school site were observed to be fully accommodated on site (without spilling onto Newport Avenue) during 93.8% of the peak drop-off/pick-up times. Additionally, there were zero occurrences of vehicles overflowing onto Vanderlip Avenue from either peak period.

Table 2 | Drop-Off/Pick-Up Queue Analysis Summary¹

Queue Length (Vehicles)	School Drop-Off/Pick-Up Zone			Expansion Site Drop-Off/Pick-Up Zone		
	Number of Occurrences	Cumulative Frequency	Cumulative Percentage	Cumulative Percentage	Cumulative Frequency	Cumulative Percentage
0	4	4	8.00%	44	44	88.00%
1	7	11	22.00%	4	48	96.00%
2	7	18	36.00%	1	49	98.00%
3	1	19	38.00%	0	49	98.00%
4	4	23	46.00%	0	49	98.00%
5	7	30	60.00%	0	49	98.00%
6	1	31	62.00%	0	49	98.00%
7	2	33	66.00%	1	50	100.00%
8	1	34	68.00%	--	--	--
9	1	35	70.00%	--	--	--
10	3	38	76.00%	--	--	--
11	2	40	80.00%	--	--	--
12	1	41	82.00%	--	--	--
13	0	41	82.00%	--	--	--
14	2	43	86.00%	--	--	--
15	1	44	88.00%	--	--	--
16	1	45	90.00%	--	--	--
17	0	45	90.00%	--	--	--
18	2	47	94.00%	--	--	--
19	1	48	96.00%	--	--	--
20	0	48	96.00%	--	--	--
21	0	48	96.00%	--	--	--
22	0	48	96.00%	--	--	--
23	0	48	96.00%	--	--	--
24	1	49	98.00%	--	--	--
25	1	50	100.00%	--	--	--
Total Observations	50			50		
85th Percentile Queue	14			0		
95th Percentile Queue	19			1		
Maximum Queue	25			7		

¹The queuing counts were conducted on Tuesday, March 18, 2025, from 7:00 AM to 9:00 AM and 2:00 PM to 4:00 PM and the data is combined from the drop-off and pick-up periods.

Table 3 | Drop-Off/Pick-Up Overflow Queue Summary¹

Excess Queue (Vehicles)	School Drop-Off/Pick-Up Zone			Expansion Site Drop-Off/Pick-Up Zone		
	Number of Occurrences	Cumulative Frequency	Percentage of Time Queue is on the Street	Number of Occurrences	Cumulative Frequency	Percentage of Time Queue is on the Street
No Queue Spillage	47	47	--	50	50	--
1	0	47	0.0%	--	--	--
2	1	48	2.1%	--	--	--
3	0	48	0.0%	--	--	--
4	0	48	0.0%	--	--	--
5	1	49	2.1%	--	--	--
6	1	50	2.1%	--	--	--
Total Percentage of Time Queue <i>is not</i> on the Street	93.8%			100.0%		
Total Percentage of Time Queue <i>is</i> on the Street	6.3%			0.0%		

¹ The queuing counts were conducted on Tuesday, March 18, 2025, from 7:00 AM to 9:00 AM and 2:00 PM to 4:00 PM and the data is combined from the drop-off and pick-up periods.

OBSERVED ILLEGAL U-TURN MOVEMENTS

The number of vehicles making an illegal northbound U-turn movement at the intersection of Newport Avenue and Vanderlip Avenue during the drop-off and pick-up periods that are school-related are shown in **Table 4**.

Table 4 | Illegal Northbound U-Turns on Newport Avenue (School Related)

Number of Vehicles Making an Illegal U-Turn Movement	
Drop-Off Period	4
Pick-Up Period	16
Total Number of Vehicles	20

As shown in Table 4, there were approximately four (4) vehicles that made the illegal northbound U-turn movement during the drop-off (AM) period and sixteen (16) vehicles during the pick-up (PM) period.

OBSERVED PARKING DEMAND

The parking demand counts were organized per zone which is shown in Exhibit D. The project's peak parking demand based on the parking demand counts is summarized in **Table 5**.

Table 5 | Observed Parking Demand

Start Time	Number of Observed Parking Spaces					Total Parking Demand (Zones 1–5)
	Zone 1	Zone 2	Zone 3	Zone 4	Zone 5	
	Expansion Site Parking Lot	North School Parking Lot	Drop-Off/Pick-Up School Zone	South School Parking Lot	Street Parking (Newport Ave)	
7:00 AM	4	0	1	1	0	6
8:00 AM	39	1	4	3	2	49
9:00 AM	44	4	2	3	0	53
10:00 AM	44	4	1	3	0	52
11:00 AM	43	3	1	2	0	49
12:00 PM	40	3	4	3	0	50
1:00 PM	40	3	2	2	0	47
2:00 PM	41	3	2	3	0	49
3:00 PM	39	5	7	2	1	54
4:00 PM	19	4	5	0	0	28
5:00 PM	7	2	3	0	0	12
Peak Parking Demand	44	5	7	3	2	54
Existing Parking Supply¹	63	11	12	4	15	105
Percent (%) Occupancy	70%	45%	58%	75%	13%	51%

¹ The total existing parking supply shown is consistent with the proposed parking supply shown in the *Fairmont Private School North Tustin Campus Expansion Parking Analysis*, dated June 2023, and prepared by RK Engineering Group.

There is a total of 106 parking spaces between all five zones observed. Between all five zones combined, the maximum peak parking demand was 54 vehicles, which occurred on Tuesday, March 18, 2025, at 3:00 PM. As such, a maximum of 51% of the parking spaces were occupied.

RECOMMENDATIONS

RK Engineering Group, Inc. has completed this Traffic Monitoring Program for the proposed Fairmont Private School North Tustin Campus Expansion Project.

Based on an evaluation of the school's current on-site circulation, drop-off/pick-up queues, and observed parking demand, RK concludes that there are no significant traffic deficiencies that would require substantial improvements. RK recommends the school implement the following to ensure drop-off/pick-up operations continue to remain efficient as the student enrollment continues to grow:

1. The school shall continuously monitor drop-off/pick-up operations and on-site circulation to ensure spillage onto Newport Avenue or Vanderlip Avenue remains infrequent and temporary. In the rare instances that queues may spill back onto Newport Avenue or Vanderlip Avenue, the school shall ensure vehicles do not obstruct through traffic (vehicles and bicycles) along either roadway.
2. Continuously monitor that the No U-Turn signage (i.e., CA MUTCD Sign R3-4) remains installed within the center raised median along Newport Avenue.
3. School staff shall periodically educate parents and students on proper drop-off/pick-up operations as well as periodically monitor and report vehicles that are observed to violate these protocols.

RK Engineering Group, Inc. appreciates this opportunity to work with the FAIRMONT PRIVATE SCHOOLS on the Fairmont Private School North Tustin Campus Expansion Project. If you have any questions regarding this review, or need further clarification, please contact us at (949) 474-0809.

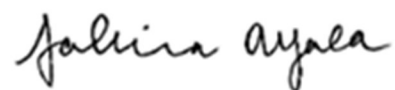
Sincerely,

RK ENGINEERING GROUP, INC.



Justin Tucker, P.E., T.E.
Principal

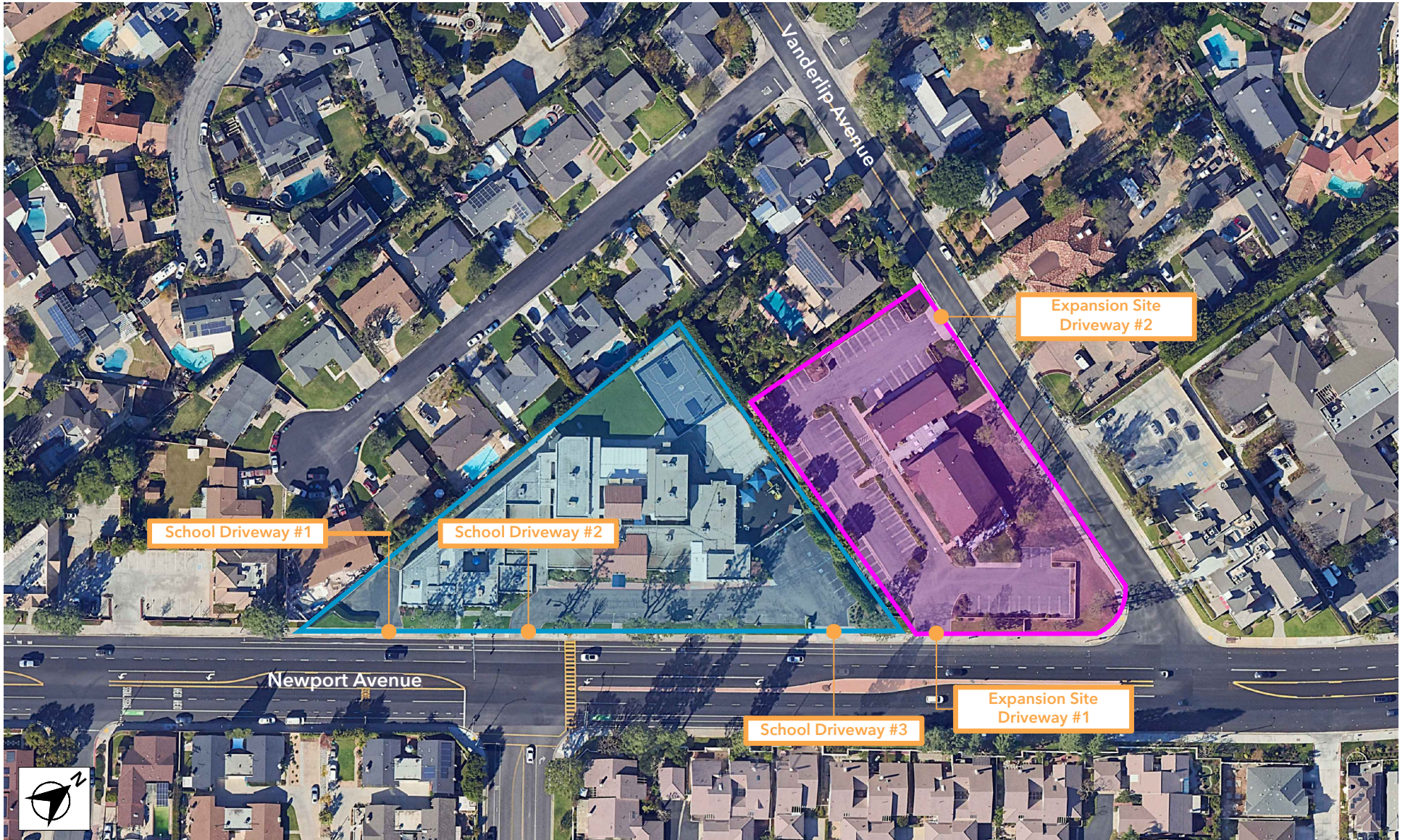
Attachments



Sabrina Ayala
Engineer I



Exhibits



Legend

- = School Site
- = Expansion Site

Exhibit A Location Map

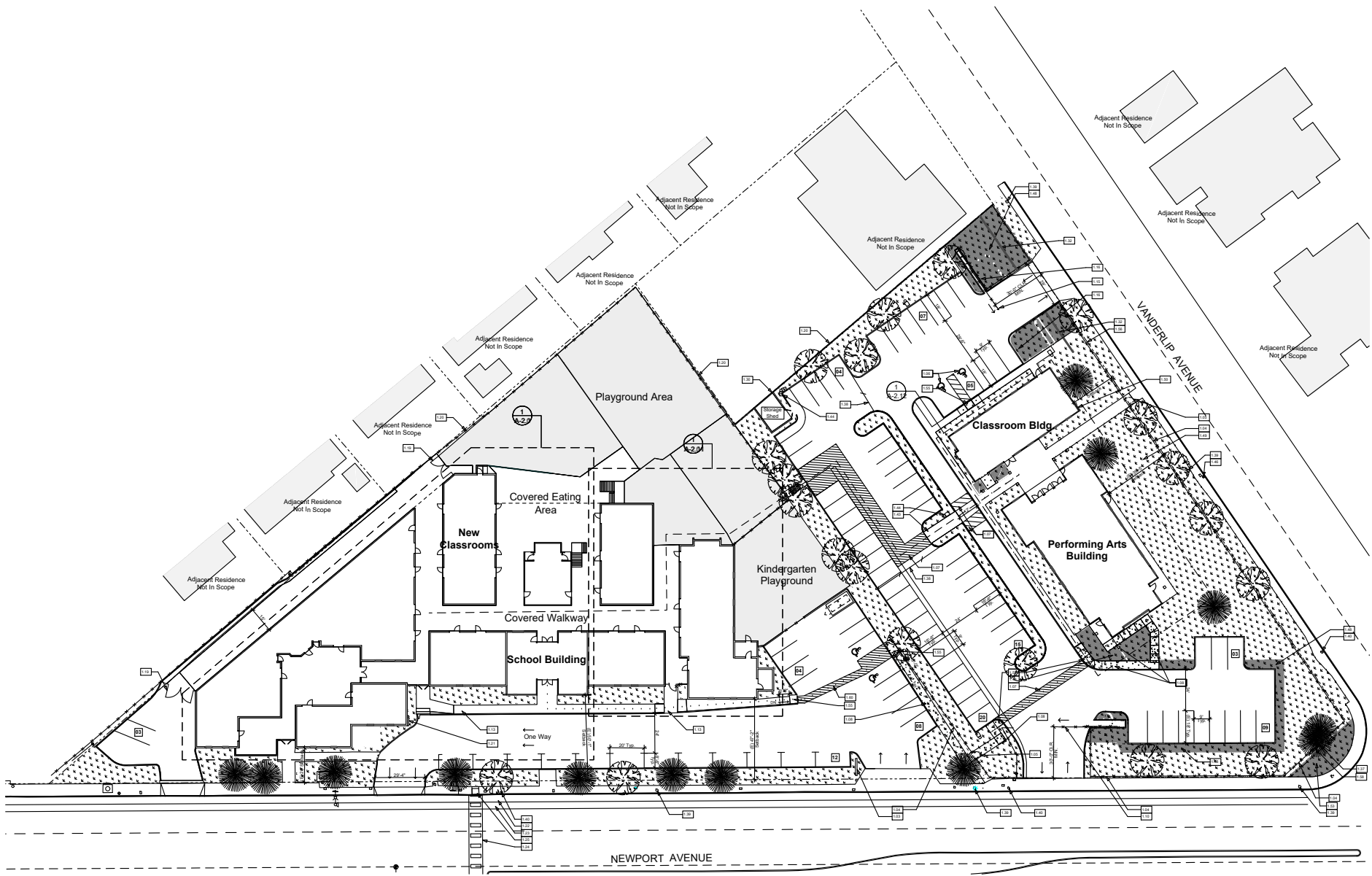


Exhibit B

Site Plan



Legend

- = School Drop-Off/Pick-Up Zone
- = Expansion Site Drop-Off/Pick-Up Zone
- = 24-Hour Trip Generation Count Location
- = 24-Hour Trip Generation Count Zone
- = Illegal Northbound U-Turn Count Location

Exhibit C

Count Location Map



ENGINEERING
GROUP INC.



Legend

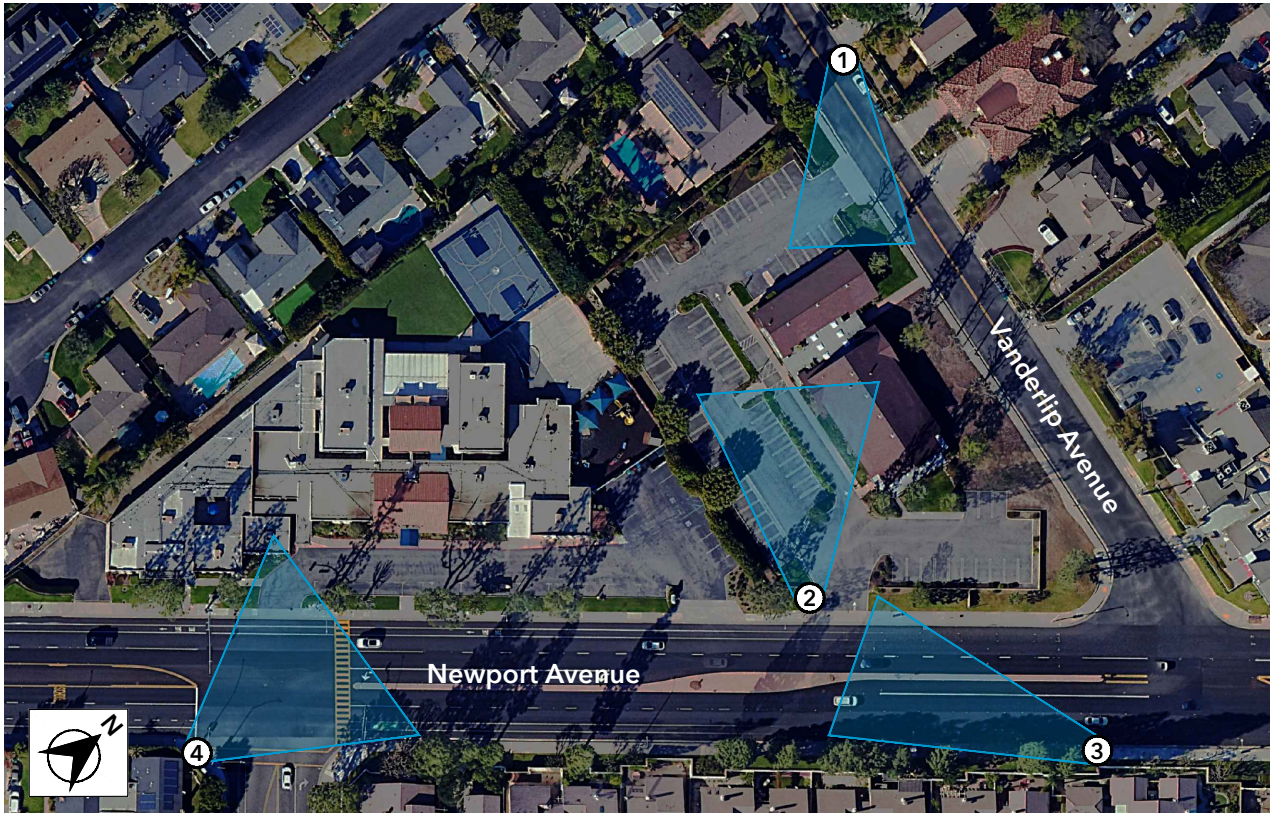
— = Parking Zones

Exhibit D

Parking Zones



ENGINEERING
GROUP INC.



Legend

- ① = Camera Location
 [Blue Triangle] = Camera Angle

Drop-Off Period	Pick-Up Period
7:00 AM - 9:00 AM	2:00 PM - 4:00 PM
Drop-Off Peak Hour	Pick-Up Peak Hour
7:45 AM - 8:45 AM	2:45 PM - 3:45 PM



Camera Angle 4 - School Dwy #2 (Exit)



Camera Angle 1 - Expansion Site Dwy #2 (Entrance)



Camera Angle 2 - Expansion Site Parking Lot



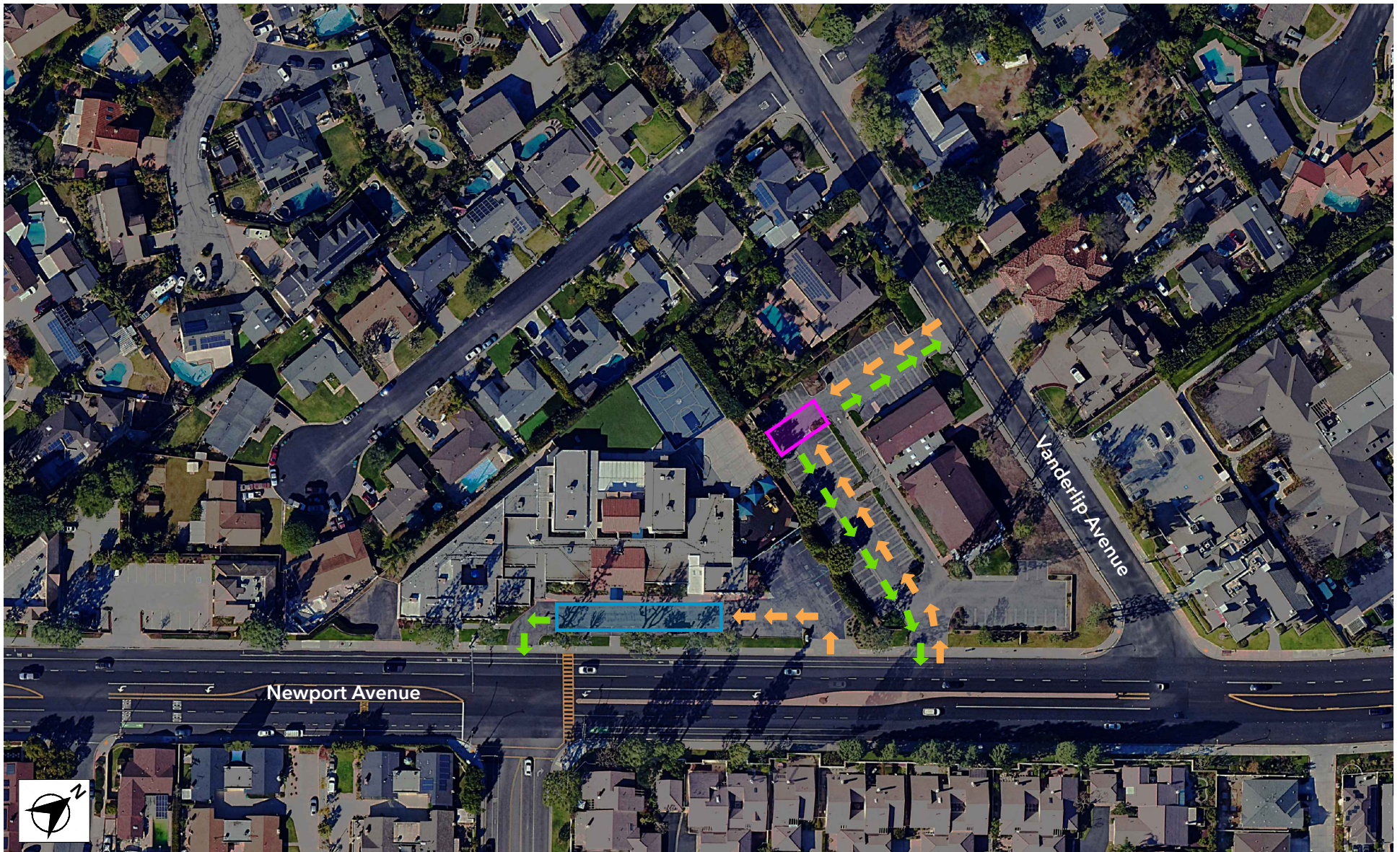
Camera Angle 3 - Expansion Site Dwy #1 (Exit) & School Dwy #3 (Entrance)

Exhibit E

Camera Angles



ENGINEERING
GROUP INC.



Legend

- = School Drop-Off/Pick-Up Zone
- = Expansion Site Drop-Off/Pick-Up Zone
- = Ingress Circulation
- = Egress Circulation

Exhibit F

Observed Drop-Off/Pick-Up Circulation Path



ENGINEERING
GROUP INC.



Appendices



Appendix A

Existing Traffic Counts



Appendix A-I

24-Hour Trip Generation Counts

24 Hour Driveway Counts

LOCATION: 12421 Newport Avenue
School Driveway 1: Staff Parking
 County: Orange

DATE: 3/18/2025
 DAY: Tuesday

AM PERIOD			
Time	Entering	Exiting	TOTAL
0:00	0	0	0
0:15	0	0	0
0:30	0	0	0
0:45	0	0	0
1:00	0	0	0
1:15	0	0	0
1:30	0	0	0
1:45	0	0	0
2:00	0	0	0
2:15	0	0	0
2:30	0	0	0
2:45	0	0	0
3:00	0	0	0
3:15	0	0	0
3:30	0	0	0
3:45	0	0	0
4:00	0	0	0
4:15	0	0	0
4:30	0	0	0
4:45	0	0	0
5:00	0	0	0
5:15	0	0	0
5:30	0	0	0
5:45	1	0	1
6:00	0	0	0
6:15	0	0	0
6:30	0	0	0
6:45	0	0	0
7:00	0	0	0
7:15	0	0	0
7:30	0	0	0
7:45	4	2	6
8:00	5	3	8
8:15	1	3	4
8:30	1	1	2
8:45	0	0	0
9:00	0	0	0
9:15	0	0	0
9:30	0	0	0
9:45	0	0	0
10:00	0	1	1
10:15	0	1	1
10:30	0	0	0
10:45	1	0	1
11:00	1	0	1
11:15	0	0	0
11:30	0	0	0
11:45	0	0	0

AM TOTAL

14	11	25
----	----	----

PM PERIOD			
Time	Entering	Exiting	TOTAL
12:00	0	0	0
12:15	0	0	0
12:30	0	0	0
12:45	0	1	1
13:00	1	0	1
13:15	0	0	0
13:30	0	0	0
13:45	0	0	0
14:00	0	0	0
14:15	0	0	0
14:30	0	1	1
14:45	0	0	0
15:00	0	0	0
15:15	0	0	0
15:30	0	0	0
15:45	0	2	2
16:00	0	0	0
16:15	0	0	0
16:30	0	0	0
16:45	0	0	0
17:00	0	0	0
17:15	0	0	0
17:30	0	0	0
17:45	0	0	0
18:00	0	0	0
18:15	0	0	0
18:30	0	0	0
18:45	0	0	0
19:00	0	0	0
19:15	0	0	0
19:30	0	0	0
19:45	0	0	0
20:00	0	0	0
20:15	0	0	0
20:30	0	0	0
20:45	0	0	0
21:00	0	0	0
21:15	0	0	0
21:30	0	0	0
21:45	0	0	0
22:00	0	0	0
22:15	0	0	0
22:30	0	0	0
22:45	0	0	0
23:00	0	0	0
23:15	0	0	0
23:30	0	0	0
23:45	0	0	0

PM TOTAL

1	4	5
---	---	---

24 HOUR TOTAL

15	15	30
----	----	----

24 Hour Driveway Counts

LOCATION: 12421 Newport Avenue
School Driveway 2
 County: Orange

DATE: 3/18/2025
 DAY: Tuesday

AM PERIOD			
Time	Entering	Exiting	TOTAL
0:00	0	0	0
0:15	0	0	0
0:30	0	0	0
0:45	0	0	0
1:00	0	0	0
1:15	0	0	0
1:30	0	0	0
1:45	0	0	0
2:00	0	0	0
2:15	0	0	0
2:30	0	0	0
2:45	0	0	0
3:00	0	0	0
3:15	0	0	0
3:30	0	0	0
3:45	0	0	0
4:00	0	0	0
4:15	0	0	0
4:30	0	1	1
4:45	0	0	0
5:00	0	0	0
5:15	0	0	0
5:30	0	0	0
5:45	0	0	0
6:00	0	0	0
6:15	0	0	0
6:30	0	0	0
6:45	0	0	0
7:00	0	5	5
7:15	0	5	5
7:30	0	8	8
7:45	0	32	32
8:00	0	60	60
8:15	0	48	48
8:30	0	9	9
8:45	0	5	5
9:00	0	4	4
9:15	0	2	2
9:30	0	1	1
9:45	0	0	0
10:00	0	0	0
10:15	0	0	0
10:30	0	1	1
10:45	0	0	0
11:00	0	0	0
11:15	0	4	4
11:30	0	0	0
11:45	0	1	1

AM TOTAL	0	186	186
----------	---	-----	-----

PM PERIOD			
Time	Entering	Exiting	TOTAL
12:00	0	6	6
12:15	0	5	5
12:30	0	4	4
12:45	0	1	1
13:00	0	2	2
13:15	0	1	1
13:30	0	1	1
13:45	0	2	2
14:00	0	2	2
14:15	0	2	2
14:30	0	10	10
14:45	0	17	17
15:00	0	23	23
15:15	0	40	40
15:30	0	41	41
15:45	0	19	19
16:00	0	7	7
16:15	0	11	11
16:30	0	9	9
16:45	0	5	5
17:00	0	6	6
17:15	0	7	7
17:30	0	0	0
17:45	0	0	0
18:00	0	0	0
18:15	0	0	0
18:30	0	0	0
18:45	0	0	0
19:00	0	0	0
19:15	0	0	0
19:30	0	1	1
19:45	0	0	0
20:00	0	0	0
20:15	0	0	0
20:30	0	0	0
20:45	0	0	0
21:00	0	1	1
21:15	0	0	0
21:30	0	0	0
21:45	0	0	0
22:00	0	0	0
22:15	0	0	0
22:30	0	0	0
22:45	0	0	0
23:00	0	1	1
23:15	0	0	0
23:30	0	0	0
23:45	0	0	0

PM TOTAL	0	224	224
----------	---	-----	-----

24 HOUR TOTAL	0	410	410
---------------	---	-----	-----

24 Hour Driveway Counts

LOCATION: 12421 Newport Avenue
School Driveway 3
 County: Orange

DATE: 3/18/2025
 DAY: Tuesday

AM PERIOD			
Time	Entering	Exiting	TOTAL
0:00	0	0	0
0:15	0	0	0
0:30	0	0	0
0:45	0	0	0
1:00	0	0	0
1:15	0	0	0
1:30	0	0	0
1:45	0	0	0
2:00	0	0	0
2:15	0	0	0
2:30	0	0	0
2:45	0	0	0
3:00	0	0	0
3:15	0	0	0
3:30	0	0	0
3:45	0	0	0
4:00	0	0	0
4:15	1	0	1
4:30	0	0	0
4:45	0	0	0
5:00	1	0	1
5:15	0	0	0
5:30	0	0	0
5:45	0	0	0
6:00	0	0	0
6:15	0	0	0
6:30	0	0	0
6:45	0	0	0
7:00	11	0	11
7:15	1	0	1
7:30	6	0	6
7:45	41	0	41
8:00	65	0	65
8:15	36	0	36
8:30	11	0	11
8:45	2	0	2
9:00	5	0	5
9:15	1	0	1
9:30	1	0	1
9:45	0	0	0
10:00	1	0	1
10:15	0	0	0
10:30	0	0	0
10:45	0	1	1
11:00	0	0	0
11:15	6	0	6
11:30	1	0	1
11:45	2	1	3

AM TOTAL	192	2	194
----------	-----	---	-----

PM PERIOD			
Time	Entering	Exiting	TOTAL
12:00	4	1	5
12:15	3	0	3
12:30	4	0	4
12:45	3	0	3
13:00	3	0	3
13:15	2	0	2
13:30	0	0	0
13:45	1	0	1
14:00	3	0	3
14:15	7	0	7
14:30	12	0	12
14:45	26	0	26
15:00	23	0	23
15:15	44	0	44
15:30	33	1	34
15:45	15	0	15
16:00	7	0	7
16:15	8	0	8
16:30	9	0	9
16:45	4	0	4
17:00	6	1	7
17:15	4	0	4
17:30	0	0	0
17:45	0	0	0
18:00	0	0	0
18:15	0	0	0
18:30	0	0	0
18:45	0	1	1
19:00	2	0	2
19:15	0	0	0
19:30	0	0	0
19:45	0	0	0
20:00	0	0	0
20:15	0	0	0
20:30	1	0	1
20:45	0	0	0
21:00	0	0	0
21:15	0	0	0
21:30	0	0	0
21:45	0	0	0
22:00	0	0	0
22:15	0	0	0
22:30	0	0	0
22:45	0	0	0
23:00	0	0	0
23:15	0	0	0
23:30	0	0	0
23:45	0	0	0

PM TOTAL	224	4	228
----------	-----	---	-----

24 HOUR TOTAL	416	6	422
---------------	-----	---	-----

24 Hour Driveway Counts

LOCATION: 12381 Newport Ave
Church Dwy 1: Newport
 County: Orange

DATE: 3/18/2025
 DAY: Tuesday

AM PERIOD			
Time	Entering	Exiting	TOTAL
0:00	0	0	0
0:15	0	0	0
0:30	0	0	0
0:45	0	0	0
1:00	0	0	0
1:15	0	0	0
1:30	0	0	0
1:45	0	0	0
2:00	0	0	0
2:15	0	0	0
2:30	0	0	0
2:45	0	0	0
3:00	0	0	0
3:15	0	0	0
3:30	0	0	0
3:45	0	0	0
4:00	0	0	0
4:15	0	0	0
4:30	0	0	0
4:45	0	0	0
5:00	0	0	0
5:15	0	0	0
5:30	0	0	0
5:45	0	0	0
6:00	0	0	0
6:15	0	0	0
6:30	0	0	0
6:45	0	0	0
7:00	0	0	0
7:15	0	1	1
7:30	0	8	8
7:45	1	11	12
8:00	0	16	16
8:15	0	20	20
8:30	0	8	8
8:45	0	2	2
9:00	0	0	0
9:15	0	0	0
9:30	0	0	0
9:45	0	0	0
10:00	0	0	0
10:15	0	1	1
10:30	0	2	2
10:45	0	1	1
11:00	0	0	0
11:15	0	1	1
11:30	0	1	1
11:45	0	1	1

AM TOTAL	1	73	74
----------	---	----	----

PM PERIOD			
Time	Entering	Exiting	TOTAL
12:00	0	2	2
12:15	0	0	0
12:30	0	1	1
12:45	0	4	4
13:00	0	1	1
13:15	0	1	1
13:30	0	1	1
13:45	0	0	0
14:00	0	3	3
14:15	0	1	1
14:30	2	3	5
14:45	0	9	9
15:00	0	9	9
15:15	0	11	11
15:30	1	13	14
15:45	0	10	10
16:00	0	1	1
16:15	0	4	4
16:30	0	5	5
16:45	0	0	0
17:00	0	0	0
17:15	0	1	1
17:30	0	0	0
17:45	0	2	2
18:00	0	0	0
18:15	0	0	0
18:30	0	0	0
18:45	0	0	0
19:00	0	0	0
19:15	0	0	0
19:30	0	0	0
19:45	0	0	0
20:00	0	0	0
20:15	0	0	0
20:30	0	0	0
20:45	0	0	0
21:00	0	0	0
21:15	0	0	0
21:30	0	0	0
21:45	0	0	0
22:00	0	0	0
22:15	0	0	0
22:30	0	0	0
22:45	0	0	0
23:00	0	0	0
23:15	0	0	0
23:30	0	0	0
23:45	0	0	0

PM TOTAL	3	82	85
----------	---	----	----

24 HOUR TOTAL	4	155	159
---------------	---	-----	-----

24 Hour Driveway Counts

LOCATION: 12381 Newport Ave
Church Dwy 2: Vanderlip
 County: Orange

DATE: 3/18/2025
 DAY: Tuesday

AM PERIOD			
Time	Entering	Exiting	TOTAL
0:00	0	0	0
0:15	0	0	0
0:30	0	0	0
0:45	0	0	0
1:00	0	0	0
1:15	0	0	0
1:30	0	0	0
1:45	0	0	0
2:00	0	0	0
2:15	0	0	0
2:30	0	0	0
2:45	0	0	0
3:00	0	0	0
3:15	0	0	0
3:30	0	0	0
3:45	0	0	0
4:00	0	0	0
4:15	0	0	0
4:30	0	0	0
4:45	0	0	0
5:00	0	0	0
5:15	0	0	0
5:30	0	0	0
5:45	0	0	0
6:00	0	0	0
6:15	0	0	0
6:30	1	0	1
6:45	2	0	2
7:00	7	0	7
7:15	10	0	10
7:30	13	0	13
7:45	25	1	26
8:00	26	0	26
8:15	19	3	22
8:30	5	0	5
8:45	4	0	4
9:00	1	0	1
9:15	0	1	1
9:30	0	0	0
9:45	0	0	0
10:00	0	0	0
10:15	0	0	0
10:30	0	0	0
10:45	3	0	3
11:00	0	0	0
11:15	1	1	2
11:30	0	1	1
11:45	1	0	1

AM TOTAL	118	7	125
----------	-----	---	-----

PM PERIOD			
Time	Entering	Exiting	TOTAL
12:00	1	0	1
12:15	1	0	1
12:30	0	0	0
12:45	5	0	5
13:00	1	0	1
13:15	1	0	1
13:30	1	0	1
13:45	1	0	1
14:00	0	2	2
14:15	4	0	4
14:30	2	0	2
14:45	10	2	12
15:00	12	2	14
15:15	16	4	20
15:30	18	7	25
15:45	2	13	15
16:00	1	5	6
16:15	5	3	8
16:30	2	2	4
16:45	0	0	0
17:00	0	1	1
17:15	0	1	1
17:30	0	0	0
17:45	0	1	1
18:00	0	0	0
18:15	0	0	0
18:30	0	0	0
18:45	0	0	0
19:00	0	0	0
19:15	0	0	0
19:30	0	0	0
19:45	0	0	0
20:00	0	0	0
20:15	0	0	0
20:30	0	0	0
20:45	0	0	0
21:00	0	0	0
21:15	0	0	0
21:30	0	0	0
21:45	0	0	0
22:00	0	0	0
22:15	0	0	0
22:30	0	0	0
22:45	0	0	0
23:00	0	0	0
23:15	0	0	0
23:30	0	0	0
23:45	0	0	0

PM TOTAL	83	43	126
----------	----	----	-----

24 HOUR TOTAL	201	50	251
---------------	-----	----	-----

24 Hour Driveway Counts

LOCATION: 12421/12381 Newport Avenue
On-Street DropOff / PickUp
 County: Orange

DATE: 3/18/2025
 DAY: Tuesday

AM PERIOD			
Time	Entering	Exiting	TOTAL
0:00	0	0	0
0:15	0	0	0
0:30	0	0	0
0:45	0	0	0
1:00	0	0	0
1:15	0	0	0
1:30	0	0	0
1:45	0	0	0
2:00	0	0	0
2:15	0	0	0
2:30	0	0	0
2:45	0	0	0
3:00	0	0	0
3:15	0	0	0
3:30	0	0	0
3:45	0	0	0
4:00	0	0	0
4:15	0	0	0
4:30	0	0	0
4:45	0	0	0
5:00	0	0	0
5:15	0	0	0
5:30	0	0	0
5:45	0	0	0
6:00	0	0	0
6:15	0	0	0
6:30	0	0	0
6:45	0	0	0
7:00	0	0	0
7:15	0	0	0
7:30	0	0	0
7:45	2	2	4
8:00	6	6	12
8:15	3	3	6
8:30	0	0	0
8:45	0	0	0
9:00	0	0	0
9:15	0	0	0
9:30	0	0	0
9:45	0	0	0
10:00	0	0	0
10:15	0	0	0
10:30	0	0	0
10:45	0	0	0
11:00	0	0	0
11:15	0	0	0
11:30	0	0	0
11:45	0	0	0

AM TOTAL	11	11	22
----------	----	----	----

PM PERIOD			
Time	Entering	Exiting	TOTAL
12:00	0	0	0
12:15	0	0	0
12:30	0	0	0
12:45	0	0	0
13:00	0	0	0
13:15	0	0	0
13:30	0	0	0
13:45	0	0	0
14:00	0	0	0
14:15	1	1	2
14:30	2	2	4
14:45	3	3	6
15:00	9	9	18
15:15	7	7	14
15:30	5	5	10
15:45	1	1	2
16:00	0	0	0
16:15	0	0	0
16:30	0	0	0
16:45	0	0	0
17:00	0	0	0
17:15	0	0	0
17:30	0	0	0
17:45	0	0	0
18:00	0	0	0
18:15	0	0	0
18:30	0	0	0
18:45	0	0	0
19:00	0	0	0
19:15	0	0	0
19:30	0	0	0
19:45	0	0	0
20:00	0	0	0
20:15	0	0	0
20:30	0	0	0
20:45	0	0	0
21:00	0	0	0
21:15	0	0	0
21:30	0	0	0
21:45	0	0	0
22:00	0	0	0
22:15	0	0	0
22:30	0	0	0
22:45	0	0	0
23:00	0	0	0
23:15	0	0	0
23:30	0	0	0
23:45	0	0	0

PM TOTAL	28	28	56
----------	----	----	----

24 HOUR TOTAL	39	39	78
---------------	----	----	----

24 Hour Driveway Counts

LOCATION: 12421/12381 Newport Avenue
 Totals
 County: Orange

DATE: 3/18/2025
 DAY: Tuesday

AM PERIOD			
Time	Entering	Exiting	TOTAL
0:00	0	0	0
0:15	0	0	0
0:30	0	0	0
0:45	0	0	0
1:00	0	0	0
1:15	0	0	0
1:30	0	0	0
1:45	0	0	0
2:00	0	0	0
2:15	0	0	0
2:30	0	0	0
2:45	0	0	0
3:00	0	0	0
3:15	0	0	0
3:30	0	0	0
3:45	0	0	0
4:00	0	0	0
4:15	1	0	1
4:30	0	1	1
4:45	0	0	0
5:00	1	0	1
5:15	0	0	0
5:30	0	0	0
5:45	1	0	1
6:00	0	0	0
6:15	0	0	0
6:30	1	0	1
6:45	2	0	2
7:00	18	5	23
7:15	11	6	17
7:30	19	16	35
7:45	73	48	121
8:00	102	85	187
8:15	59	77	136
8:30	17	18	35
8:45	6	7	13
9:00	6	4	10
9:15	1	3	4
9:30	1	1	2
9:45	0	0	0
10:00	1	1	2
10:15	0	2	2
10:30	0	3	3
10:45	4	2	6
11:00	1	0	1
11:15	7	6	13
11:30	1	2	3
11:45	3	3	6

AM TOTAL	336	290	626
----------	-----	-----	-----

PM PERIOD			
Time	Entering	Exiting	TOTAL
12:00	5	9	14
12:15	4	5	9
12:30	4	5	9
12:45	8	6	14
13:00	5	3	8
13:15	3	2	5
13:30	1	2	3
13:45	2	2	4
14:00	3	7	10
14:15	12	4	16
14:30	18	16	34
14:45	39	31	70
15:00	44	43	87
15:15	67	62	129
15:30	57	67	124
15:45	18	45	63
16:00	8	13	21
16:15	13	18	31
16:30	11	16	27
16:45	4	5	9
17:00	6	8	14
17:15	4	9	13
17:30	0	0	0
17:45	0	3	3
18:00	0	0	0
18:15	0	0	0
18:30	0	0	0
18:45	0	1	1
19:00	2	0	2
19:15	0	0	0
19:30	0	1	1
19:45	0	0	0
20:00	0	0	0
20:15	0	0	0
20:30	1	0	1
20:45	0	0	0
21:00	0	1	1
21:15	0	0	0
21:30	0	0	0
21:45	0	0	0
22:00	0	0	0
22:15	0	0	0
22:30	0	0	0
22:45	0	0	0
23:00	0	1	1
23:15	0	0	0
23:30	0	0	0
23:45	0	0	0

PM TOTAL	339	385	724
----------	-----	-----	-----

24 HOUR TOTAL	675	675	1350
---------------	-----	-----	------

24 Hour Driveway Counts

LOCATION: 12421/12381 Newport Avenue
Multiple Entry/Exit Counts
 County: Orange

DATE: 3/18/2025
 DAY: Tuesday

AM PERIOD			
Time	Entering	Exiting	TOTAL
0:00	0	0	0
0:15	0	0	0
0:30	0	0	0
0:45	0	0	0
1:00	0	0	0
1:15	0	0	0
1:30	0	0	0
1:45	0	0	0
2:00	0	0	0
2:15	0	0	0
2:30	0	0	0
2:45	0	0	0
3:00	0	0	0
3:15	0	0	0
3:30	0	0	0
3:45	0	0	0
4:00	0	0	0
4:15	0	0	0
4:30	0	0	0
4:45	0	0	0
5:00	0	0	0
5:15	0	0	0
5:30	0	0	0
5:45	0	0	0
6:00	0	0	0
6:15	0	0	0
6:30	0	0	0
6:45	0	0	0
7:00	0	0	0
7:15	1	1	2
7:30	4	4	8
7:45	5	5	10
8:00	4	4	8
8:15	3	3	6
8:30	1	1	2
8:45	0	0	0
9:00	0	0	0
9:15	0	0	0
9:30	0	0	0
9:45	0	0	0
10:00	0	0	0
10:15	0	0	0
10:30	0	0	0
10:45	0	0	0
11:00	0	0	0
11:15	0	0	0
11:30	0	0	0
11:45	0	0	0

AM TOTAL	18	18	36
----------	----	----	----

PM PERIOD			
Time	Entering	Exiting	TOTAL
12:00	0	0	0
12:15	0	0	0
12:30	0	0	0
12:45	0	0	0
13:00	0	0	0
13:15	0	0	0
13:30	0	0	0
13:45	0	0	0
14:00	0	0	0
14:15	1	1	2
14:30	0	0	0
14:45	2	2	4
15:00	6	6	12
15:15	6	6	12
15:30	5	5	10
15:45	1	1	2
16:00	0	0	0
16:15	4	4	8
16:30	0	0	0
16:45	0	0	0
17:00	0	0	0
17:15	0	0	0
17:30	0	0	0
17:45	0	0	0
18:00	0	0	0
18:15	0	0	0
18:30	0	0	0
18:45	0	0	0
19:00	0	0	0
19:15	0	0	0
19:30	0	0	0
19:45	0	0	0
20:00	0	0	0
20:15	0	0	0
20:30	0	0	0
20:45	0	0	0
21:00	0	0	0
21:15	0	0	0
21:30	0	0	0
21:45	0	0	0
22:00	0	0	0
22:15	0	0	0
22:30	0	0	0
22:45	0	0	0
23:00	0	0	0
23:15	0	0	0
23:30	0	0	0
23:45	0	0	0

PM TOTAL	25	25	50
----------	----	----	----

24 HOUR TOTAL	43	43	86
---------------	----	----	----

24 Hour Driveway Counts

LOCATION: 12421/12381 Newport Avenue
TOTAL Excluding Multi-Trips
 County: Orange

DATE: 3/18/2025
 DAY: Tuesday

AM PERIOD			
Time	Entering	Exiting	TOTAL
0:00	0	0	0
0:15	0	0	0
0:30	0	0	0
0:45	0	0	0
1:00	0	0	0
1:15	0	0	0
1:30	0	0	0
1:45	0	0	0
2:00	0	0	0
2:15	0	0	0
2:30	0	0	0
2:45	0	0	0
3:00	0	0	0
3:15	0	0	0
3:30	0	0	0
3:45	0	0	0
4:00	0	0	0
4:15	1	0	1
4:30	0	1	1
4:45	0	0	0
5:00	1	0	1
5:15	0	0	0
5:30	0	0	0
5:45	1	0	1
6:00	0	0	0
6:15	0	0	0
6:30	1	0	1
6:45	2	0	2
7:00	18	5	23
7:15	10	5	15
7:30	15	12	27
7:45	68	43	111
8:00	98	81	179
8:15	56	74	130
8:30	16	17	33
8:45	6	7	13
9:00	6	4	10
9:15	1	3	4
9:30	1	1	2
9:45	0	0	0
10:00	1	1	2
10:15	0	2	2
10:30	0	3	3
10:45	4	2	6
11:00	1	0	1
11:15	7	6	13
11:30	1	2	3
11:45	3	3	6

AM TOTAL	318	272	590
----------	-----	-----	-----

PM PERIOD			
Time	Entering	Exiting	TOTAL
12:00	5	9	14
12:15	4	5	9
12:30	4	5	9
12:45	8	6	14
13:00	5	3	8
13:15	3	2	5
13:30	1	2	3
13:45	2	2	4
14:00	3	7	10
14:15	11	3	14
14:30	18	16	34
14:45	37	29	66
15:00	38	37	75
15:15	61	56	117
15:30	52	62	114
15:45	17	44	61
16:00	8	13	21
16:15	9	14	23
16:30	11	16	27
16:45	4	5	9
17:00	6	8	14
17:15	4	9	13
17:30	0	0	0
17:45	0	3	3
18:00	0	0	0
18:15	0	0	0
18:30	0	0	0
18:45	0	1	1
19:00	2	0	2
19:15	0	0	0
19:30	0	1	1
19:45	0	0	0
20:00	0	0	0
20:15	0	0	0
20:30	1	0	1
20:45	0	0	0
21:00	0	1	1
21:15	0	0	0
21:30	0	0	0
21:45	0	0	0
22:00	0	0	0
22:15	0	0	0
22:30	0	0	0
22:45	0	0	0
23:00	0	1	1
23:15	0	0	0
23:30	0	0	0
23:45	0	0	0

PM TOTAL	314	360	674
----------	-----	-----	-----

24 HOUR TOTAL	632	632	1264
---------------	-----	-----	------



Appendix A-II

Drop-Off/Pick-Up Queue Observation Counts

PICKUP/ DROPOFF SURVEY

LOCATION: Fairmont Private School, Newport Ave
CITY: County of Orange, CA

Tuesday
3/18/2025

TIME	Parking Lot Queue	Street Queue (Overflow)	TOTAL
7:00	0	0	0
7:05	1	0	1
7:10	5	0	5
7:15	4	0	4
7:20	2	0	2
7:25	2	0	2
7:30	1	0	1
7:35	1	0	1
7:40	2	0	2
7:45	0	0	0
7:50	1	0	1
7:55	7	0	7
8:00	8	2	10
8:05	18	0	18
8:10	11	0	11
8:15	15	0	15
8:20	10	0	10
8:25	12	0	12
8:30	0	0	0
8:35	5	0	5
8:40	2	0	2
8:45	4	0	4
8:50	4	0	4
8:55	2	0	2
9:00	1	0	1

PICKUP/ DROPOFF SURVEY

LOCATION: Fairmont Private School, Newport Ave
CITY: County of Orange, CA

Tuesday
3/18/2025

TIME	Parking Lot Queue	Street Queue (Overflow)	TOTAL
14:00	0	0	0
14:05	1	0	1
14:10	2	0	2
14:15	1	0	1
14:20	2	0	2
14:25	3	0	3
14:30	5	0	5
14:35	5	0	5
14:40	7	0	7
14:45	5	0	5
14:50	9	0	9
14:55	10	0	10
15:00	14	0	14
15:05	16	0	16
15:10	18	0	18
15:15	14	0	14
15:20	20	5	25
15:25	18	6	24
15:30	19	0	19
15:35	11	0	11
15:40	6	0	6
15:45	8	0	8
15:50	5	0	5
15:55	4	0	4
16:00	5	0	5

PICKUP/ DROPOFF SURVEY

LOCATION: Church, Vanderlip Ave
CITY: County of Orange, CA

Tuesday
3/18/2025

TIME	Parking Lot Queue	Street Queue (Overflow)	TOTAL
7:00	0	0	0
7:05	0	0	0
7:10	0	0	0
7:15	0	0	0
7:20	0	0	0
7:25	0	0	0
7:30	0	0	0
7:35	0	0	0
7:40	0	0	0
7:45	0	0	0
7:50	0	0	0
7:55	2	0	2
8:00	0	0	0
8:05	7	0	7
8:10	1	0	1
8:15	0	0	0
8:20	0	0	0
8:25	0	0	0
8:30	0	0	0
8:35	0	0	0
8:40	0	0	0
8:45	0	0	0
8:50	0	0	0
8:55	0	0	0
9:00	0	0	0

PICKUP/DROPOFF SURVEY

LOCATION: Church, Vanderlip Ave
CITY: County of Orange, CA

Tuesday
3/18/2025

TIME	Parking Lot Queue	Street Queue (Overflow)	TOTAL
14:00	0	0	0
14:05	0	0	0
14:10	0	0	0
14:15	0	0	0
14:20	0	0	0
14:25	1	0	1
14:30	0	0	0
14:35	0	0	0
14:40	0	0	0
14:45	0	0	0
14:50	0	0	0
14:55	0	0	0
15:00	0	0	0
15:05	0	0	0
15:10	0	0	0
15:15	0	0	0
15:20	0	0	0
15:25	1	0	1
15:30	0	0	0
15:35	1	0	1
15:40	0	0	0
15:45	0	0	0
15:50	0	0	0
15:55	0	0	0
16:00	0	0	0



Appendix A-III

Parking Demand Counts

Santa Ana
Fairmont Private School North Tustin Campus
12381-12421 Newport Avenue, Santa Ana

Tuesday, March 18th, 2025

		Inventory	7:00 AM	8:00 AM	9:00 AM	10:00 AM	11:00 AM	12:00 PM	1:00 PM	2:00 PM	3:00 PM	4:00 PM	5:00 PM
Zone 1 (Church/Performing Arts)	Regular	62	4	38	43	43	42	39	39	40	38	19	7
	Handicap	2	0	1	1	1	1	1	1	1	1	0	0
	Subtotal	64	4	39	44	44	43	40	40	41	39	19	7
Total Occupancy		64	4	39	44	44	43	40	40	41	39	19	7
Total Percent			6%	61%	69%	69%	67%	63%	63%	64%	61%	30%	11%
		Inventory	7:00 AM	8:00 AM	9:00 AM	10:00 AM	11:00 AM	12:00 PM	1:00 PM	2:00 PM	3:00 PM	4:00 PM	5:00 PM
Zone 2 (School North)	Regular	9	0	1	4	4	3	3	3	3	5	4	2
	Handicap	2	0	0	0	0	0	0	0	0	0	0	0
	Subtotal	11	0	1	4	4	3	3	3	3	5	4	2
Total Occupancy		11	0	1	4	4	3	3	3	3	5	4	2
Total Percent			0%	9%	36%	36%	27%	27%	27%	27%	45%	36%	18%
		Inventory	7:00 AM	8:00 AM	9:00 AM	10:00 AM	11:00 AM	12:00 PM	1:00 PM	2:00 PM	3:00 PM	4:00 PM	5:00 PM
Zone 3 (School South)	Regular (Staff)	12	1	4	2	1	1	1	1	2	7	3	0
	Illegal - Red Curb	-	0	0	0	0	0	3	1	0	0	2	3
	Subtotal	12	1	4	2	1	1	4	2	2	7	5	3
Total Occupancy		12	1	4	2	1	1	4	2	2	7	5	3
Total Percent			8%	33%	17%	8%	8%	33%	17%	17%	58%	42%	25%
		Inventory	7:00 AM	8:00 AM	9:00 AM	10:00 AM	11:00 AM	12:00 PM	1:00 PM	2:00 PM	3:00 PM	4:00 PM	5:00 PM
Zone 4 (Small Lot South)	Regular	4	1	3	3	3	2	3	2	3	2	0	0
	-	-	-	-	-	-	-	-	-	-	-	-	-
	Subtotal	4	1	3	3	3	2	3	2	3	2	0	0
Total Occupancy		4	1	3	3	3	2	3	2	3	2	0	0
Total Percent			25%	75%	75%	75%	50%	75%	50%	75%	50%	0%	0%
		Inventory	7:00 AM	8:00 AM	9:00 AM	10:00 AM	11:00 AM	12:00 PM	1:00 PM	2:00 PM	3:00 PM	4:00 PM	5:00 PM
Zone 5 (Newport Ave)	Regular (On-street)	15	0	2	0	0	0	0	0	0	1	0	0
	-	-	-	-	-	-	-	-	-	-	-	-	-
	Subtotal	15	0	2	0	0	0	0	0	0	1	0	0
Total Occupancy		15	0	2	0	0	0	0	0	0	1	0	0
Total Percent			0%	13%	0%	0%	0%	0%	0%	0%	7%	0%	0%



Appendix A-IV

Turning Movement Counts

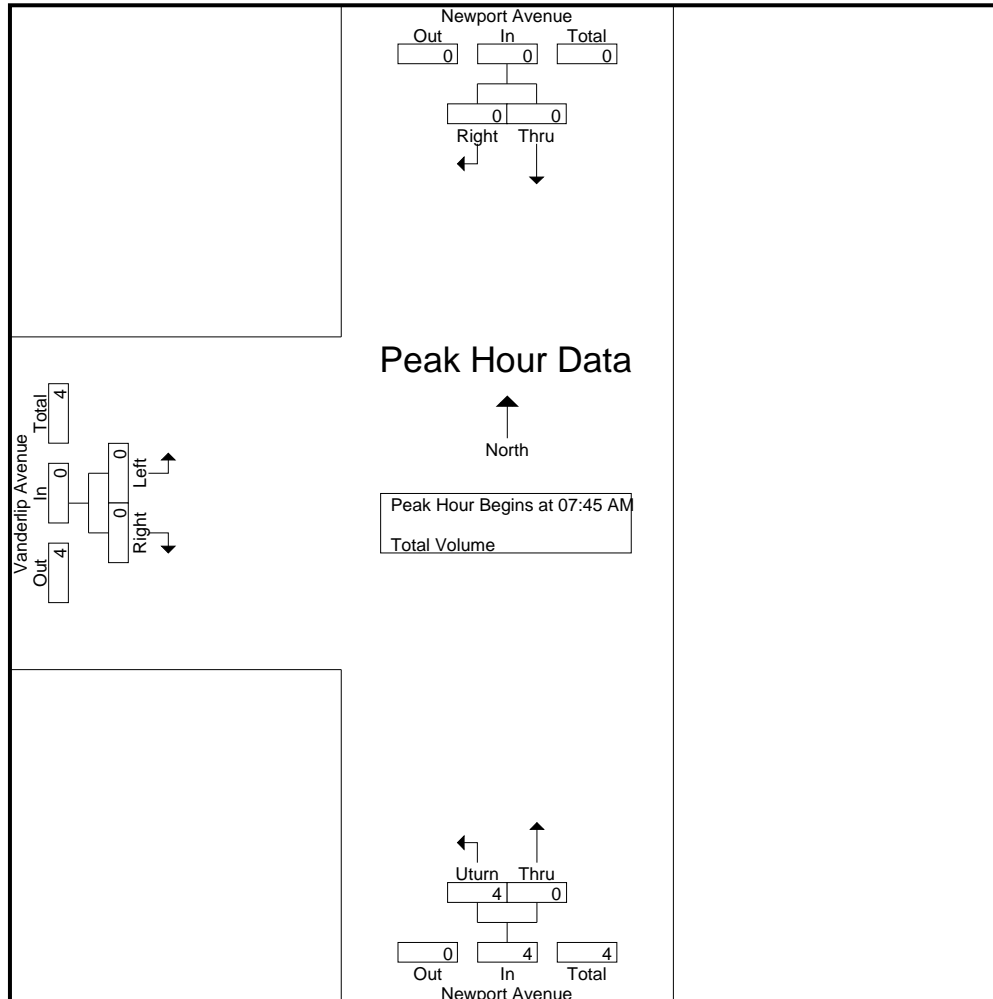
County of Orange
N/S: Newport Avenue
E/W: Vanderlip Avenue
Weather: Clear

File Name : ORCNEVLAMUT
Site Code : 10525266
Start Date : 3/18/2025
Page No : 1

Groups Printed- Total Volume

	Newport Avenue Southbound			Newport Avenue Northbound			Vanderlip Avenue Eastbound			
Start Time	Thru	Right	App. Total	Utun	Thru	App. Total	Left	Right	App. Total	Int. Total
07:00 AM	0	0	0	0	0	0	0	0	0	0
07:15 AM	0	0	0	0	0	0	0	0	0	0
07:30 AM	0	0	0	0	0	0	0	0	0	0
07:45 AM	0	0	0	1	0	1	0	0	0	1
Total	0	0	0	1	0	1	0	0	0	1
08:00 AM	0	0	0	0	0	0	0	0	0	0
08:15 AM	0	0	0	2	0	2	0	0	0	2
08:30 AM	0	0	0	1	0	1	0	0	0	1
08:45 AM	0	0	0	0	0	0	0	0	0	0
Total	0	0	0	3	0	3	0	0	0	3
Grand Total	0	0	0	4	0	4	0	0	0	4
Apprch %	0	0		100	0		0	0		
Total %	0	0	0	100	0	100	0	0	0	

	Newport Avenue Southbound			Newport Avenue Northbound			Vanderlip Avenue Eastbound			
Start Time	Thru	Right	App. Total	Utun	Thru	App. Total	Left	Right	App. Total	Int. Total
Peak Hour Analysis From 07:00 AM to 08:45 AM - Peak 1 of 1										
Peak Hour for Entire Intersection Begins at 07:45 AM										
07:45 AM	0	0	0	1	0	1	0	0	0	1
08:00 AM	0	0	0	0	0	0	0	0	0	0
08:15 AM	0	0	0	2	0	2	0	0	0	2
08:30 AM	0	0	0	1	0	1	0	0	0	1
Total Volume	0	0	0	4	0	4	0	0	0	4
% App. Total	0	0		100	0		0	0		
PHF	.000	.000	.000	.500	.000	.500	.000	.000	.000	.500



Peak Hour Analysis From 07:00 AM to 08:45 AM - Peak 1 of 1
Peak Hour for Each Approach Begins at:

	07:00 AM			07:45 AM			07:00 AM		
+0 mins.	0	0	0	1	0	1	0	0	0
+15 mins.	0	0	0	0	0	0	0	0	0
+30 mins.	0	0	0	2	0	2	0	0	0
+45 mins.	0	0	0	1	0	1	0	0	0
Total Volume	0	0	0	4	0	4	0	0	0
% App. Total	0	0	0	100	0	0	0	0	0
PHF	.000	.000	.000	.500	.000	.500	.000	.000	.000

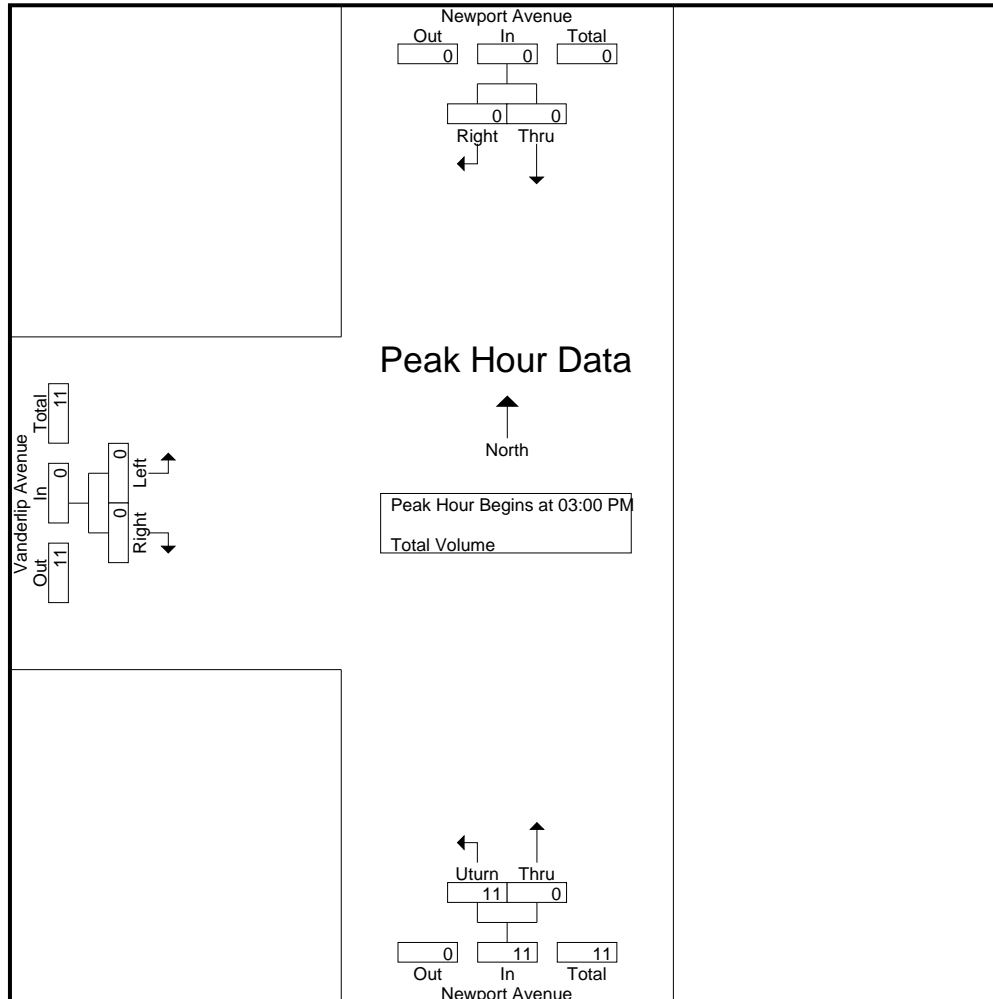
County of Orange
N/S: Newport Avenue
E/W: Vanderlip Avenue
Weather: Clear

File Name : ORCNEVLPMUT
Site Code : 10525266
Start Date : 3/18/2025
Page No : 1

Groups Printed- Total Volume

	Newport Avenue Southbound			Newport Avenue Northbound			Vanderlip Avenue Eastbound			
Start Time	Thru	Right	App. Total	Utun	Thru	App. Total	Left	Right	App. Total	Int. Total
02:00 PM	0	0	0	0	0	0	0	0	0	0
02:15 PM	0	0	0	1	0	1	0	0	0	1
02:30 PM	0	0	0	1	0	1	0	0	0	1
02:45 PM	0	0	0	3	0	3	0	0	0	3
Total	0	0	0	5	0	5	0	0	0	5
03:00 PM	0	0	0	2	0	2	0	0	0	2
03:15 PM	0	0	0	3	0	3	0	0	0	3
03:30 PM	0	0	0	1	0	1	0	0	0	1
03:45 PM	0	0	0	5	0	5	0	0	0	5
Total	0	0	0	11	0	11	0	0	0	11
Grand Total	0	0	0	16	0	16	0	0	0	16
Apprch %	0	0		100	0		0	0		
Total %	0	0	0	100	0	100	0	0	0	

	Newport Avenue Southbound			Newport Avenue Northbound			Vanderlip Avenue Eastbound			
Start Time	Thru	Right	App. Total	Utun	Thru	App. Total	Left	Right	App. Total	Int. Total
Peak Hour Analysis From 02:00 PM to 03:45 PM - Peak 1 of 1										
Peak Hour for Entire Intersection Begins at 03:00 PM										
03:00 PM	0	0	0	2	0	2	0	0	0	2
03:15 PM	0	0	0	3	0	3	0	0	0	3
03:30 PM	0	0	0	1	0	1	0	0	0	1
03:45 PM	0	0	0	5	0	5	0	0	0	5
Total Volume	0	0	0	11	0	11	0	0	0	11
% App. Total	0	0		100	0		0	0		
PHF	.000	.000	.000	.550	.000	.550	.000	.000	.000	.550



Peak Hour Analysis From 02:00 PM to 03:45 PM - Peak 1 of 1
Peak Hour for Each Approach Begins at:

	02:00 PM			03:00 PM			02:00 PM		
+0 mins.	0	0	0	2	0	2	0	0	0
+15 mins.	0	0	0	3	0	3	0	0	0
+30 mins.	0	0	0	1	0	1	0	0	0
+45 mins.	0	0	0	5	0	5	0	0	0
Total Volume	0	0	0	11	0	11	0	0	0
% App. Total	0	0	0	100	0		0	0	
PHF	.000	.000	.000	.550	.000	.550	.000	.000	.000