
5.13 Recreation

This section discusses the potential park and recreation impacts associated with the Proposed Project. The information in this section is based on the Recreation Elements of the Orange County General Plan and the Yorba Linda General Plan (Yorba Linda GP). The analysis examines the existing and future parks and recreation opportunities in the project vicinity and the potential impacts of the Proposed Project on these resources.

5.13.1 Existing Conditions

1. Parks and Recreation Opportunities

There are a number of County and local parks and recreation areas surrounding the Project Area. Following is a brief description of the facilities currently available within the Project Area.

a. State/Regional/Local Parks

Several regional parks, public parks, and recreation areas are in close proximity to the Project Area. Chino Hills State Park is located to the north and east of the Project Site. Regional parks located within close proximity to the project are Carbon Canyon Regional Park, Yorba Regional Park, Craig Regional Park, and Featherly Park.

- Chino Hills State Park is located in Orange, Riverside, and San Bernardino counties as shown on Exhibit 5-2 – Chino Hills State Park Map (page 5-7). The park encompasses approximately 11,770 acres, most of which is rolling hills. The park provides visitors a place to explore and recreate at their leisure within a large area of relatively undeveloped land. An area at the end of the entrance road (Carbon Canyon Road) offers Discovery Center, a place for visitor parking and access to the trail network. In addition to the trails, the park offers an equestrian staging area also utilized for special events, a campground area, picnic areas, and scenic overlooks. The park contains approximately 50 miles of roads and trails, including single- and double-track trails and dirt roads for hiking, jogging, mountain biking, and horseback riding.
- Carbon Canyon Regional Park (Brea) is an approximately 125-acre park situated within a floodplain at the base of the Carbon Canyon Dam and accessible from Carbon Canyon Road. Facilities include restrooms, picnic shelters, barbecues, picnic

Acronyms used in this section:

CEQA	California Environmental Quality Act
VHFHSZ	Very High Fire Hazard Severity Zone
WQMP	Water Quality Management Plan

tables, a four-acre fishing lake, equestrian trails, hiking trails and a bike trail. Active uses include a lighted tennis court complex, multi-purpose fields and play equipment.

- Yorba Regional Park (Anaheim) is a mile-long day use park at the mouth of Santa Ana Canyon. The park provides food concessions, 400 picnic tables, 200 barbecues, 4 lakes with connecting streams for paddle boating and fishing, bicycle trails, playgrounds, volleyball courts, horseshoe pits, 2 ball diamonds, and a physical fitness course.
- Ted Craig Regional Park (Fullerton) is a 124-acre park located at 3300 S. State College Boulevard. The park provides concessions, picnic areas/barbeques, baseball fields, basketball courts, horseshoe pits, volleyball courts, hiking and bicycle trails, a three-acre lake, a small botanical preserve, play lots, shelters and private party areas.
- Featherly Park (Yorba Linda) is a 315-acre natural riparian wilderness area in Santa Ana Canyon. The Santa Ana bikeway runs adjacent to the park. The park area includes a privately owned RV park (Canyon RV Park) with hook-ups, small cabins, and youth group camping areas. Canyon RV Park occupies 63 acres of the total 795-acre Featherly Wilderness Preserve. A visitor center and concession building are also offered.

Nearby city parks include:

- Jessamyn West Park, 19135 Yorba Linda Boulevard (baseball fields, basketball courts, sand volleyball courts)
- Fairmont Knolls Park, 4700 Fairmont Boulevard (tennis courts, open space)
- East Side Community Park, 5400 Eastside Circle (baseball and soccer fields)
- San Antonio Park, 4205 San Antonio (horse arena, playgrounds, grassy fields)
- Brush Canyon Park, 28300 Brush Canyon Drive (two large shaded picnic shelters, basketball court, tennis courts, playground, benches near playground, restrooms, dedicated parking lot)
- Box Canyon Park, 22400 Foxtail Drive (basketball court, picnic tables, playground, restrooms, street parking)

b. Hiking/Bicycle/Equestrian Trails

The County of Orange provides riding and hiking trails throughout the County, including several in the Project Area, as noted in the County's General Plan Recreation Element³⁶ and as depicted on Exhibit 5-109 – Master Plan of Regional Riding and Hiking Trails. In addition, Chino Hills State Park provides access points for linkages to existing trails. The existing County network of trails provides for the trail needs of equestrians, pedestrians (e.g., walkers, hikers, joggers) and bicyclists (non-motorized). These trails are located in areas that are regulated by the County for unincorporated areas. The trail system provides linkages with many local community trails throughout the County and trails from surrounding counties. The General Plan lists 52 trails within the County.

Chino Hills State Park to the north and east of the Project Site includes a trail network that gives access to the park's special places, including wooded riparian areas, open grasslands, and scenic viewpoints. The trails support active uses (e.g., jogging, hiking, mountain biking, horseback riding) and passive uses (e.g., bird watching, photography, nature study). Existing riding and hiking trails extend into Chino Hills State Park, and proposed bike trails are located west of the Project Site as noted on the County's Regional Park Trail Maps.

The City of Yorba Linda (City), south and west of the Project Site, provides a comprehensive system of riding and hiking trails and bikeways. Several trails in the City provide linkages to Chino Hills State Park and the Orange County Santa Ana River Trail facilities.

c. Open Space

The City is substantially built out, with a few remaining pockets of open space.

5.13.2 Regulatory Setting

1. County of Orange General Plan, Recreation Element

The California Planning, Zoning and Development Laws (*California Government Code* §66477 - Quimby Act) allow a jurisdiction to establish requirements for the dedication of local park acreage, in lieu fees or a combination of both for residential developments. The County of Orange Local Park Code requires 2.5 acres of land per 1,000 persons when residential dwelling units are proposed within the unincorporated areas of the County. The County of Orange General Plan, Recreation Element, sets forth a comprehensive strategy for the acquisition, development, operation, maintenance, management, and financing of county recreation facilities that are necessary to meet the County's existing and future recreation needs. The Recreation Element serves to guide and direct local government decision making regarding recreation issues and facilitates the coordination of local, regional, state, and federal efforts.

³⁶ County of Orange General Plan 2000, Recreation Element, page VII-20

The Recreation Element of the Orange County General Plan includes five main sections:

- Purpose of the Element
- Constraints and Opportunities
- Local Parks Component
- Regional Riding and Hiking Trails Component
- Regional Recreational Facilities Component

2. City of Yorba Linda General Plan

The Recreation Resources Element of the Yorba Linda GP includes the following sections:

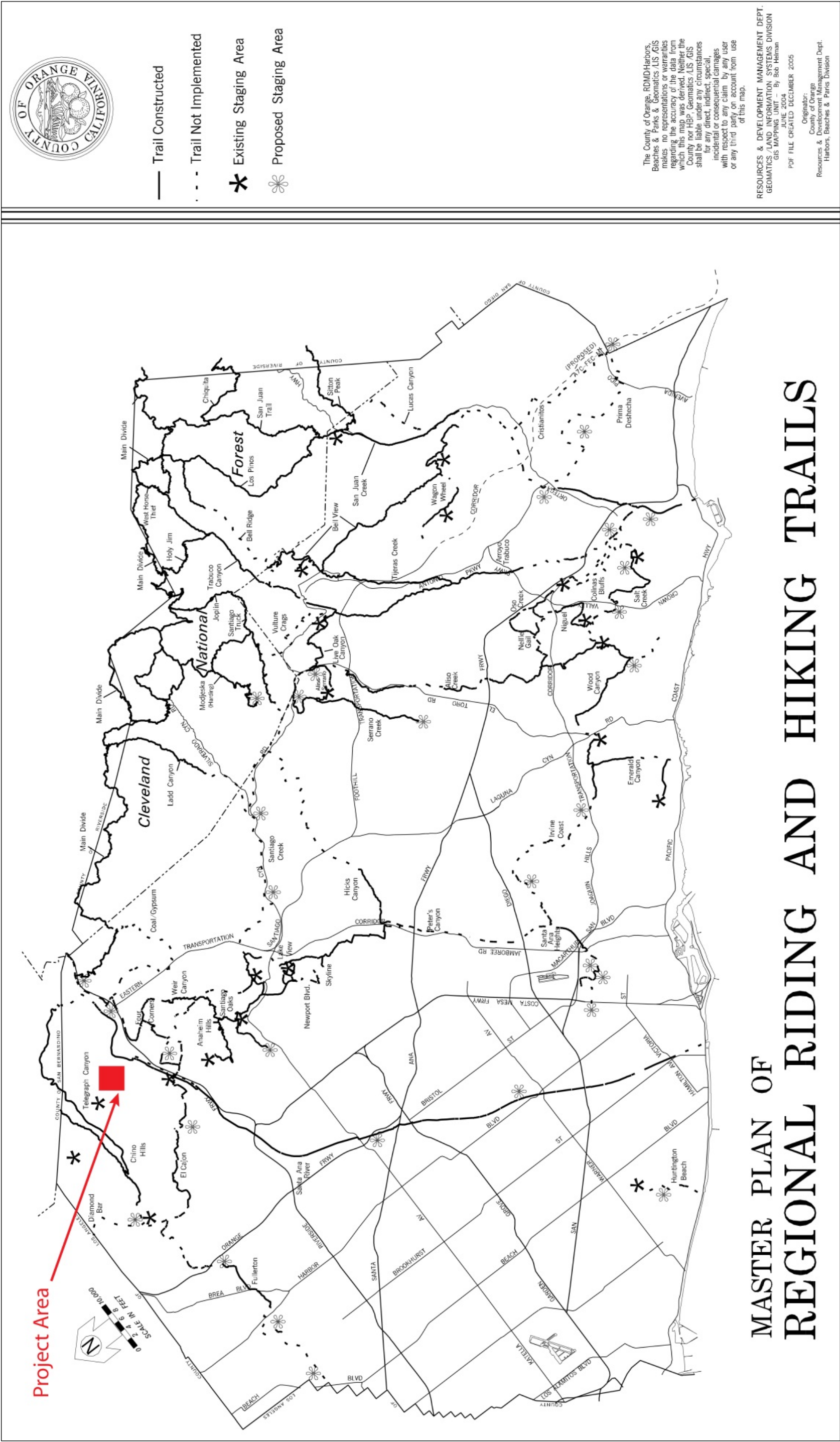
- Parks and Recreation Component
- Riding, Hiking and Bikeways Component
- Open Space Component
- Conservation Component

The Yorba Linda GP notes that the City values active recreation and supporting facilities with a goal toward providing park and recreational facilities to meet the needs of all segments of the City's population. The General Plan provides that 4.0 acres per 1,000 population be maintained as the City's parkland standard. This standard exceeds the Quimby Act standard for parkland dedication of 3.0 acres per 1,000 population.

5.13.3 Thresholds of Significance

The County uses the CEQA Checklist in Appendix G of the CEQA Guidelines to identify potentially significant impacts to recreation. The CEQA Checklist states that a project could have a significant impact if it would:

- a) Increase the use of existing neighborhood and regional parks or other recreational facilities such that substantial physical deterioration of the facility would occur or be accelerated
- b) Include recreational facilities or require the construction or expansion of recreational facilities which might have an adverse physical effect on the environment.



5.13.4 Project Impacts Prior to Mitigation

1. Park Acreage Requirements

The Quimby Act, enacted by the state in 1965, provides the implementation mechanism for local park development. The Quimby Act requirement is 3.0 acres of parkland for each 1,000 persons. The County of Orange Local Park Code provides for 2.5 acres per 1,000 persons, and the Yorba Linda GP requires 4.0 acres per 1,000 persons. Based on the County population factor of 3.2 persons per household, the project estimate is 1,088 persons in the Esperanza Hills community. Table 5-13-1 below depicts actual acres required for each threshold. Esperanza Hills will provide 13.16 acres of park area under Option 1 and 12.18 acres under Option 2. The Proposed Project will include a substantial number and variety of parks and trails in excess of City, County, and Quimby Act Requirements. While the additional population has the potential to use City and regional parks, provision of parks and trails within the Proposed Project will provide new residents with ample recreational opportunities on-site and will reduce impacts to less than significant.

Table 5-13-1 Park Acreage Requirements

Regulatory Document	Acres per 1,000 Persons	Total Acreage Required
Quimby Act	3.0 acres	3.3 acres
Orange County Local Park Code	2.5 acres	2.7 acres
Yorba Linda General Plan	4.0 acres	4.4 acres

Depending on the option selected, the Proposed Project will provide from 12.8 acres to 13.16 acres of active and passive parks that will be available to pedestrian, bicycle, or equestrian access from existing or proposed trails. The park acreage will be composed of nine parks, each with a different theme commemorating the County's agricultural heritage. In addition to the nine parks, two WQMP basins have been designed as bioretention facilities and would provide passive and active park use in addition to their functional uses. The parks and WQMP basins are similar under each access option.

Park I – Main Entry Orange Grove Park

1. Entry monumentation with guardhouse
2. Pedestrian portal colonnade over water body with dramatic fountain geysers and boulder-lined babbling brook
3. Orange grove with decomposed granite surface
4. Decorative Spanish pots
5. Park signage on low pilasters
6. Decorative benches
7. Decorative Spanish pots

Park A – Plum Grove Park

1. Park signage on low pilaster
2. Split rail fencing barrier
3. Plum grove on slope
4. Decorative stone planter wall with boulders
5. Multi-purpose path
6. Flagstone paving gathering area with picnic table
7. Decorative bench seating

Park B – Peach Grove Park

1. Park signage on low pilaster
2. Split rail fencing barrier
3. Peach grove with decomposed granite surface
4. 2- to 5-year-old tot lot with play structure on rubberized surface/sand
5. Multi-purpose path
6. Picnic tables on concrete pads
7. Decorative bench seating

Park C – Grape Vine Park

1. Park signage on low pilasters
3. Split rail fencing barrier
3. Grape vine orchard on supports over decomposed granite
4. 5- to 12-year-old and 2- to 5-year-old tot lots with play structures on rubberized surface
5. Spanish overhead colonnade over picnic tables
6. Raised railroad ties planter boxes with bench seating
7. Decorative bench seating

Park D – Tangerine Grove Park

1. Park signage on low pilasters with wood eyebrow trellis
2. Split rail fencing barrier
3. Tangerine orchard with decomposed granite surface
4. 5- to 12-year-old and 2- to 5-year-old tot lots with play structures on rubberized surface
5. Spanish overhead colonnade over picnic tables and pedestal barbeques
6. Stone serpentine wall with large decorative boulders
7. Decorative bench seating

Park E – Avocado Grove Park

1. Park signage on low pilasters
2. Multi-purpose path
3. Avocado tree orchard with decomposed granite surface
4. Decorative bench seating

Park F – Lemon/Lime Grove Park

1. Large decorative boulders with park signage
2. Split-rail fencing barrier
3. Lemon and lime orchards on slopes
4. Spanish theme hexagon lookout structure
5. Decorative bench seating

Park G – Grapefruit Grove Park

1. Large decorative boulders with park signage
2. Split rail fencing barrier
3. Grapefruit orchard with decomposed granite surface
4. 2- to 5-year-old tot lot with play structure on rubberized surface/sand
5. Rock climbing play structure
6. Spanish overhead structure over picnic tables and pedestal barbeques
7. Decorative bench seating

Park H – Bark Park Dog Park

1. Park signage on low pilasters
2. Multi-purpose path
3. Dog park amenities including water fountain, pet waste dispensers, and trash cans
4. Decorative bench seating
5. Signage of dog park rules

Park J – WQMP #1

1. Bench seating area
2. Fitness stations
3. Orchard on slope
4. Multi-purpose trail
5. Bioretention basin

Park K – WQMP #2

1. Bench seating area
2. Fitness stations
3. Passive seating area
4. Large decorative boulders with park signage
5. Orchard on slope
6. Bioretention basin
7. Multi-purpose trail

Table 5-13-2 provides park and WQMP basin information.

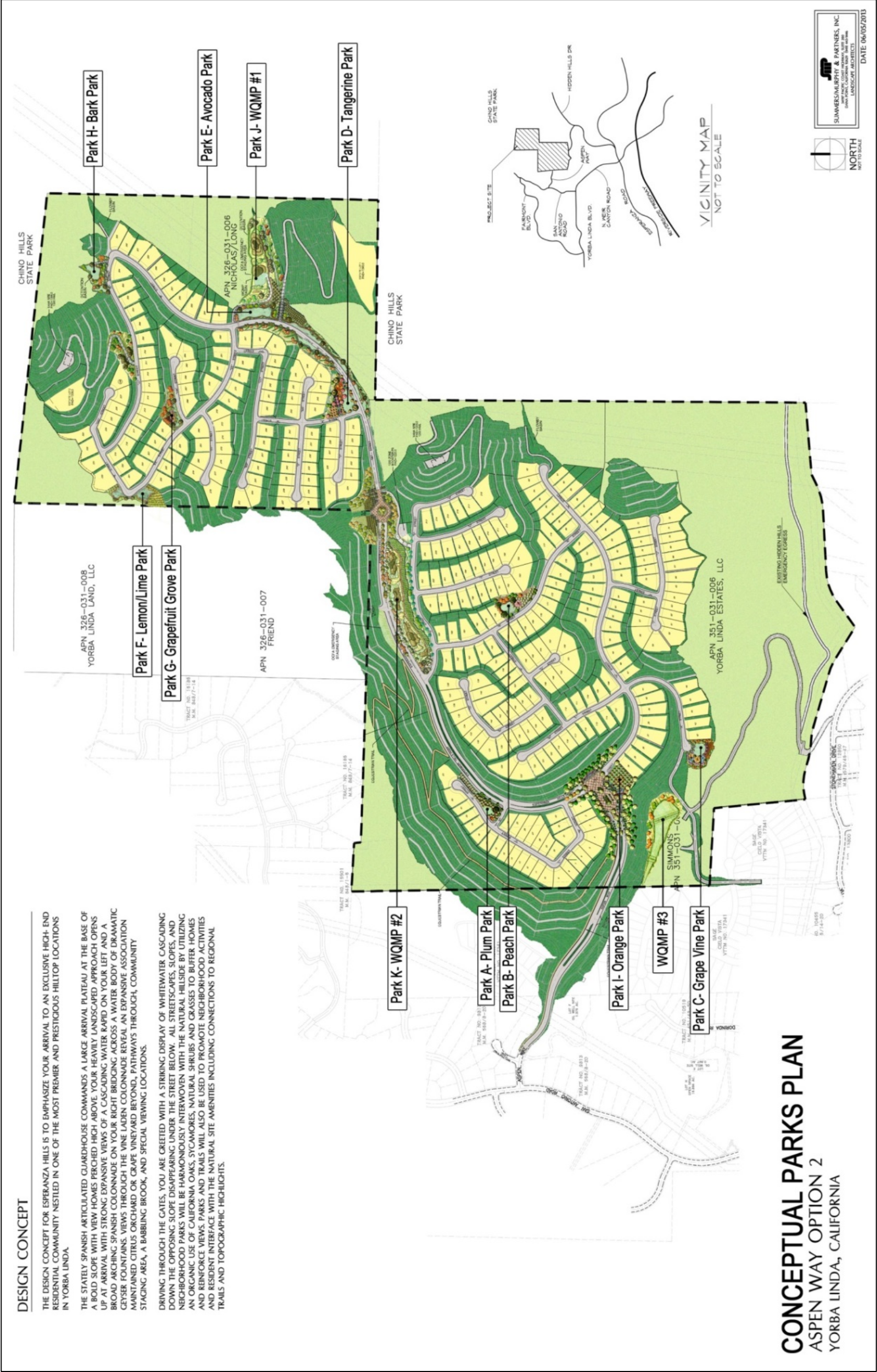
Table 5-13-2 Proposed Park and WQMP Sizes

Item	Item	Square Feet		Acres	
	Parks				
1	Park A - Plum Park	18,400		0.42	
2	Park B - Peach Park	24,430		0.56	
3	Park C – Grape Vine Park	25,300		0.58	
4	Park D – Tangerine Park	43,670		1.00	
5	Park E – Avocado Park	128,900		2.96	
6	Park F – Lemon/Lime Park	26,720		0.61	
7	Park G – Grapefruit Grove Park	16,300		0.37	
8	Park H – Bark Park	18,950		0.44	
9	Park I – Main Entry – Orange Park	Option 1 – 90,910	Option 2 – 47,945	Option 1 – 2.08	Option 2 – 1.10
	Total active parks	Option 1 – 393,580	Option 2 – 350,615	Option 1 – 9.03	Option 2 – 8.05
	WQMP/Park Areas				
1	Park J – WQMP #1	60,300		1.38	
2	Park K – Bioretention area/park/WQMP #2	119,650		2.75	
	Total WQMP/Park Area	179,950		4.13	
	Total Park and WQMP/Park Areas	Option 1 – 573,530	Option 2 – 530,565	Option 1 – 13.16	Option 2 – 12.18

The Proposed Project exceeds County, City, and Quimby Act standards for the provision of parkland by at least nine acres. Proposed park locations are depicted on Exhibit 5-110 – Conceptual Parks Plan, Stonehaven Drive Option 1 and Exhibit 5-111– Conceptual Parks Plan, Aspen Way Option 2.

Exhibit 5-112 through Exhibit 5-122 depict the conceptual details for each of the parks.

The Water Quality Management Plan basins in the parks have been designed as bioretention facilities for the treatment and filtration of storm water runoff. These facilities provide passive and active park use in addition to their functional uses and are further described in Section 5.8, Hydrology and Water Quality (beginning on page 5-341). The Project is proposed as a private gate-guarded community. However, non-vehicular public access to the parks will be provided via equestrian, hiking, and biking trails.



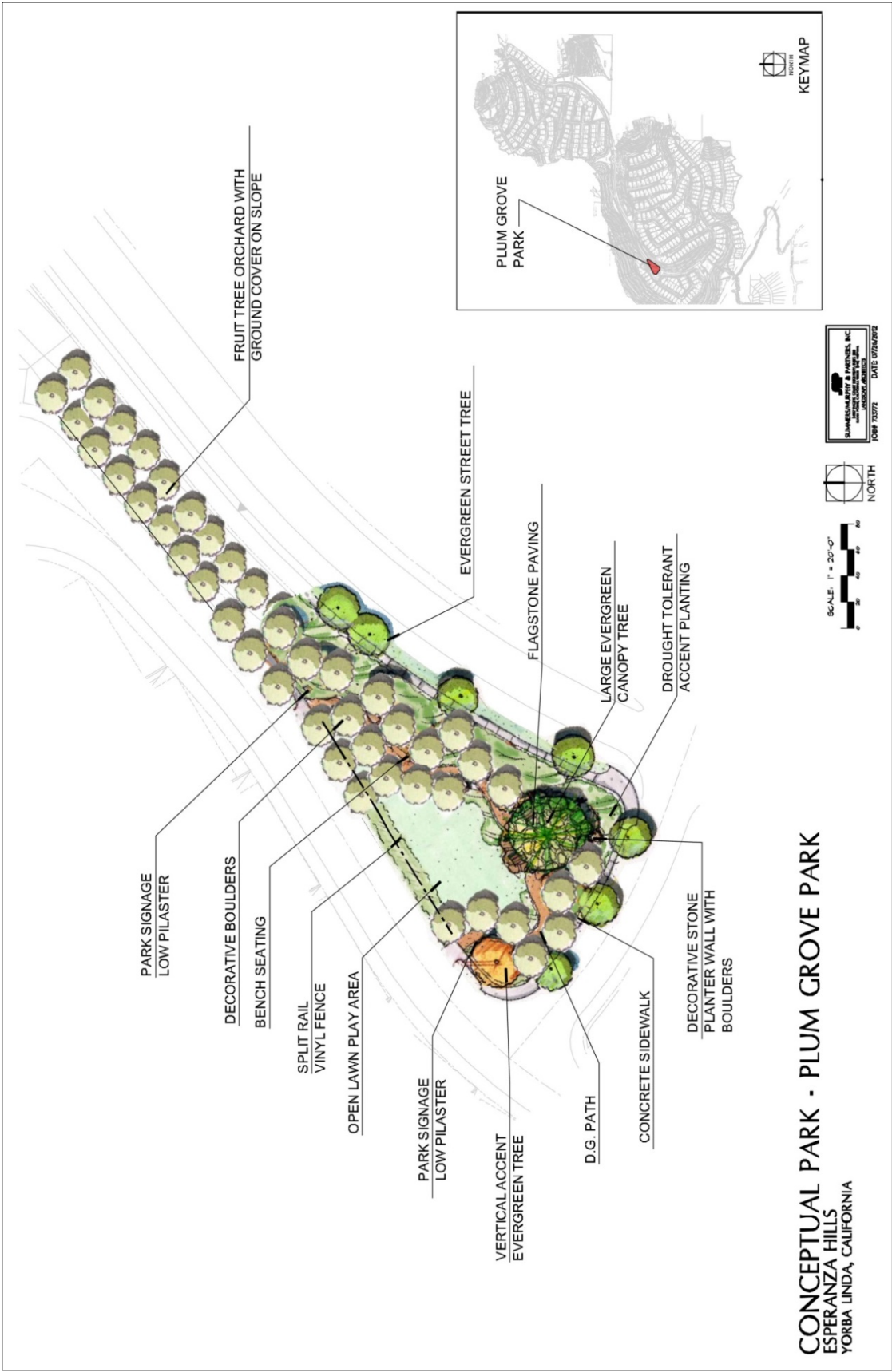


Exhibit 5-112 – Conceptual Park A, Plum Grove Park

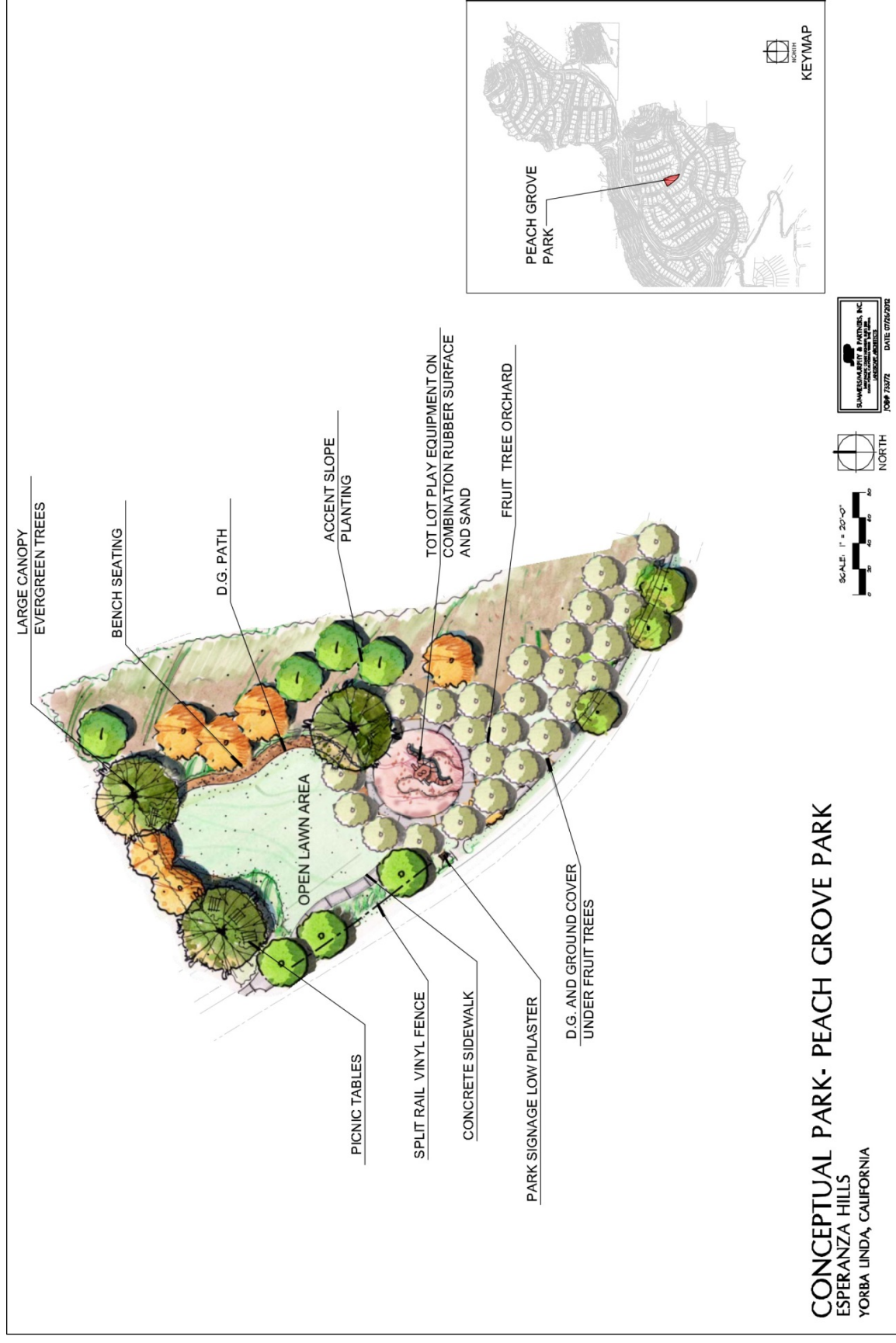


Exhibit 5-113 – Conceptual Park B, Peach Grove Park

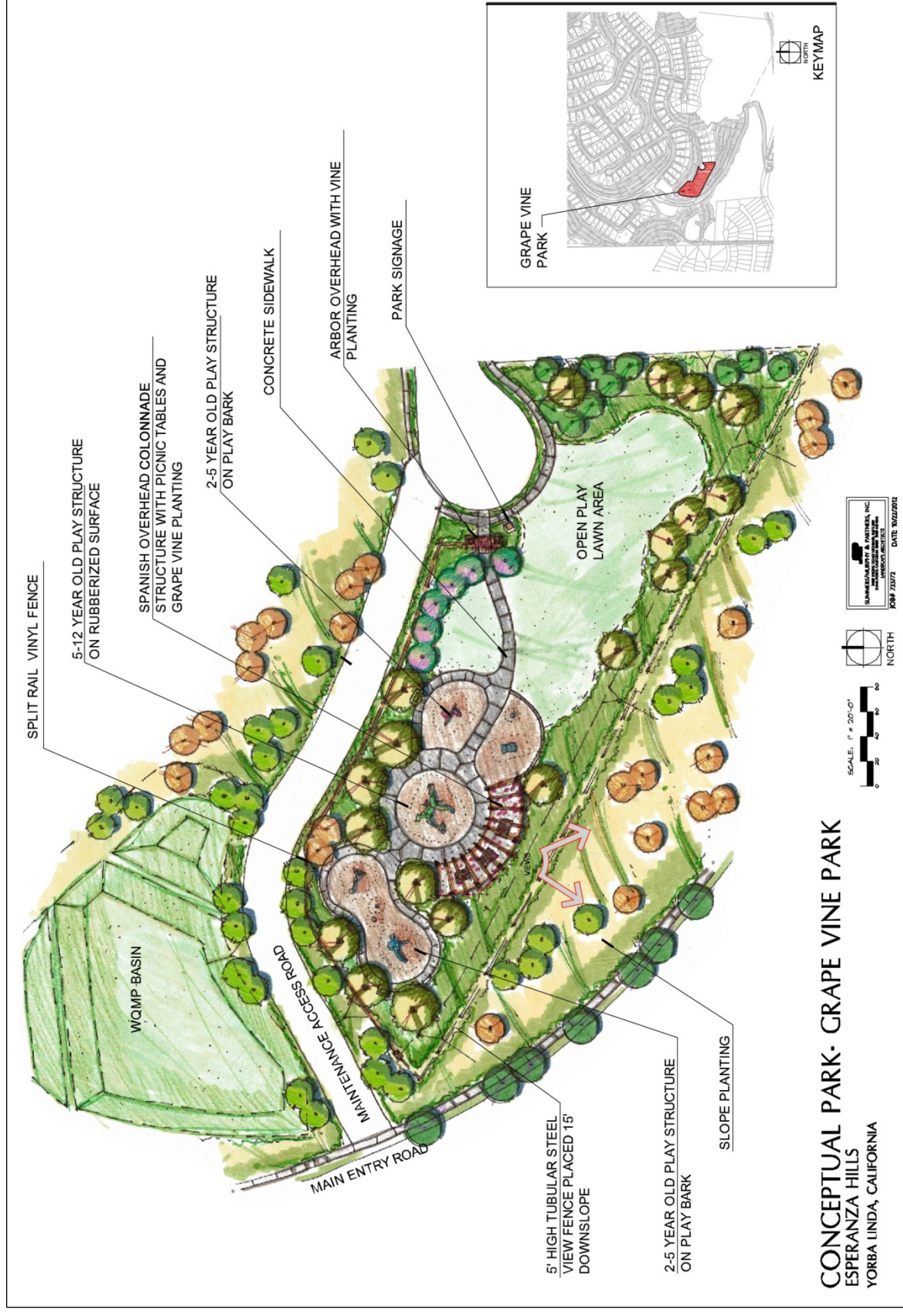


Exhibit 5-114 – Conceptual Park C, Grape Vine Park, Option 1

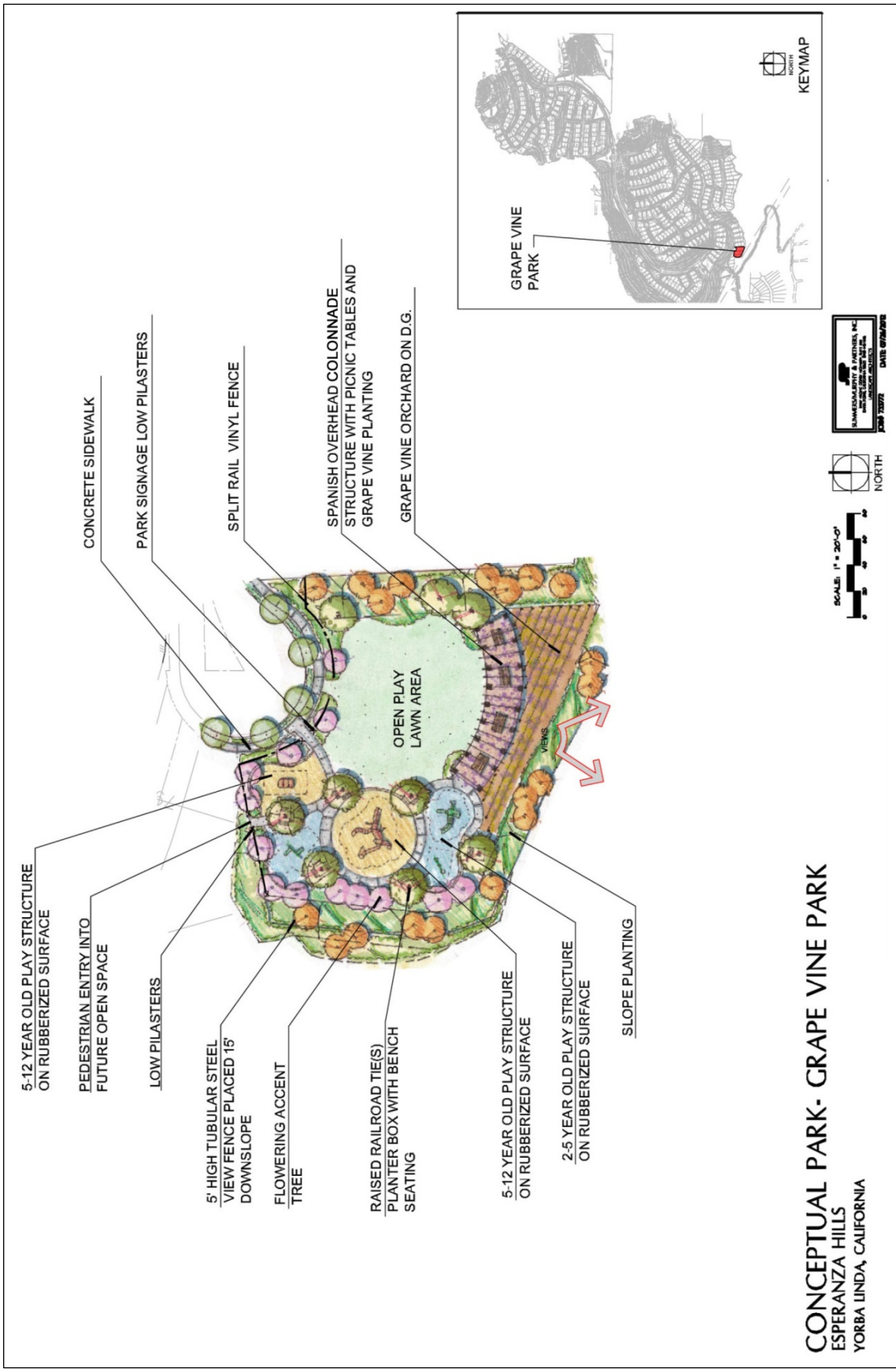


Exhibit 5-115 – Conceptual Park C, Grape Vine Park, Option 2

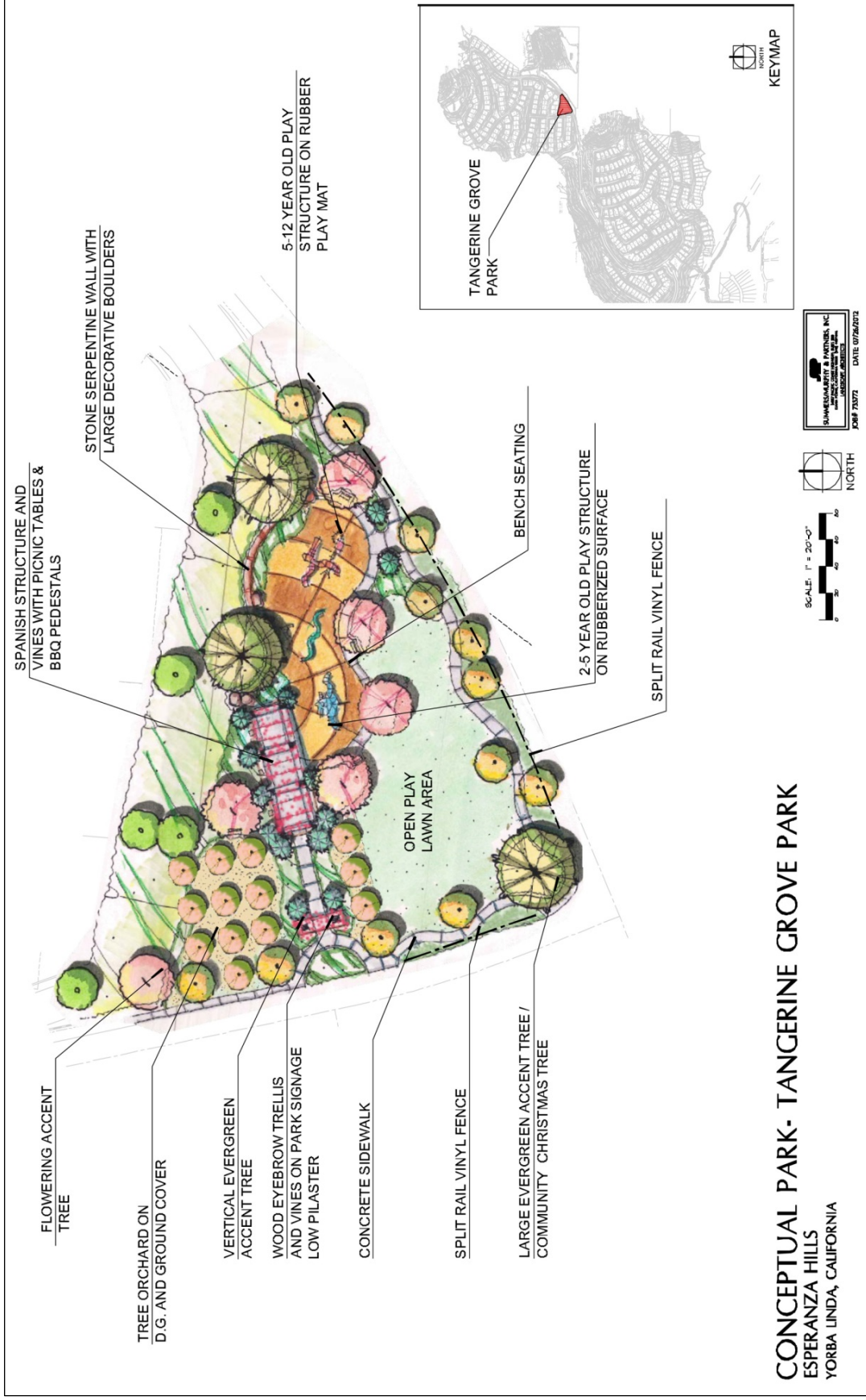


Exhibit 5-116 – Conceptual Park D, Tangerine Grove Park

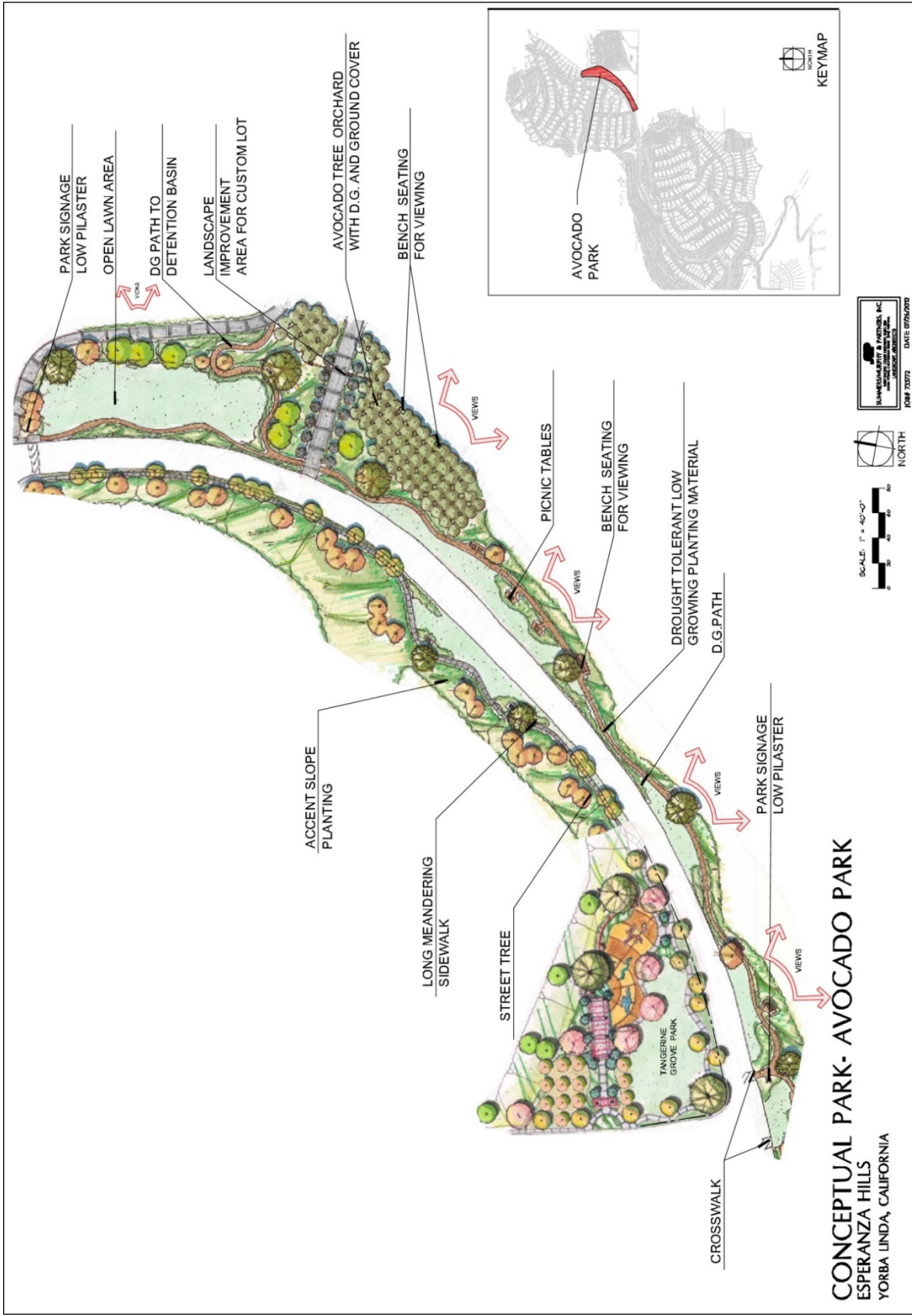


Exhibit 5-117 – Conceptual Park E, Avocado Park

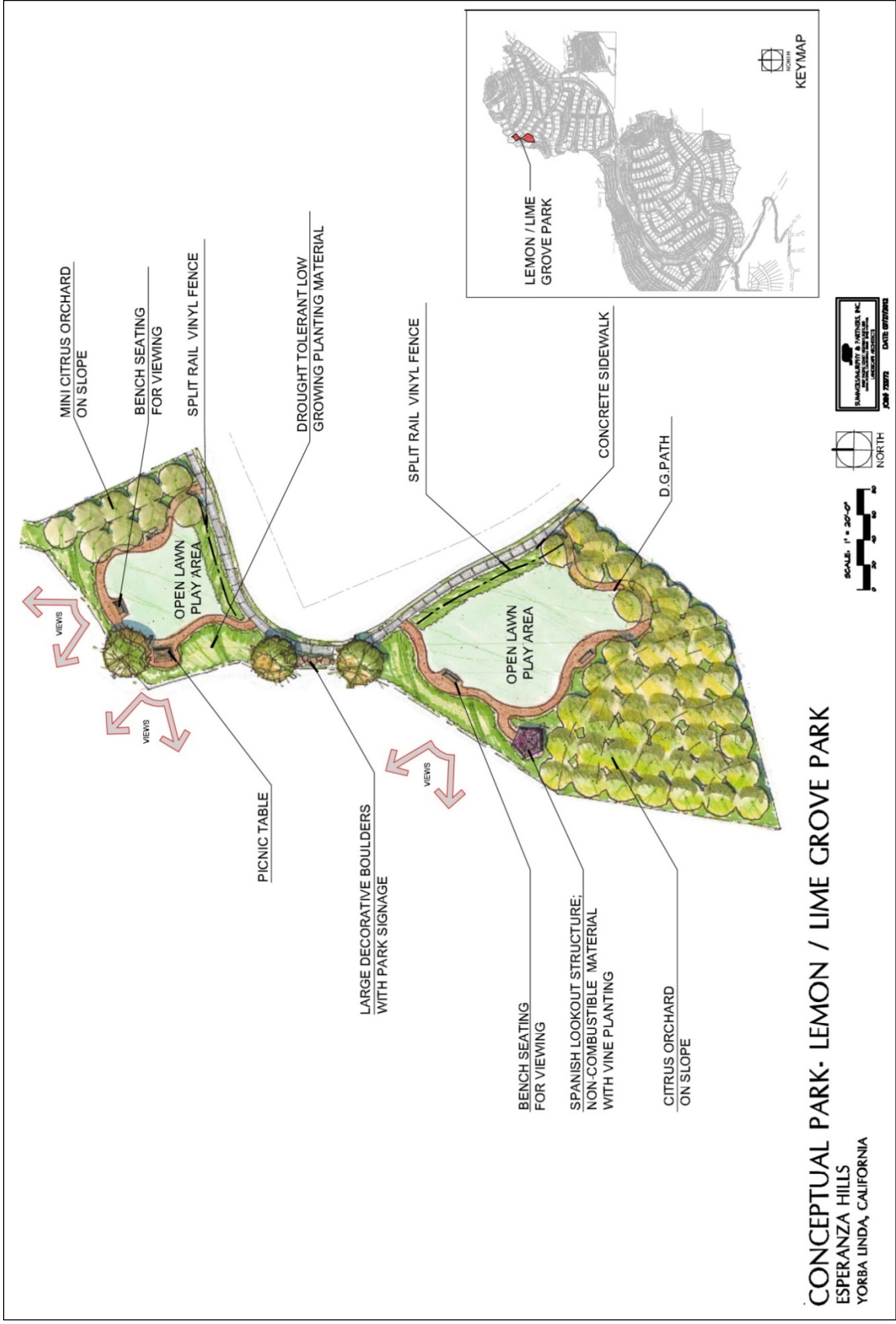


Exhibit 5-118 – Conceptual Park F, Lemon/Lime Grove Park

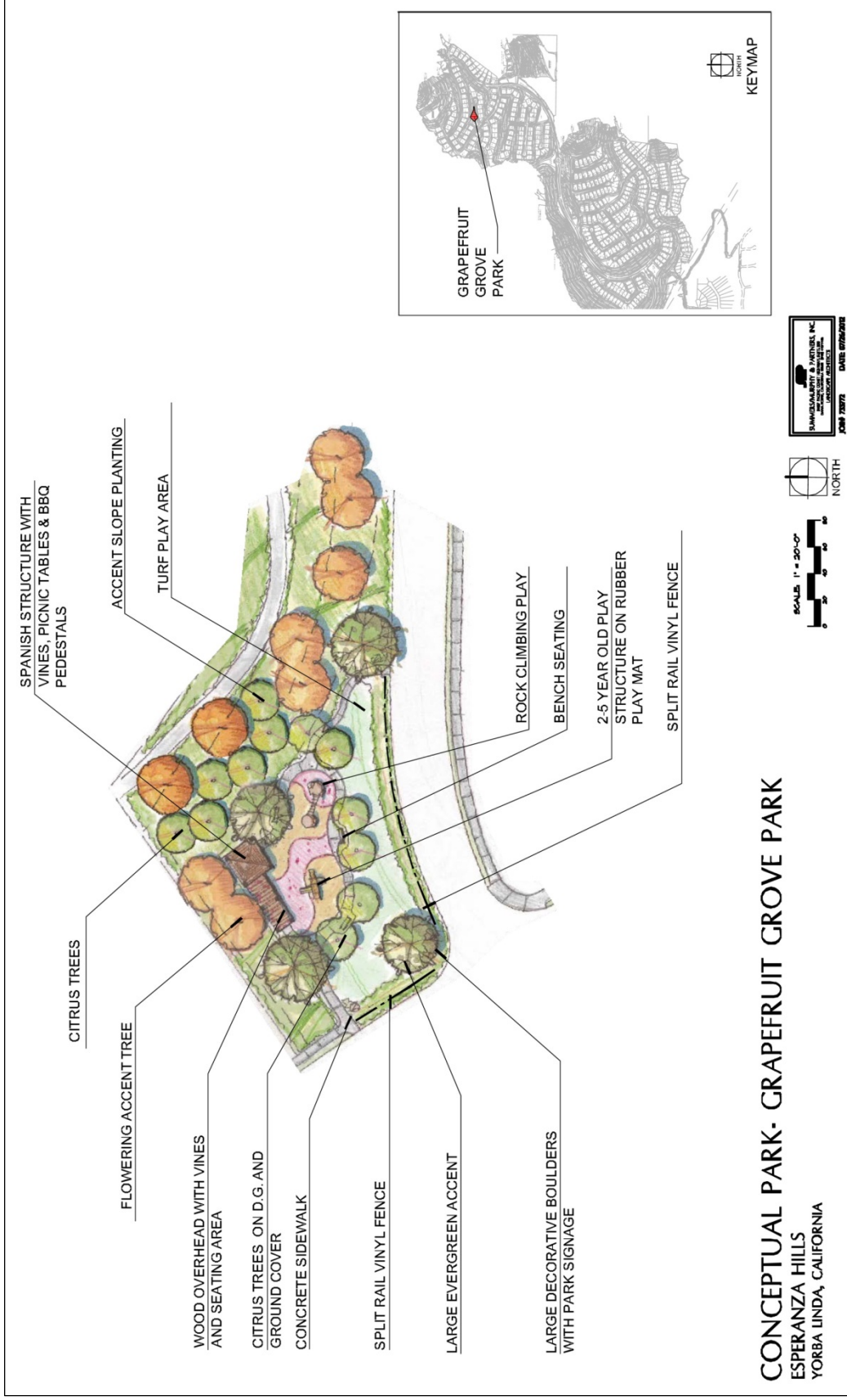


Exhibit 5-119 – Conceptual Park G, Grapefruit Grove Park

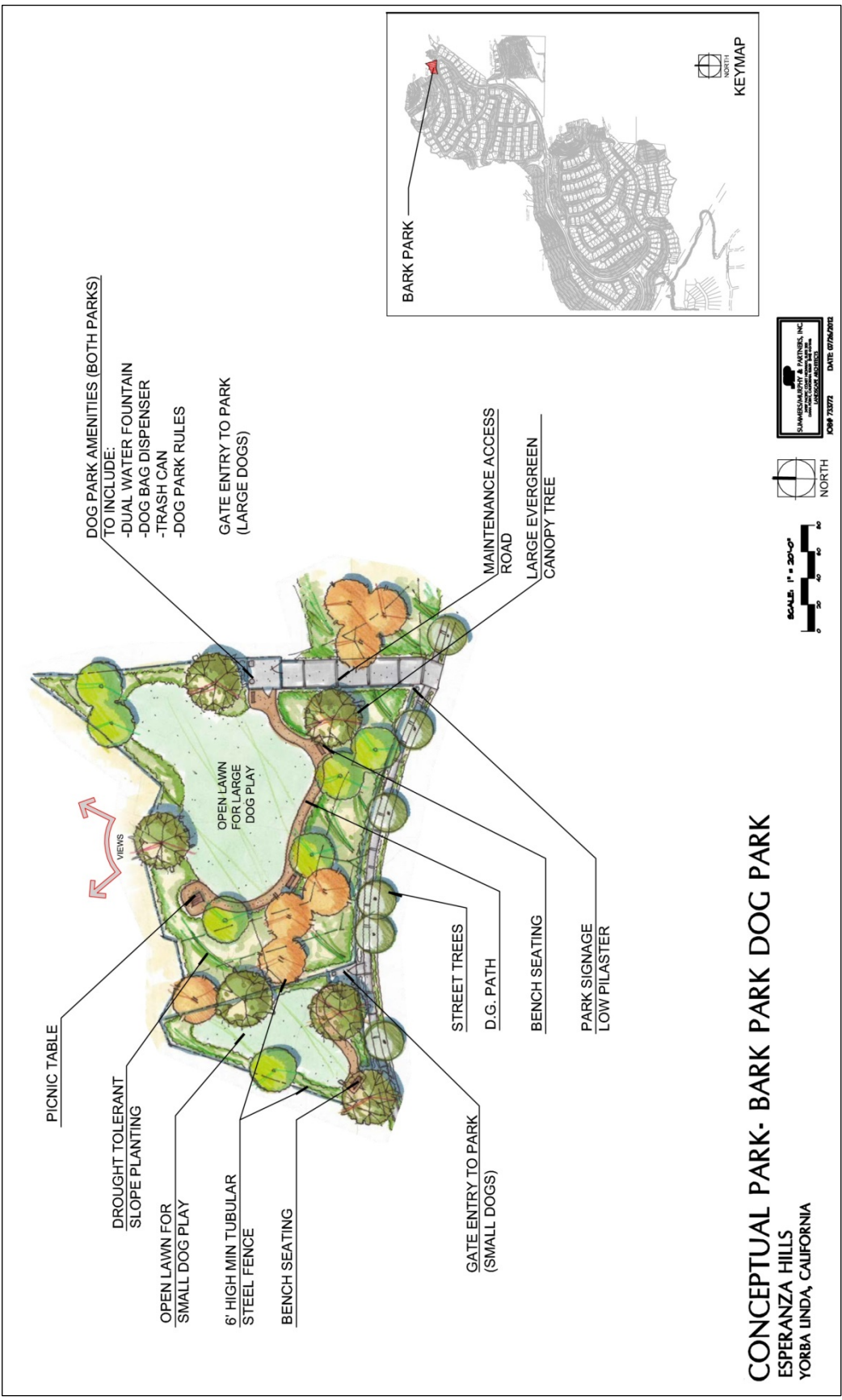


Exhibit 5-120 – Conceptual Park H, Bark Park Dog Park



Exhibit 5-121 – Conceptual Park J, WQMP Bio Retention Basin #1

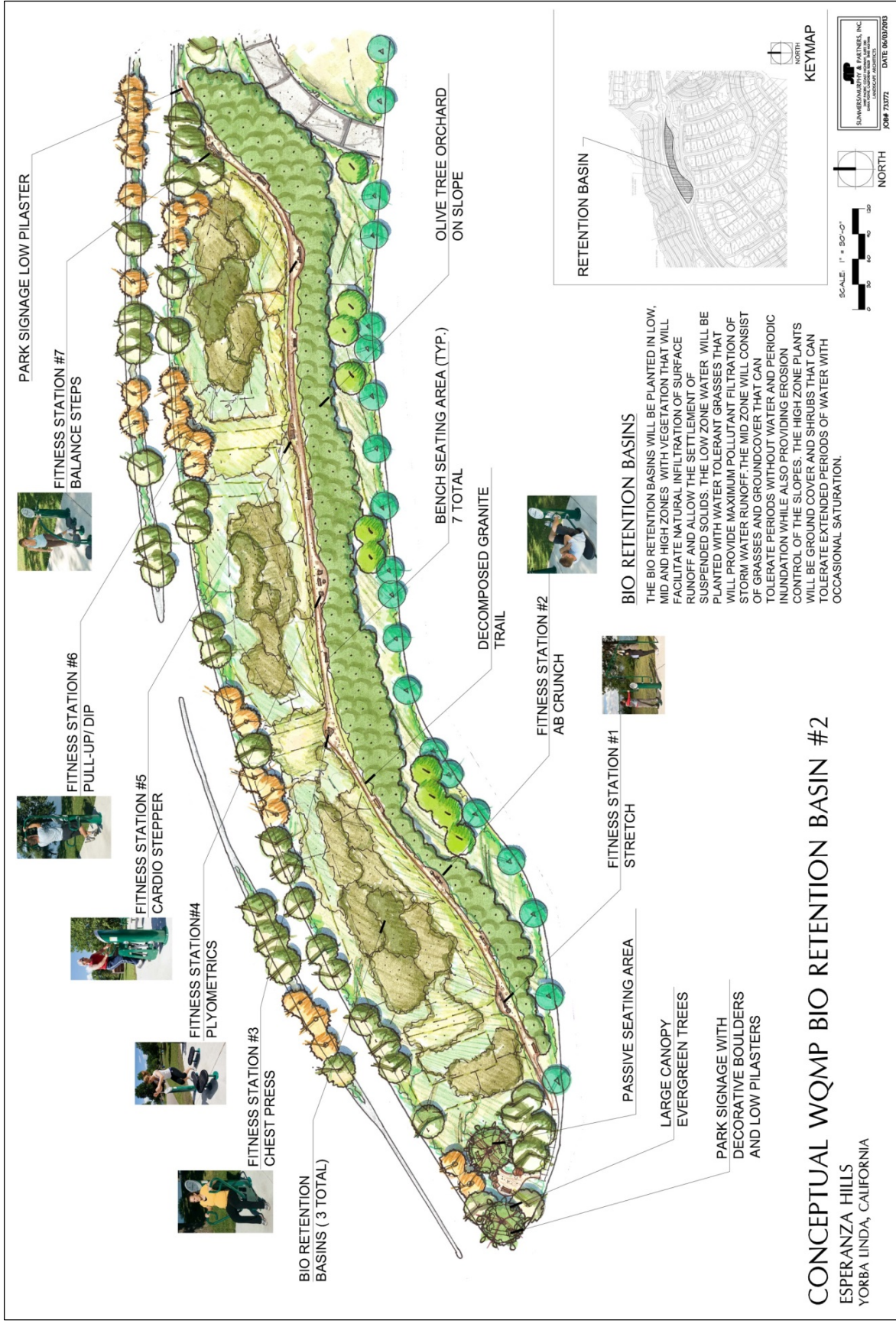


Exhibit 5-122 – Conceptual Park K, WQMP Bio Retention Basin #2

2. Trails

Currently, an equestrian trail system connects to an existing equestrian trail located just north of Aspen Way and extends north to Chino Hills State Park through Canyon B, consistent with the Yorba Linda GP for riding, hiking, and bikeway trails. Multi-use trails connect to the south and west, and transverse the property out to Chino Hills State Park. These connections would require easements through the adjoining Cielo Vista property.

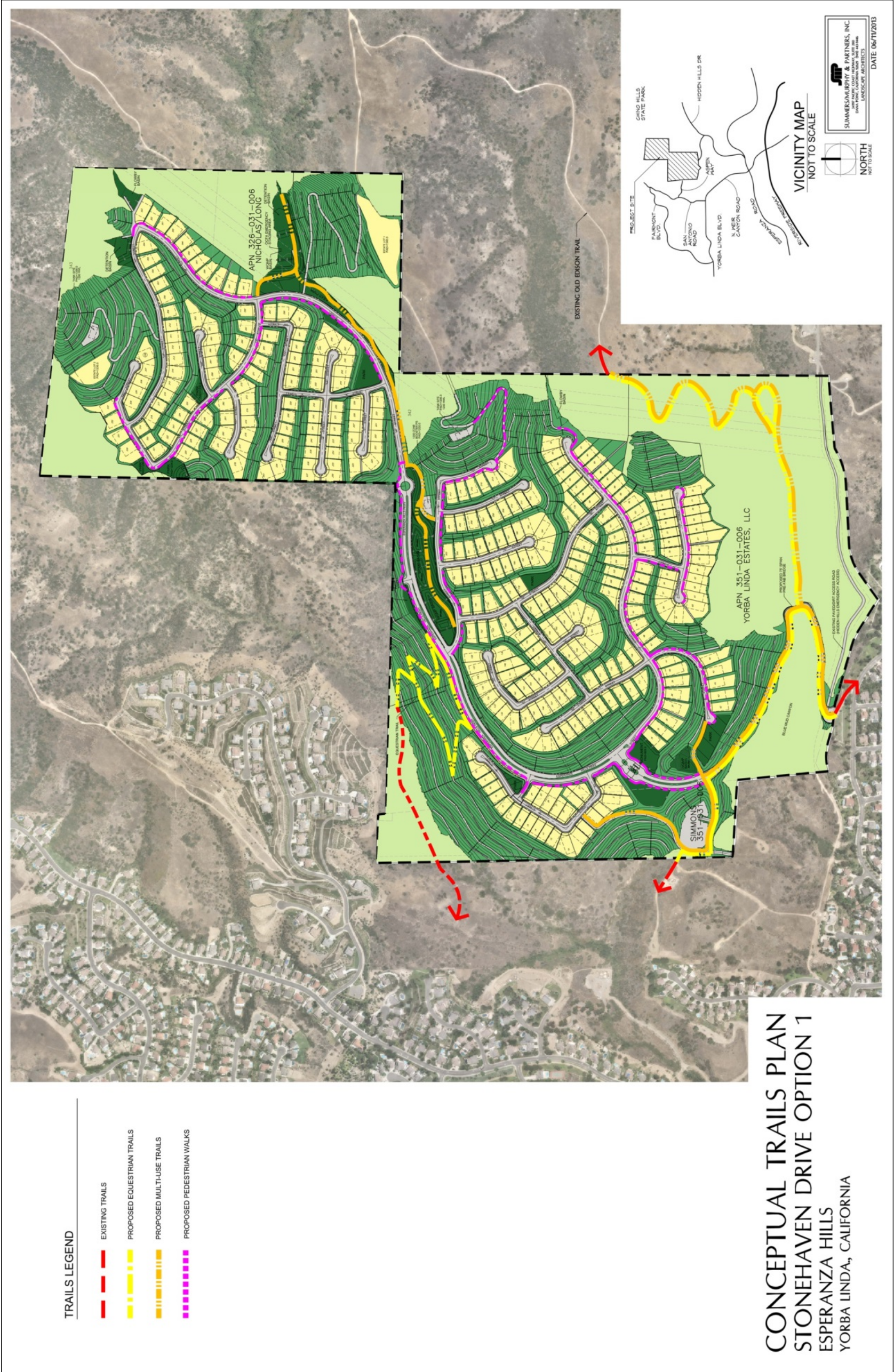
Three distinct trail systems totaling approximately seven miles are designed within the Proposed Project. In addition to the trails system designed throughout the development a trail that provides for hiking, equestrian, and bicycling access on the north side of the drainage area in Blue Mud Canyon will be constructed surrounded by a California-friendly plant palette providing year-round color and increased fire resistance that will lead to the Old Edison Trail in Chino Hills State Park. The trail connection extends to the Project boundary. State Parks has the authority to formalize the connection to the Old Edison Trail in Chino Hills State Park. Under Option 1, trail connections would be provided from Stonehaven Drive. It is anticipated that a park area will also be constructed in the land owned by the City. This potential off-site park is not included in the park calculations set forth above.

Corridors through the neighborhoods provide residents with pedestrian-only access to existing formal trails along Blue Mud Canyon and Canyon B. The trail system is designed to facilitate public access to parks and open space resources within the Project Area and as required by the California Department of Parks and Recreation for trail management, to the Old Edison Trail in order to provide access to the larger wildland areas within Chino Hills State Park. The trails are depicted on Exhibit 5-123 – Conceptual Trails Plan, Option 1 – Stonehaven Drive and Exhibit 5-124 – Conceptual Trails Plan, Option 2 – Aspen Way.

The table below depicts the length of each type of trail for each option.

Table 5-13-3 Trail Type/Linear Footage

Trail Type	Linear Feet		
	Option 1	Option 2	Option 2A
Multi-use trails - 8-foot-wide decomposed granite	6,136	5,851	5,851
Equestrian trails - 10-foot-wide decomposed granite	11,588	15,248	19,786
In-tract pedestrian walks - 5-foot-wide concrete	18,132	18,012	17,568
Total Trails	35,856	39,111	43,205



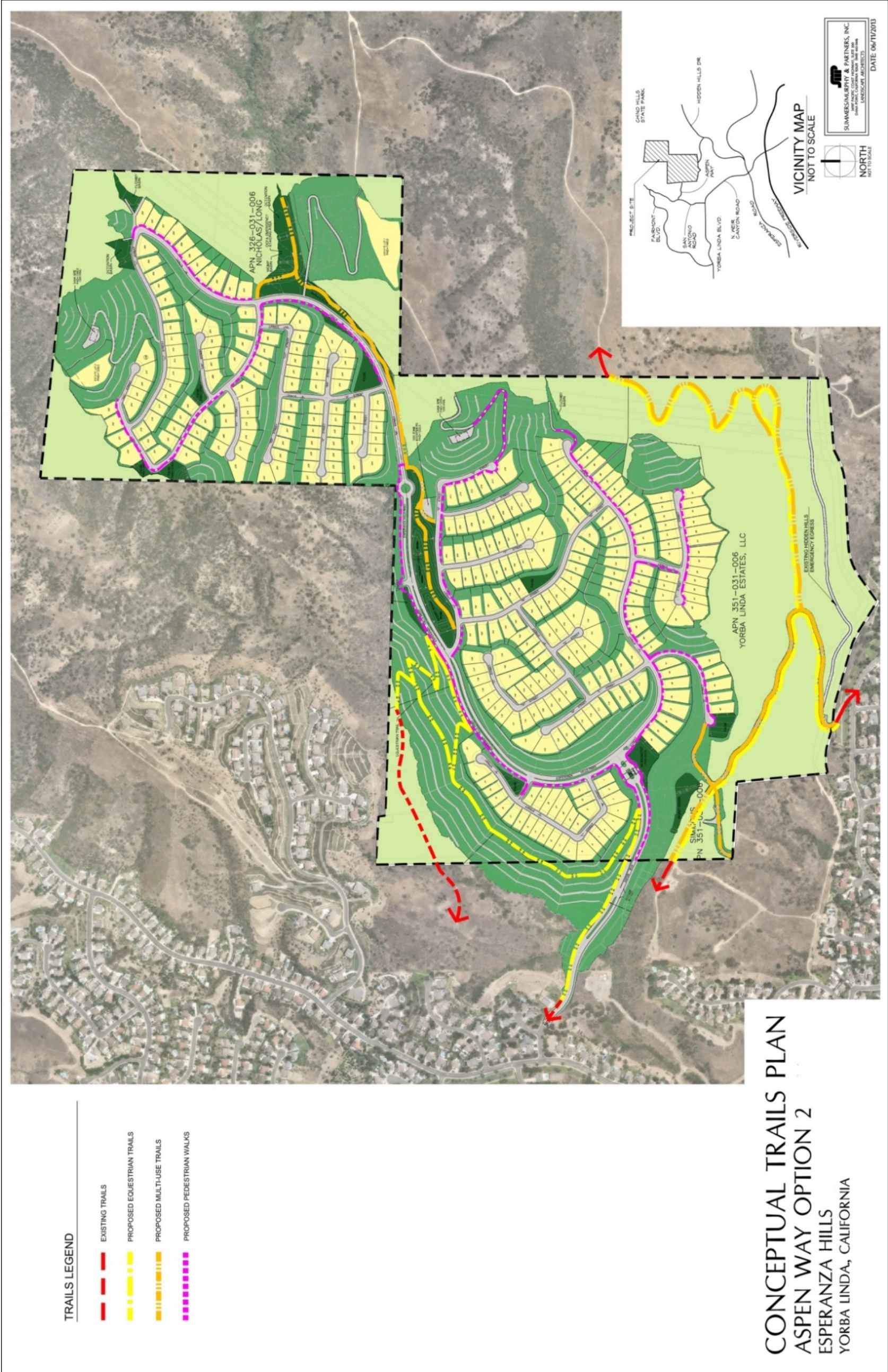


Exhibit 5-124 – Conceptual Trails Plan, Option 2 – Aspen Way

3. Open Space

The Project Site contains a total area of approximately 468.9 acres including natural open space, landscaped areas/parks, fire breaks, and fuel modification zones (FMZs).

- Natural Open Space – An area of 140.0 acres to 151.3 acres of Natural Open Space. consisting primarily of existing canyons with intermittent water flow, ridgelines, and other undisturbed natural space.
- Landscaped Areas - Additional Open Space of 126.6 acres to 135.8 acres will be created consisting of landscaped and irrigated slopes, with an additional 13.6 acres to 12.18 acres of landscaped parks and detention basins. Due to the project location within a Very High Fire Hazard Severity Zone (VHFHSZ), the existing plant palette will be modified to promote regeneration of historic native habitat such as black walnut trees, provide habitat for the Least Bell's Vireo, an endangered bird, together with other native vegetation that is more fire resistant.
- Fuel Modification - FMZs will be required adjacent to residential development and will act as additional open space. The Proposed Project will retain approximately 230.8 acres of Open Space, including 146.9 acres of natural open space and 83.9 acres of landscaping as part of the fuel modification plan. The developed areas will be surrounded by 170-foot FMZs based on a Fuel Modification/Fire Protection Plan developed in consultation with the Orange County Fire Authority (OCFA). Fuel modification is discussed further in Section 5.7, Hazards and Hazardous Materials (beginning on page 5-275). Exhibit 4-9 – Conceptual Site Plan, Option 1 - Stonehaven Drive (page 4-13) and Exhibit 4-10– Conceptual Site Plan, Option 2 - Aspen Way (page 4-15 depict the areas to be retained as natural open space.

5.13.5 Mitigation Measures

The Proposed Project exceeds the minimum requirements for County and City standards for parkland dedication in new residential areas, providing park acreage in excess of the amount required. The provision of equestrian and pedestrian trails, with linkages to existing trails, where feasible, provides a benefit for the residents of Esperanza Hills and the adjacent existing and planned communities. Open space will preserve natural ridgelines, habitats, and views to the extent possible, providing continuing recreational opportunities and enjoyment for residents.

While there are no playing fields for organized sports, the parks provide active play lots with play structures for children, and large open areas for small group activities such as volleyball and badminton.

With the availability of recreational opportunities on-site, use of similar existing off-site facilities will be minimized. The Proposed Project provides play lots (for children 2-12 years of age), fitness stations, BBQ and picnic areas, and open play lawn areas in

addition to multi-use paths and pedestrian/equestrian trails through open space. No environmental impacts will occur due to the low-profile development of the parks and trails, which are designed to protect water quality and enhance the vegetation palette using native trees, grasses, and fruit trees. As no significant impacts to recreation will occur, no mitigation measures are required.

5.13.6 Level of Significance after Mitigation

The Proposed Project could minimally increase the use of existing neighborhood or regional parks, but would not result in substantial physical deterioration of those facilities. No construction or expansion of existing facilities will be required. The Proposed Project provides in excess of parkland required by the County and the City. Therefore, no significant unavoidable impacts to recreation are associated with the project.

5.13.7 Cumulative Impacts

The project has been designed to provide recreation opportunities within the Esperanza Hills community, resulting in a positive impact to other local recreation areas and facilities, thereby minimizing use by its residents, which could result in physical deterioration of such facilities. Chino Hills State Park, Carbon Canyon Regional Park, Yorba Regional Park, Craig Regional Park, and Featherly Park all provide trails and natural wilderness areas similar to those proposed for the Proposed Project. The addition of the Proposed Project (1,088 projected population) and the proposed Cielo Vista project (358 projected population) will result in an increase of approximately 1,446 residents. However, as noted in Section 5.13.1, Existing Conditions (beginning on page 5-511), the area supports a significant number of County, regional, and City parks for residents and visitors. While there will be an increased demand on existing facilities, it is not anticipated that impacts due to proposed new development will have a significant cumulative impact due to the availability of regional parks, local parks, and recreation facilities, because parks are provided on-site at approximately three times the amount required by the City and people are largely anticipated to recreate on-site.

5.13.8 Unavoidable Adverse Impacts

There are no unavoidable adverse impacts related to recreation associated with the Proposed Project.